

## Product datasheet for **TA369308**

### Semaphorin 4D (SEMA4D) Rabbit Polyclonal Antibody

#### Product data:

Product Type:	Primary Antibodies
Applications:	IHC
Recommended Dilution:	IHC: 25-100 Positive control: Human ovarian cancer Predicted cell location: Cytoplasm
Reactivity:	Human, Mouse
Host:	Rabbit
Isotype:	IgG
Clonality:	Polyclonal
Immunogen:	Fusion protein of human SEMA4D
Formulation:	pH7.4 PBS, 0.05% NaN3, 40% Glycerol
Concentration:	lot specific
Purification:	Antigen affinity purification
Conjugation:	Unconjugated
Storage:	Store at -20°C.
Stability:	1 year
Gene Name:	semaphorin 4D
Database Link:	<a href="#">Entrez Gene 10507 Human Q92854</a>

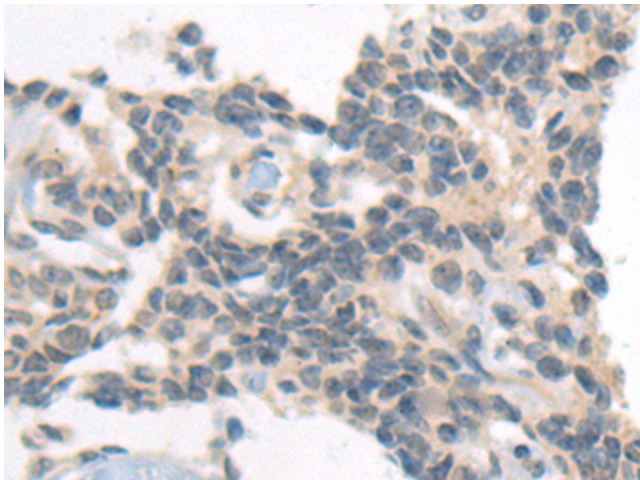
**Background:** Cell surface receptor for PLXN1B and PLXNB2 that plays an important role in cell-cell signaling. Promotes reorganization of the actin cytoskeleton and plays a role in axonal growth cone guidance in the developing central nervous system. Regulates dendrite and axon branching and morphogenesis. Promotes the migration of cerebellar granule cells and of endothelial cells. Plays a role in the immune system; induces B-cells to aggregate and improves their viability (in vitro). Promotes signaling via SRC and PTK2B/PYK2, which then mediates activation of phosphatidylinositol 3-kinase and of the AKT1 signaling cascade. Interaction with PLXNB1 mediates activation of RHOA.



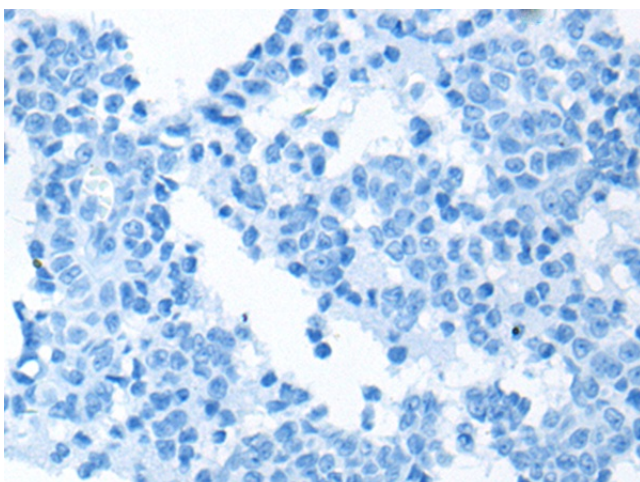
[View online »](#)

**Synonyms:**

A8; BB18; C9orf164; CD100; coll-4; FLJ33485; FLJ34282; FLJ39737; FLJ46484; GR3; M-sema-G; MGC169138; MGC169141; OTTHUMP00000021622; OTTHUMP00000208950; OTTHUMP00000208951; OTTHUMP00000208957; SEMAJ

**Product images:**

Immunohistochemistry of paraffin-embedded Human ovarian cancer tissue using TA369308 (SEMA4D Antibody) at dilution 1/40 (Original magnification: ×200)



Immunohistochemistry of paraffin-embedded Human ovarian cancer tissue using TA369308 (SEMA4D Antibody) at dilution 1/40, treated with fusion protein. (Original magnification: ×200)