

Product datasheet for **TA369306S**

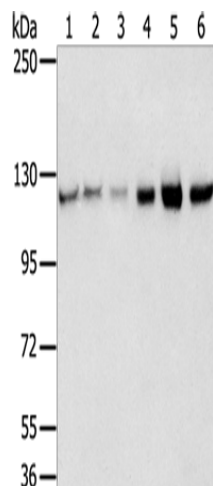
RBM5 Rabbit Polyclonal Antibody

Product data:

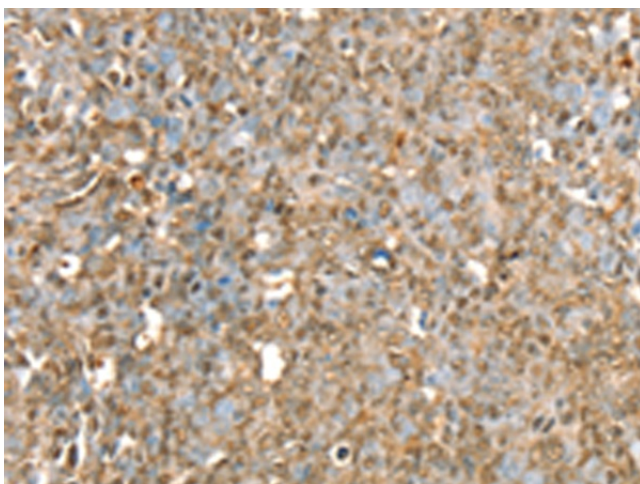
Product Type:	Primary Antibodies
Applications:	IHC, WB
Recommended Dilution:	WB: 500-2000 WB positive control: 823, A549, K562, 293T, hepg2 and huvec cells IHC: 25-100 Positive control: Human ovarian cancer Predicted cell location: Nucleus and Cytoplasm
Reactivity:	Human, Mouse, Rat
Host:	Rabbit
Isotype:	IgG
Clonality:	Polyclonal
Immunogen:	Fusion protein of human RBM5
Formulation:	pH7.4 PBS, 0.05% NaN ₃ , 40% Glycerol
Purification:	Antigen affinity purification
Conjugation:	Unconjugated
Storage:	Store at -20°C.
Stability:	1 year
Predicted Protein Size:	92 kDa
Gene Name:	RNA binding motif protein 5
Database Link:	Entrez Gene 10181 Human P52756
Background:	This gene is a candidate tumor suppressor gene which encodes a nuclear RNA binding protein that is a component of the spliceosome A complex. The encoded protein plays a role in the induction of cell cycle arrest and apoptosis through pre-mRNA splicing of multiple target genes including the tumor suppressor protein p53. This gene is located within the tumor suppressor region 3p21.3, and may play a role in the inhibition of tumor transformation and progression of several malignancies including lung cancer.
Synonyms:	FLJ39876; G15; H37; LUCA15; RMB5



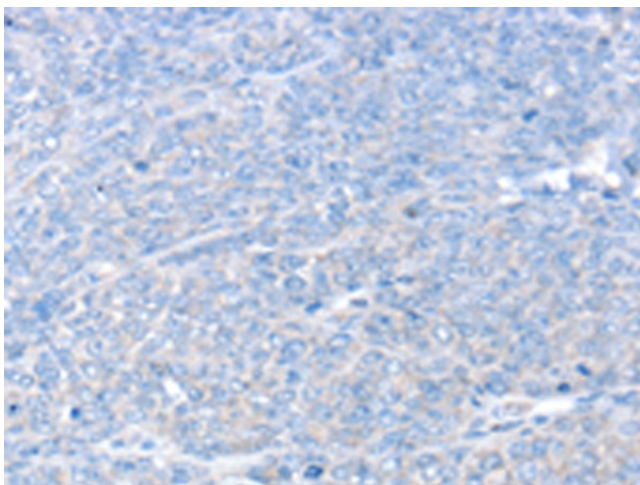
[View online »](#)

Product images:

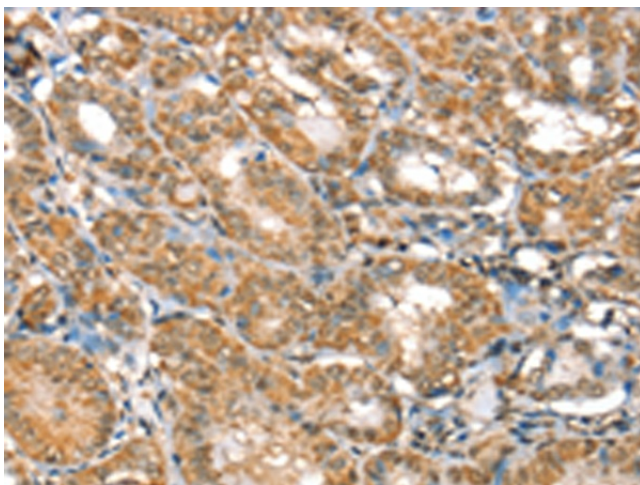
Gel: 6%SDS-PAGE
Lysate: 40 μ g
Lane 1-6: 823 cells
A549 cells
K562 cells
293T cells
hepg2 cells
huvec cells
Primary antibody: [TA369306] (RBM5 Antibody) at dilution 1/450
Secondary antibody: Goat anti rabbit IgG at 1/8000 dilution
Exposure time: 10 seconds



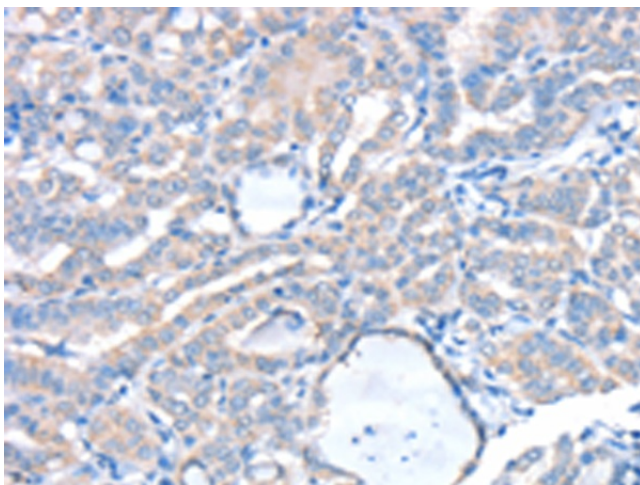
Immunohistochemistry of paraffin-embedded Human ovarian cancer tissue using [TA369306] (RBM5 Antibody) at dilution 1/30 (Original magnification: $\times 200$)



Immunohistochemistry of paraffin-embedded Human ovarian cancer tissue using [TA369306] (RBM5 Antibody) at dilution 1/30, treated with fusion protein. (Original magnification: $\times 200$)



Immunohistochemistry of paraffin-embedded Human thyroid cancer tissue using [TA369306] (RBM5 Antibody) at dilution 1/30 (Original magnification: $\times 200$)



Immunohistochemistry of paraffin-embedded Human thyroid cancer tissue using [TA369306] (RBM5 Antibody) at dilution 1/30, treated with fusion protein. (Original magnification: $\times 200$)