

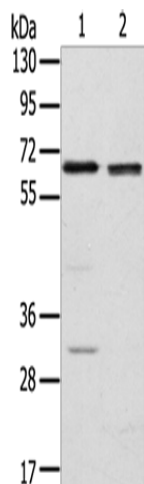
Product datasheet for **TA369305**

RBBP5 Rabbit Polyclonal Antibody

Product data:

Product Type:	Primary Antibodies
Applications:	WB
Recommended Dilution:	WB: 200-1000 WB positive control: HT-29 and hela cells
Reactivity:	Human, Mouse
Host:	Rabbit
Isotype:	IgG
Clonality:	Polyclonal
Immunogen:	Fusion protein of human RBBP5
Formulation:	pH7.4 PBS, 0.05% NaN ₃ , 40% Glycerol
Concentration:	lot specific
Purification:	Antigen affinity purification
Conjugation:	Unconjugated
Storage:	Store at -20°C.
Stability:	1 year
Predicted Protein Size:	59 kDa
Gene Name:	RB binding protein 5, histone lysine methyltransferase complex subunit
Database Link:	Entrez Gene 5929 Human Q15291
Background:	This gene encodes a ubiquitously expressed nuclear protein which belongs to a highly conserved subfamily of WD-repeat proteins. The encoded protein binds directly to retinoblastoma protein, which regulates cell proliferation. It interacts preferentially with the underphosphorylated retinoblastoma protein via the E1A-binding pocket B. Three alternatively spliced transcript variants that encode different protein isoforms have been described for this gene.
Synonyms:	RBBP-5; RBQ3; SWD1

[View online »](#)

Product images:


Gel: 8%SDS-PAGE

Lysate: 60 µg

Lane 1-2: HT29 cells
hela cells

Primary antibody: TA369305 (RBBP5 Antibody) at
dilution 1/200

Secondary antibody: Goat anti rabbit IgG at
1/8000 dilution

Exposure time: 10 seconds