

Product datasheet for **TA369303S**

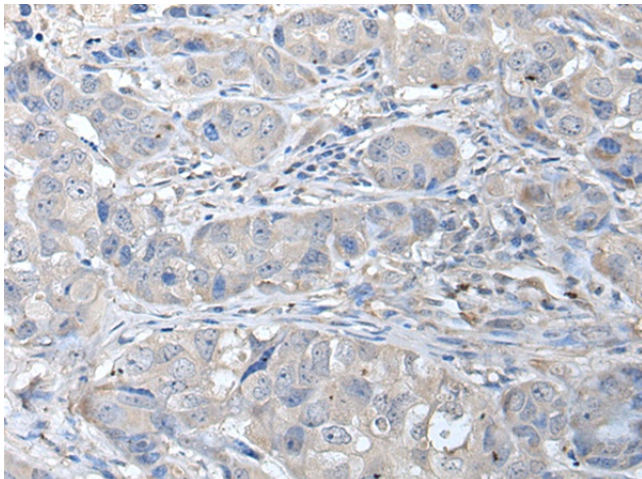
RASSF8 Rabbit Polyclonal Antibody

Product data:

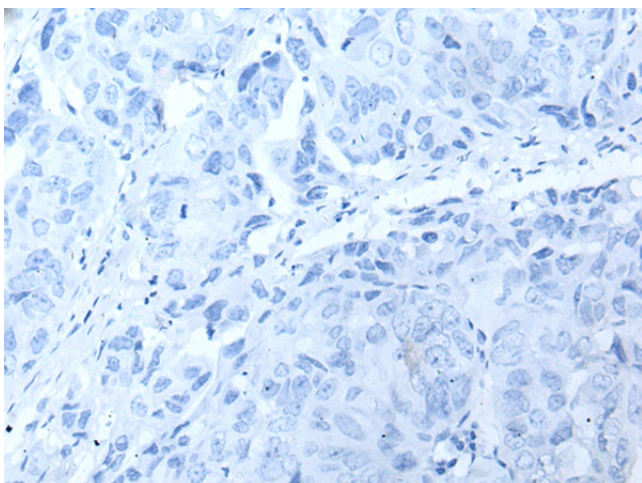
| | |
|-----------------------|--|
| Product Type: | Primary Antibodies |
| Applications: | IHC |
| Recommended Dilution: | IHC: 30-150 Positive control: Human breast cancer Predicted cell location: Cytoplasm and Cell membrane |
| Reactivity: | Human, Mouse |
| Host: | Rabbit |
| Isotype: | IgG |
| Clonality: | Polyclonal |
| Immunogen: | Fusion protein of human RASSF8 |
| Formulation: | pH7.4 PBS, 0.05% NaN ₃ , 40% Glycerol |
| Purification: | Antigen affinity purification |
| Conjugation: | Unconjugated |
| Storage: | Store at -20°C. |
| Stability: | 1 year |
| Gene Name: | Ras association domain family member 8 |
| Database Link: | Entrez Gene 11228 Human Q8NHQ8 |
| Background: | This gene encodes a member of the Ras-association domain family (RASSF) of tumor suppressor proteins. This gene is essential for maintaining adherens junction function in epithelial cells and has a role in epithelial cell migration. It is a lung tumor suppressor gene candidate. A chromosomal translocation t(12;22)(p11.2;q13.3) leading to the fusion of this gene and the FBLN1 gene is found in a complex type of synpolydactyly. Multiple alternatively spliced transcript variants encoding different isoforms have been found for this gene. |
| Synonyms: | C12orf2; DKFZp434O0227; FLJ11542; HoJ-1; HOJ1 |



[View online »](#)

Product images:

Immunohistochemistry of paraffin-embedded Human breast cancer tissue using [TA369303] (RASSF8 Antibody) at dilution 1/35 (Original magnification: ×200)



Immunohistochemistry of paraffin-embedded Human breast cancer tissue using [TA369303] (RASSF8 Antibody) at dilution 1/35, treated with fusion protein. (Original magnification: ×200)