

## Product datasheet for **TA369289**

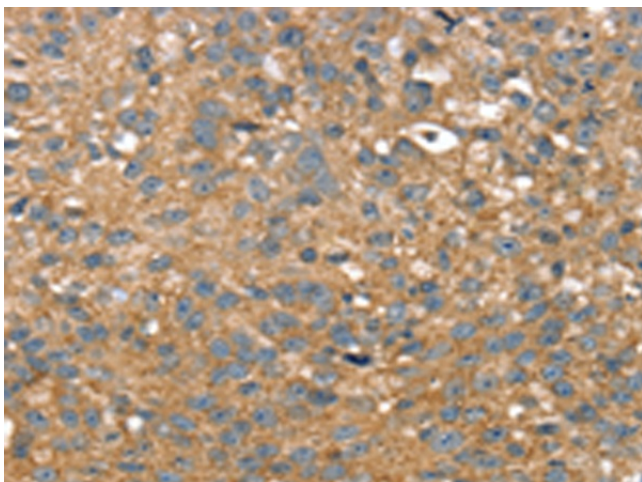
### PTK9 (TWF1) Rabbit Polyclonal Antibody

#### Product data:

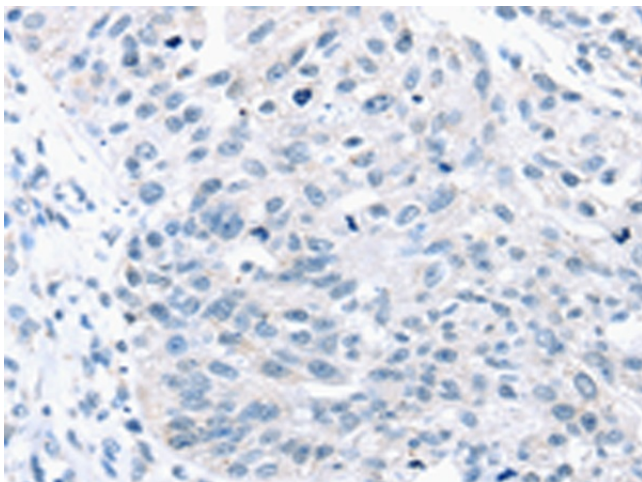
Product Type:	Primary Antibodies
Applications:	IHC
Recommended Dilution:	IHC: 25-100 Positive control: Human breast cancer Predicted cell location: Cytoplasm
Reactivity:	Human, Mouse, Rat
Host:	Rabbit
Isotype:	IgG
Clonality:	Polyclonal
Immunogen:	Fusion protein of human TWF1
Formulation:	pH7.4 PBS, 0.05% NaN <sub>3</sub> , 40% Glycerol
Concentration:	lot specific
Purification:	Antigen affinity purification
Conjugation:	Unconjugated
Storage:	Store at -20°C.
Stability:	1 year
Gene Name:	twinfilin actin binding protein 1
Database Link:	<a href="#">Entrez Gene 5756 Human Q12792</a>
Background:	This gene encodes twinfilin, an actin monomer-binding protein conserved from yeast to mammals. Studies of the mouse counterpart suggest that this protein may be an actin monomer-binding protein, and its localization to cortical G-actin-rich structures may be regulated by the small GTPase RAC1.
Synonyms:	A6; MGC23788; MGC41876; PTK9



[View online »](#)

**Product images:**

Immunohistochemistry of paraffin-embedded Human breast cancer tissue using TA369289 (TWF1 Antibody) at dilution 1/25 (Original magnification:  $\times 200$ )



Immunohistochemistry of paraffin-embedded Human breast cancer tissue using TA369289 (TWF1 Antibody) at dilution 1/25, treated with fusion protein. (Original magnification:  $\times 200$ )