

Product datasheet for **TA369278**

PMP2 Rabbit Polyclonal Antibody

Product data:

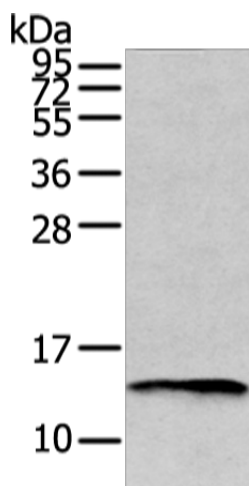
Product Type:	Primary Antibodies
Applications:	IHC, WB
Recommended Dilution:	WB: 500-2000 WB positive control: Mouse fat tissue IHC: 25-100 Positive control: Human esophagus cancer Predicted cell location: Cytoplasm
Reactivity:	Human, Mouse
Host:	Rabbit
Isotype:	IgG
Clonality:	Polyclonal
Immunogen:	Full length fusion protein
Formulation:	pH7.4 PBS, 0.05% NaN ₃ , 40% Glycerol
Concentration:	lot specific
Purification:	Antigen affinity purification
Conjugation:	Unconjugated
Storage:	Store at -20°C.
Stability:	1 year
Predicted Protein Size:	15 kDa
Gene Name:	peripheral myelin protein 2
Database Link:	Entrez Gene 5375 Human P02689

Background: Peripheral Myelin protein-2 (PMP2, Myelin P2, MP2), a small basic enzyme, is one of the principal proteins of peripheral Myelin and presumably participates in the transport of fatty acids or the metabolism of Myelin lipids. Myelin P2 is similar in amino acid sequence and tertiary structure to fatty acid binding proteins found in the liver, adipocytes and intestine, although its expression is restricted to the nervous system.

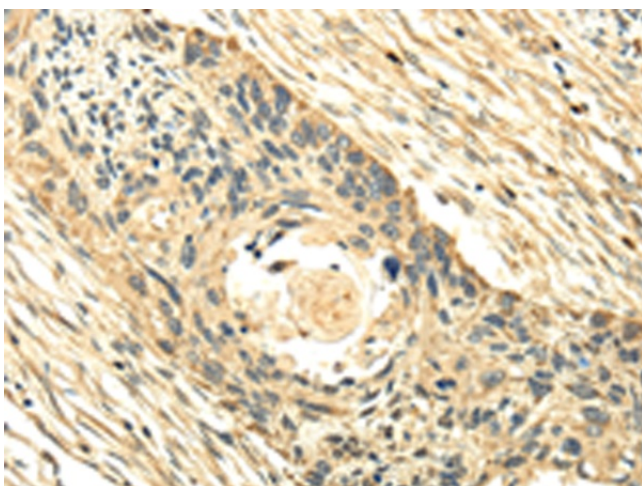
Synonyms: FABP8; M-FABP; MP2; P2



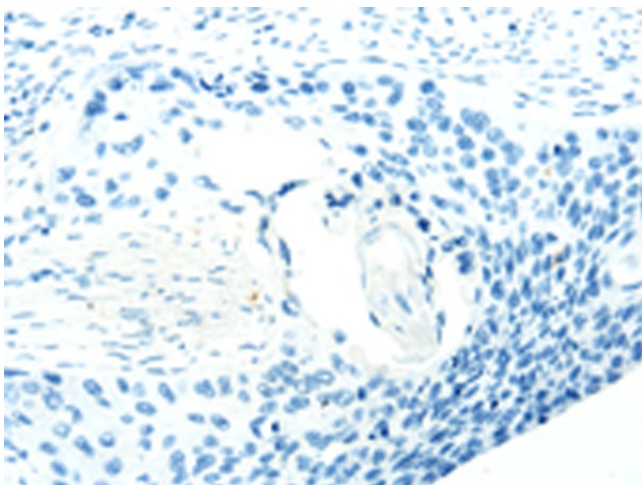
[View online »](#)

Product images:

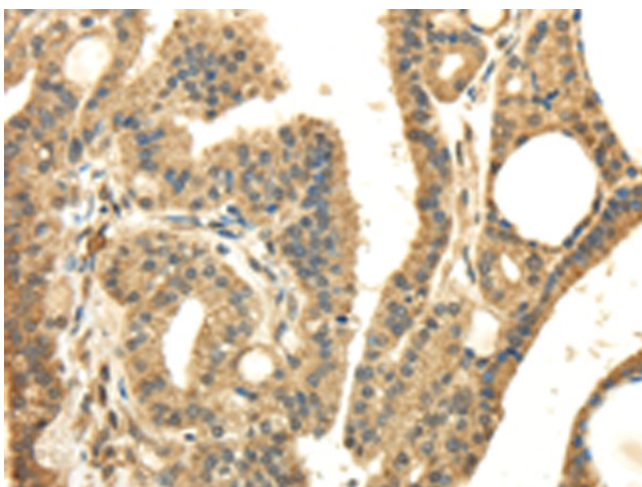
Gel: 12%SDS-PAGE
Lysate: 40 µg
Lane: Mouse fat tissue
Primary antibody: TA369278 (PMP2 Antibody) at dilution 1/400
Secondary antibody: Goat anti rabbit IgG at 1/8000 dilution
Exposure time: 80 seconds



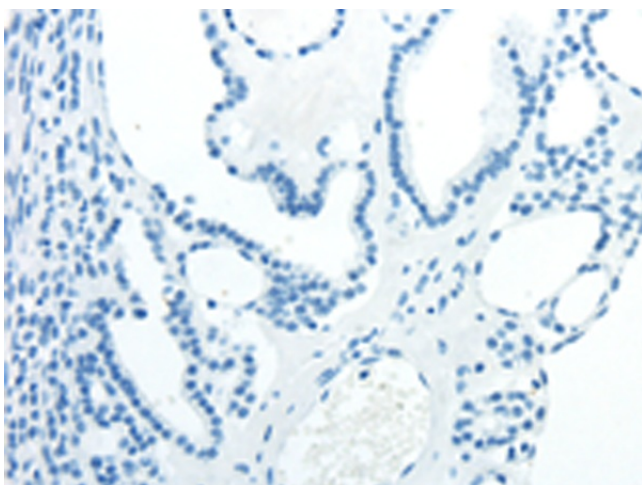
Immunohistochemistry of paraffin-embedded Human esophagus cancer tissue using TA369278 (PMP2 Antibody) at dilution 1/25 (Original magnification: ×200)



Immunohistochemistry of paraffin-embedded Human esophagus cancer tissue using TA369278 (PMP2 Antibody) at dilution 1/25, treated with fusion protein. (Original magnification: $\times 200$)



Immunohistochemistry of paraffin-embedded Human thyroid cancer tissue using TA369278 (PMP2 Antibody) at dilution 1/25 (Original magnification: $\times 200$)



Immunohistochemistry of paraffin-embedded Human thyroid cancer tissue using TA369278 (PMP2 Antibody) at dilution 1/25, treated with fusion protein. (Original magnification: $\times 200$)