

Product datasheet for **TA369277S**

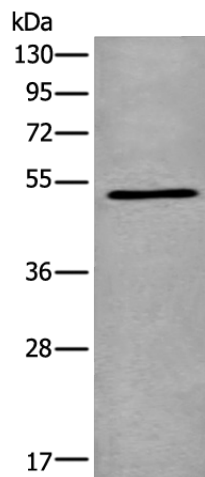
PNLIPRP1 Rabbit Polyclonal Antibody

Product data:

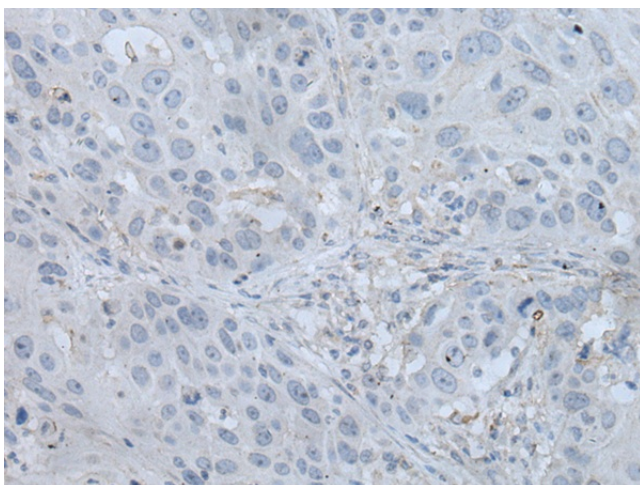
| | |
|-------------------------|---|
| Product Type: | Primary Antibodies |
| Applications: | IHC, WB |
| Recommended Dilution: | WB: 200-1000 WB positive control: Mouse Pancreas tissue lysate IHC: 25-100 Positive control: Human esophagus cancer Predicted cell location: Secreted |
| Reactivity: | Human, Mouse, Rat |
| Host: | Rabbit |
| Isotype: | IgG |
| Clonality: | Polyclonal |
| Immunogen: | Fusion protein of human PNLIPRP1 |
| Formulation: | pH7.4 PBS, 0.05% NaN ₃ , 40% Glycerol |
| Purification: | Antigen affinity purification |
| Conjugation: | Unconjugated |
| Storage: | Store at -20°C. |
| Stability: | 1 year |
| Predicted Protein Size: | 52 kDa |
| Gene Name: | pancreatic lipase related protein 1 |
| Database Link: | Entrez Gene 5407 Human P54315 |
| Background: | May function as inhibitor of dietary triglyceride digestion. Lacks detectable lipase activity towards triglycerides, diglycerides, phosphatidylcholine, galactolipids or cholesterol esters (in vitro) (By similarity). |
| Synonyms: | PL-RP1; PLRP1 |



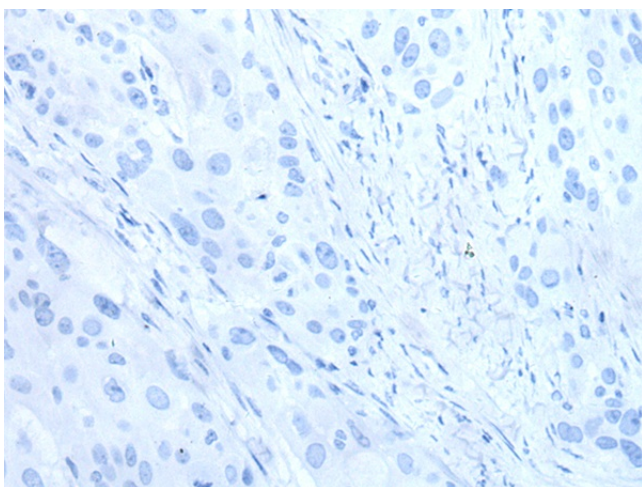
[View online »](#)

Product images:

Gel: 8%SDS-PAGE
Lysate: 40 μ g
Lane: Mouse Pancreas tissue lysate
Primary antibody: [TA369277] (PNLIPRP1 Antibody) at dilution 1/300
Secondary antibody: Goat anti rabbit IgG at 1/8000 dilution
Exposure time: 10 seconds



Immunohistochemistry of paraffin-embedded Human esophagus cancer tissue using [TA369277] (PNLIPRP1 Antibody) at dilution 1/35 (Original magnification: \times 200)



Immunohistochemistry of paraffin-embedded Human esophagus cancer tissue using [TA369277] (PNLIPRP1 Antibody) at dilution 1/35, treated with fusion protein. (Original magnification: ×200)