

## Product datasheet for **TA369277**

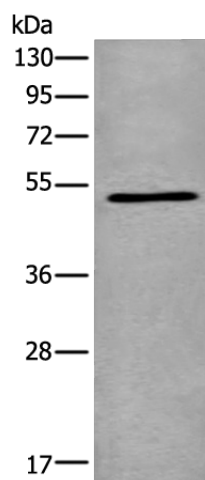
### PNLIPRP1 Rabbit Polyclonal Antibody

#### Product data:

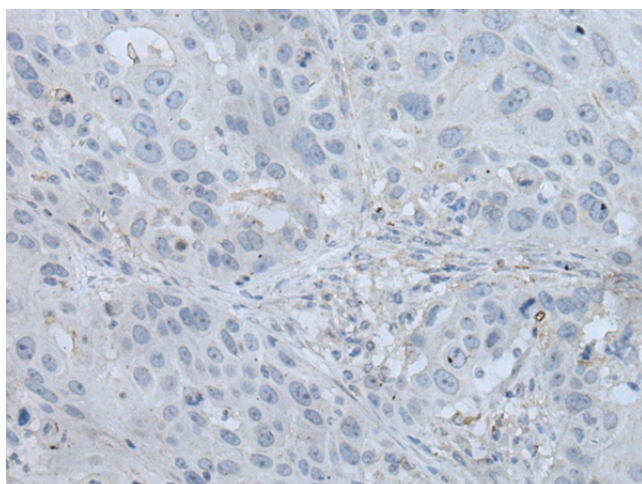
Product Type:	Primary Antibodies
Applications:	IHC, WB
Recommended Dilution:	WB: 200-1000 WB positive control: Mouse Pancreas tissue lysate IHC: 25-100 Positive control: Human esophagus cancer Predicted cell location: Secreted
Reactivity:	Human, Mouse, Rat
Host:	Rabbit
Isotype:	IgG
Clonality:	Polyclonal
Immunogen:	Fusion protein of human PNLIPRP1
Formulation:	pH7.4 PBS, 0.05% NaN <sub>3</sub> , 40% Glycerol
Concentration:	lot specific
Purification:	Antigen affinity purification
Conjugation:	Unconjugated
Storage:	Store at -20°C.
Stability:	1 year
Predicted Protein Size:	52 kDa
Gene Name:	pancreatic lipase related protein 1
Database Link:	<a href="#">Entrez Gene 5407 Human P54315</a>
Background:	May function as inhibitor of dietary triglyceride digestion. Lacks detectable lipase activity towards triglycerides, diglycerides, phosphatidylcholine, galactolipids or cholesterol esters (in vitro) (By similarity).
Synonyms:	PL-RP1; PLRP1



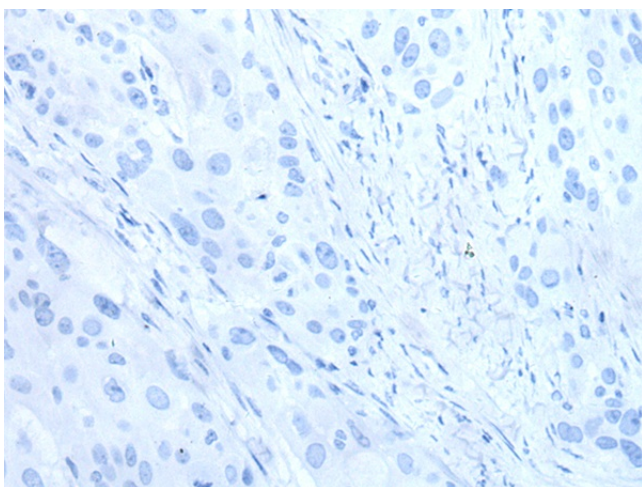
[View online »](#)

**Product images:**

Gel: 8%SDS-PAGE  
Lysate: 40  $\mu$ g  
Lane: Mouse Pancreas tissue lysate  
Primary antibody: TA369277 (PNLIPRP1 Antibody) at dilution 1/300  
Secondary antibody: Goat anti rabbit IgG at 1/8000 dilution  
Exposure time: 10 seconds



Immunohistochemistry of paraffin-embedded Human esophagus cancer tissue using TA369277 (PNLIPRP1 Antibody) at dilution 1/35 (Original magnification:  $\times$ 200)



Immunohistochemistry of paraffin-embedded Human esophagus cancer tissue using TA369277 (PNLIPRP1 Antibody) at dilution 1/35, treated with fusion protein. (Original magnification:  $\times 200$ )