

Product datasheet for **TA369269S**

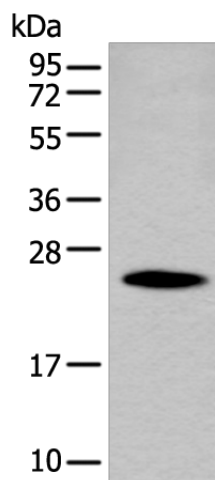
PGRMC1 Rabbit Polyclonal Antibody

Product data:

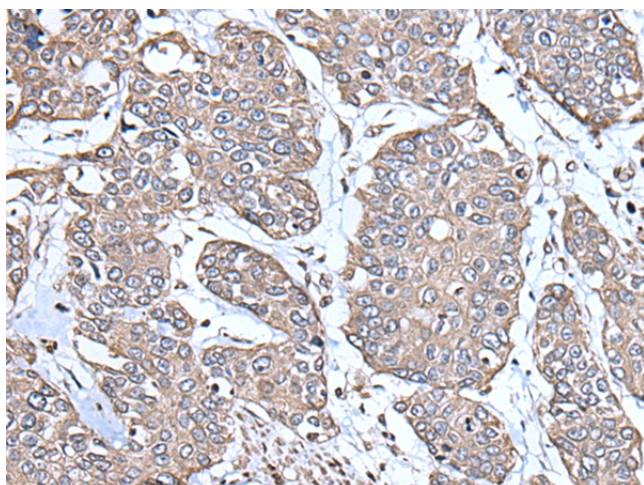
Product Type:	Primary Antibodies
Applications:	IHC, WB
Recommended Dilution:	WB: 200-1000 WB positive control: Human kidney tissue lysate IHC: 25-100 Positive control: Human prostate cancer Predicted cell location: Cytoplasm
Reactivity:	Human, Mouse, Rat
Host:	Rabbit
Isotype:	IgG
Clonality:	Polyclonal
Immunogen:	Fusion protein of human PGRMC1
Formulation:	pH7.4 PBS, 0.05% NaN ₃ , 40% Glycerol
Purification:	Antigen affinity purification
Conjugation:	Unconjugated
Storage:	Store at -20°C.
Stability:	1 year
Predicted Protein Size:	22 kDa
Gene Name:	progesterone receptor membrane component 1
Database Link:	Entrez Gene 10857 Human O00264
Background:	This gene encodes a putative membrane-associated progesterone steroid receptor. The protein is expressed predominantly in the liver and kidney.
Synonyms:	HPR6.6; MPR; PGRMC



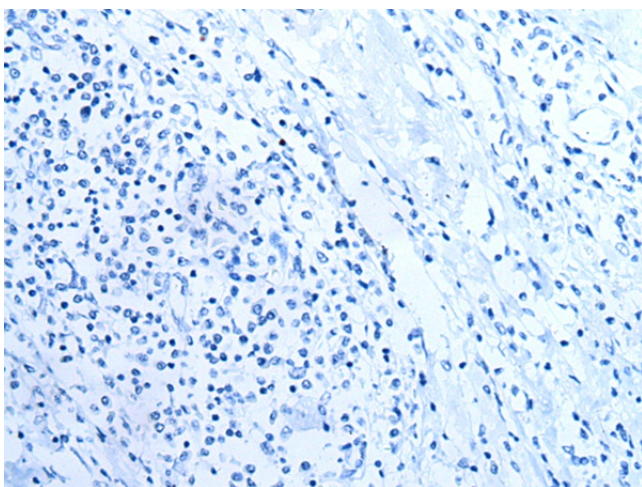
[View online »](#)

Product images:

Gel: 12%SDS-PAGE
Lysate: 40 µg
Lane: Human kidney tissue lysate
Primary antibody: [TA369269] (PGRMC1 Antibody) at dilution 1/250
Secondary antibody: Goat anti rabbit IgG at 1/8000 dilution
Exposure time: 60 seconds



Immunohistochemistry of paraffin-embedded Human prostate cancer tissue using [TA369269] (PGRMC1 Antibody) at dilution 1/30 (Original magnification: ×200)



Immunohistochemistry of paraffin-embedded Human prostate cancer tissue using [TA369269] (PGRMC1 Antibody) at dilution 1/30, treated with fusion protein. (Original magnification: $\times 200$)