

## Product datasheet for **TA369269**

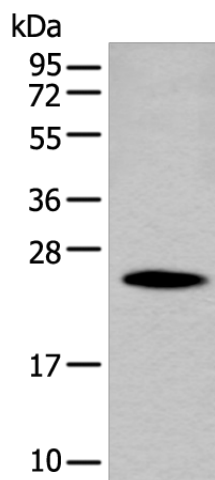
### **PGRMC1 Rabbit Polyclonal Antibody**

#### **Product data:**

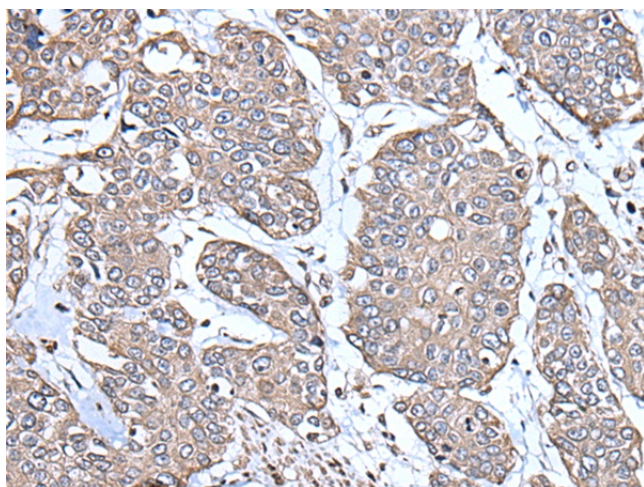
Product Type:	Primary Antibodies
Applications:	IHC, WB
Recommended Dilution:	WB: 200-1000 WB positive control: Human kidney tissue lysate IHC: 25-100 Positive control: Human prostate cancer Predicted cell location: Cytoplasm
Reactivity:	Human, Mouse, Rat
Host:	Rabbit
Isotype:	IgG
Clonality:	Polyclonal
Immunogen:	Fusion protein of human PGRMC1
Formulation:	pH7.4 PBS, 0.05% NaN <sub>3</sub> , 40% Glycerol
Concentration:	lot specific
Purification:	Antigen affinity purification
Conjugation:	Unconjugated
Storage:	Store at -20°C.
Stability:	1 year
Predicted Protein Size:	22 kDa
Gene Name:	progesterone receptor membrane component 1
Database Link:	<a href="#">Entrez Gene 10857 Human</a> <a href="#">O00264</a>
Background:	This gene encodes a putative membrane-associated progesterone steroid receptor. The protein is expressed predominantly in the liver and kidney.
Synonyms:	HPR6.6; MPR; PGRMC



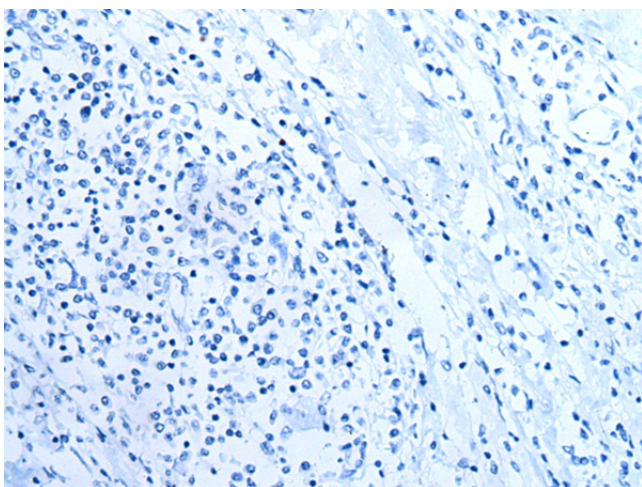
[View online »](#)

**Product images:**

Gel: 12%SDS-PAGE  
Lysate: 40  $\mu$ g  
Lane: Human kidney tissue lysate  
Primary antibody: TA369269 (PGRMC1 Antibody)  
at dilution 1/250  
Secondary antibody: Goat anti rabbit IgG at  
1/8000 dilution  
Exposure time: 60 seconds



Immunohistochemistry of paraffin-embedded  
Human prostate cancer tissue using TA369269  
(PGRMC1 Antibody) at dilution 1/30 (Original  
magnification:  $\times$ 200)



Immunohistochemistry of paraffin-embedded Human prostate cancer tissue using TA369269 (PGRMC1 Antibody) at dilution 1/30, treated with fusion protein. (Original magnification:  $\times 200$ )