

Product datasheet for **TA369262**

PDLIM1 Rabbit Polyclonal Antibody

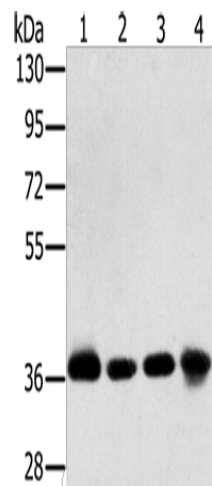
Product data:

Product Type:	Primary Antibodies
Applications:	WB
Recommended Dilution:	WB: 1000-5000 WB positive control: Huvec and 293T cells, hepg2 cells and mouse liver tissue
Reactivity:	Human, Mouse, Rat
Host:	Rabbit
Isotype:	IgG
Clonality:	Polyclonal
Immunogen:	Fusion protein of human PDLIM1
Formulation:	pH7.4 PBS, 0.05% NaN ₃ , 40% Glycerol
Concentration:	lot specific
Purification:	Antigen affinity purification
Conjugation:	Unconjugated
Storage:	Store at -20°C.
Stability:	1 year
Predicted Protein Size:	36 kDa
Gene Name:	PDZ and LIM domain 1
Database Link:	Entrez Gene 9124 Human O00151
Background:	This gene encodes a member of the enigma protein family. The protein contains two protein interacting domains, a PDZ domain at the amino terminal end and one to three LIM domains at the carboxyl terminal. It is a cytoplasmic protein associated with the cytoskeleton. The protein may function as an adapter to bring other LIM-interacting proteins to the cytoskeleton. Pseudogenes associated with this gene are located on chromosomes 3, 14 and 17.
Synonyms:	CLIM1; CLP-36; CLP36; elfin; enigma; hCLIM1



[View online »](#)

Product images:



Gel: 8%SDS-PAGE

Lysate: 40 μ g

Lane 1-4: Huvec cells

293T cells

hepg2 cells

mouse liver tissue

Primary antibody: TA369262 (PDLIM1 Antibody)
at dilution 1/600

Secondary antibody: Goat anti rabbit IgG at
1/8000 dilution

Exposure time: 10 seconds