

## Product datasheet for **TA369261**

### PDHB Rabbit Polyclonal Antibody

#### Product data:

Product Type:	Primary Antibodies
Applications:	IHC, WB
Recommended Dilution:	WB: 1000-5000 WB positive control: Rat heart tissue, Human heart tissue, HepG2 cell lysates IHC: 100-300 Positive control: Human ovarian cancer Predicted cell location: Cytoplasm
Reactivity:	Human, Mouse, Rat
Host:	Rabbit
Isotype:	IgG
Clonality:	Polyclonal
Immunogen:	Fusion protein of human PDHB
Formulation:	pH7.4 PBS, 0.05% NaN <sub>3</sub> , 40% Glycerol
Concentration:	lot specific
Purification:	Antigen affinity purification
Conjugation:	Unconjugated
Storage:	Store at -20°C.
Stability:	1 year
Predicted Protein Size:	39 kDa
Gene Name:	pyruvate dehydrogenase (lipoamide) beta
Database Link:	<a href="#">Entrez Gene 5162 Human P11177</a>



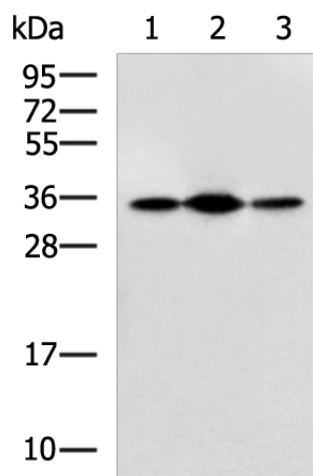
[View online »](#)

**Background:**

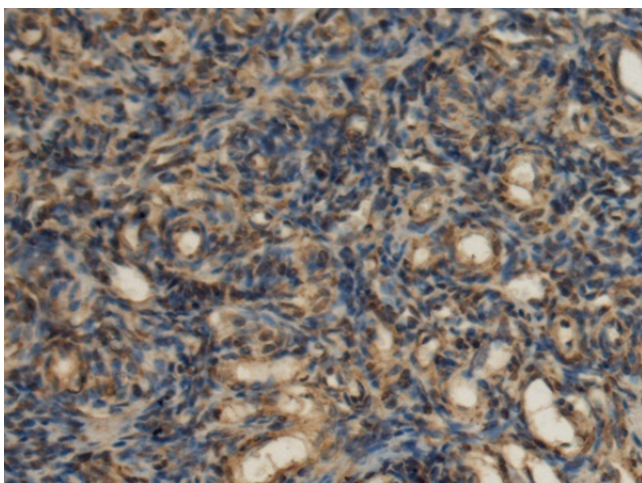
The pyruvate dehydrogenase (PDH) complex is a nuclear-encoded mitochondrial multienzyme complex that catalyzes the overall conversion of pyruvate to acetyl-CoA and carbon dioxide, and provides the primary link between glycolysis and the tricarboxylic acid (TCA) cycle. The PDH complex is composed of multiple copies of three enzymatic components: pyruvate dehydrogenase (E1), dihydrolipoamide acetyltransferase (E2) and lipoamide dehydrogenase (E3). The E1 enzyme is a heterotetramer of two alpha and two beta subunits. This gene encodes the E1 beta subunit. Mutations in this gene are associated with pyruvate dehydrogenase E1-beta deficiency. Alternatively spliced transcript variants have been found for this gene. [provided by RefSeq, Mar 2012]

**Synonyms:**

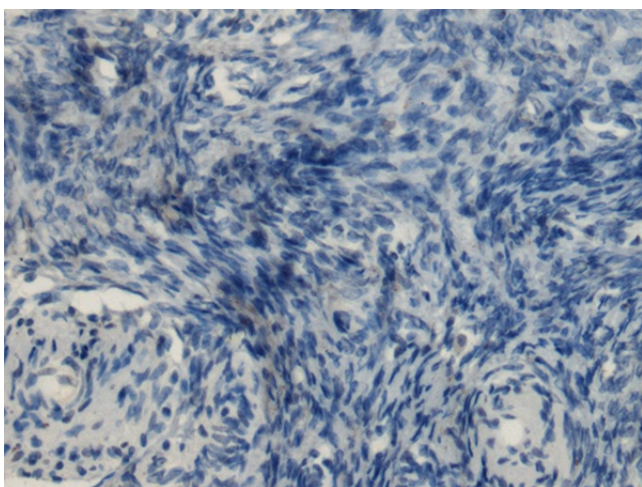
DKFZp564K0164; PDHE1-B; PHE1B

**Product images:**

Gel: 12%SDS-PAGE  
Lysate: 40 µg  
Lane 1-3: Rat heart tissue  
Human heart tissue  
HepG2 cell lysates  
Primary antibody: TA369261 (PDHB Antibody) at dilution 1/400  
Secondary antibody: Goat anti rabbit IgG at 1/5000 dilution  
Exposure time: 10 seconds



Immunohistochemistry of paraffin-embedded Human ovarian cancer tissue using TA369261 (PDHB Antibody) at dilution 1/120 (Original magnification: ×200)



Immunohistochemistry of paraffin-embedded Human ovarian cancer tissue using TA369261 (PDHB Antibody) at dilution 1/120, treated with fusion protein. (Original magnification: ×200)