

Product datasheet for **TA369260**

PDGFRL Rabbit Polyclonal Antibody

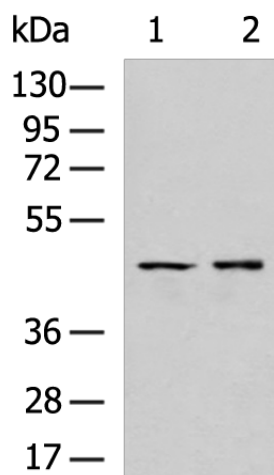
Product data:

Product Type:	Primary Antibodies
Applications:	IHC, WB
Recommended Dilution:	WB: 500-2000 WB positive control: HUVEC, HT29 cell lysates IHC: 100-300 Positive control: Human tonsil Predicted cell location: Secreted
Reactivity:	Human, Mouse, Rat
Host:	Rabbit
Isotype:	IgG
Clonality:	Polyclonal
Immunogen:	Fusion protein of human PDGFRL
Formulation:	pH7.4 PBS, 0.05% NaN ₃ , 40% Glycerol
Concentration:	lot specific
Purification:	Antigen affinity purification
Conjugation:	Unconjugated
Storage:	Store at -20°C.
Stability:	1 year
Predicted Protein Size:	42 kDa
Gene Name:	platelet derived growth factor receptor like
Database Link:	Entrez Gene 5157 Human Q15198
Background:	This gene encodes a protein with significant sequence similarity to the ligand binding domain of platelet-derived growth factor receptor beta. Mutations in this gene, or deletion of a chromosomal segment containing this gene, are associated with sporadic hepatocellular carcinomas, colorectal cancers, and non-small cell lung cancers. This suggests this gene product may function as a tumor suppressor.
Synonyms:	OTTHUMP00000161390; PDGRL; PRLTS

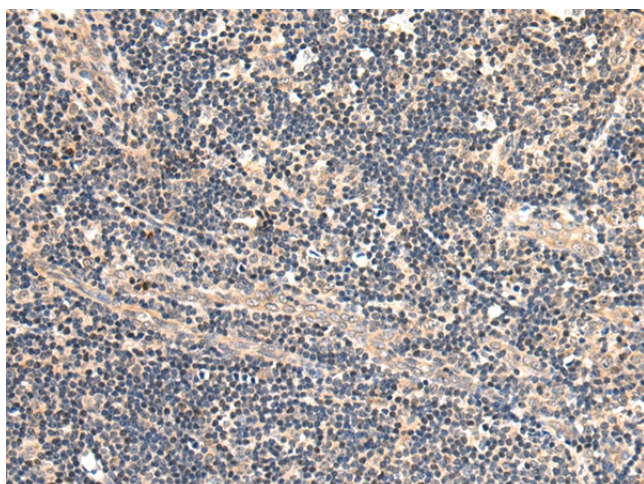


[View online >](#)

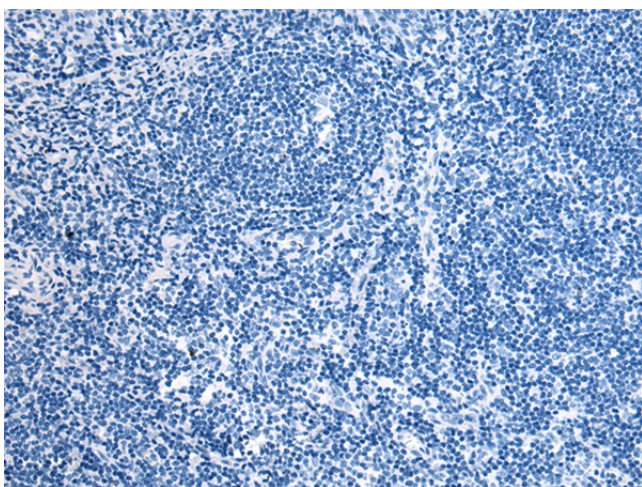
Product images:



Gel: 8%SDS-PAGE
Lysate: 40 µg
Lane 1-2: HUVEC
HT29 cell lysates
Primary antibody: TA369260 (PDGFRL Antibody)
at dilution 1/800
Secondary antibody: Goat anti rabbit IgG at
1/5000 dilution
Exposure time: 1 minute



Immunohistochemistry of paraffin-embedded
Human tonsil tissue using TA369260 (PDGFRL
Antibody) at dilution 1/140 (Original
magnification: ×200)



Immunohistochemistry of paraffin-embedded Human tonsil tissue using TA369260 (PDGFRL Antibody) at dilution 1/140, treated with fusion protein. (Original magnification: x200)