

Product datasheet for **TA369258**

SCGB2A1 Rabbit Polyclonal Antibody

Product data:

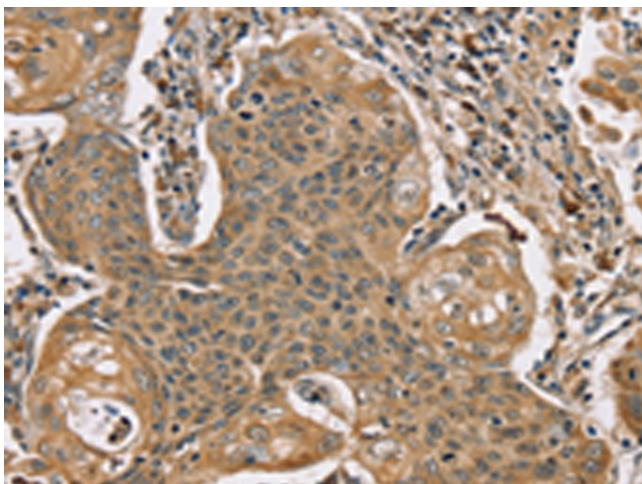
Product Type:	Primary Antibodies
Applications:	IHC
Recommended Dilution:	IHC: 50-200 Positive control: Human cervical cancer Predicted cell location: Cytoplasm
Reactivity:	Human
Host:	Rabbit
Isotype:	IgG
Clonality:	Polyclonal
Immunogen:	Fusion protein of human SCGB2A1
Formulation:	pH7.4 PBS, 0.05% NaN ₃ , 40% Glycerol
Concentration:	lot specific
Purification:	Antigen affinity purification
Conjugation:	Unconjugated
Storage:	Store at -20°C.
Stability:	1 year
Gene Name:	secretoglobin family 2A member 1
Database Link:	Entrez Gene 4246 Human O75556

Background: Mammaglobin-B also known as secretoglobin family 2A member 1 is a protein that in humans is encoded by the SCGB2A1 gene. SCGB2A1 expression is highly specific of mammary tissue, and has been used for identification and detection of disseminated breast cancer cells. May bind androgens and other steroids, may also bind estramustine, a chemotherapeutic agent used for prostate cancer. May be under transcriptional regulation of steroid hormones.

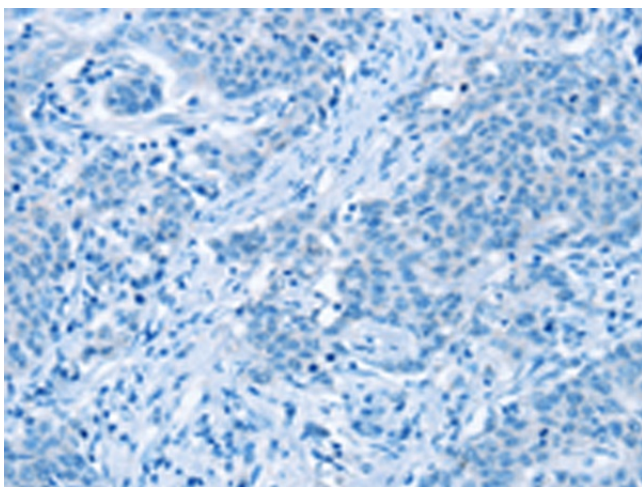
Synonyms: Lacryglobin; LIPHC; Lipophilin-C; LPHC; Mammaglobin-2; MGB2; MGC71973; UGB3



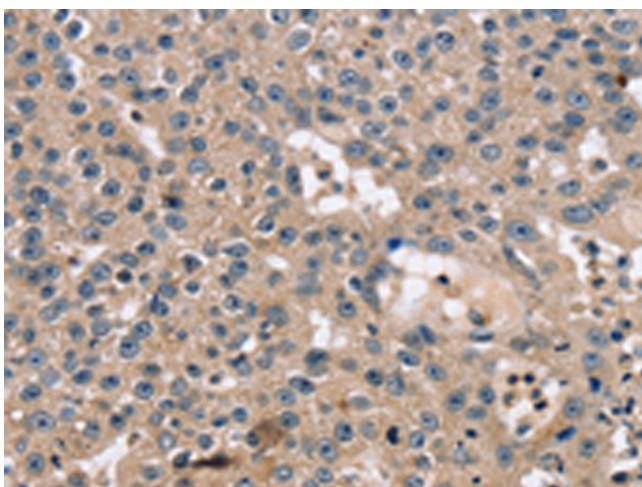
[View online »](#)

Product images:

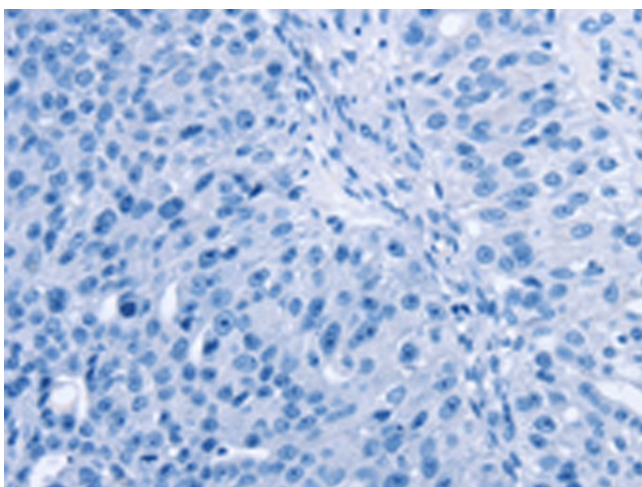
Immunohistochemistry of paraffin-embedded Human cervical cancer tissue using TA369258 (SCGB2A1 Antibody) at dilution 1/20 (Original magnification: ×200)



Immunohistochemistry of paraffin-embedded Human cervical cancer tissue using TA369258 (SCGB2A1 Antibody) at dilution 1/20, treated with fusion protein. (Original magnification: ×200)



Immunohistochemistry of paraffin-embedded Human breast cancer tissue using TA369258 (SCGB2A1 Antibody) at dilution 1/20 (Original magnification: ×200)



Immunohistochemistry of paraffin-embedded Human breast cancer tissue using TA369258 (SCGB2A1 Antibody) at dilution 1/20, treated with fusion protein. (Original magnification: ×200)