

## Product datasheet for **TA369256**

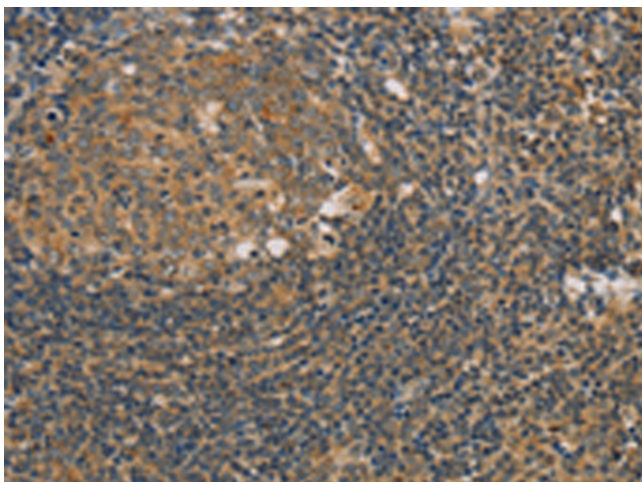
### PARP11 Rabbit Polyclonal Antibody

#### Product data:

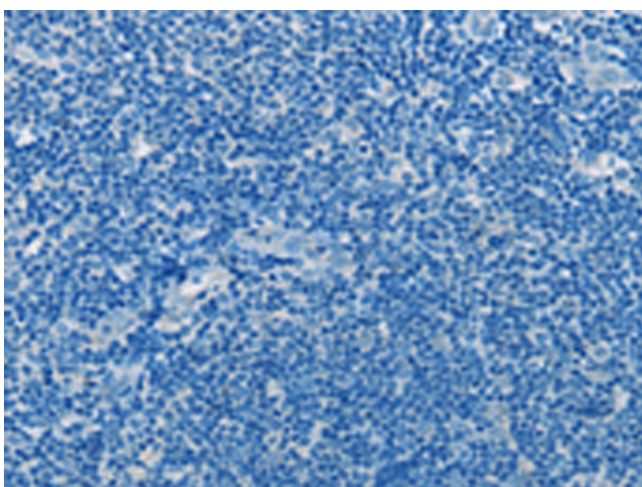
Product Type:	Primary Antibodies
Applications:	IHC
Recommended Dilution:	IHC: 25-100 Positive control: Human tonsil Predicted cell location: Cytoplasm
Reactivity:	Human, Mouse
Host:	Rabbit
Isotype:	IgG
Clonality:	Polyclonal
Immunogen:	Fusion protein of human PARP11
Formulation:	pH7.4 PBS, 0.05% NaN <sub>3</sub> , 40% Glycerol
Concentration:	lot specific
Purification:	Antigen affinity purification
Conjugation:	Unconjugated
Storage:	Store at -20°C.
Stability:	1 year
Gene Name:	poly(ADP-ribose) polymerase family member 11
Database Link:	<a href="#">Entrez Gene 57097 Human</a> <a href="#">Q9NR21</a>
Background:	Poly(ADP-ribosylation) is a method of DNA damage-dependent posttranslational modification that helps to rescue injured proliferating cells from cell death. The PARP (poly(ADP-ribose) polymerase) proteins comprise a superfamily of enzymes that functionally modify histones and other nuclear proteins, thereby preventing cell death. PARPs use NAD <sup>+</sup> as a substrate to catalytically transfer ADP-ribose residues onto protein acceptors; a process that, when repeated multiple times, leads to the formation of poly(ADPribose) chains on the protein.
Synonyms:	C12orf6; DKFZp779H0122; MIB006; PARP-11

[View online »](#)

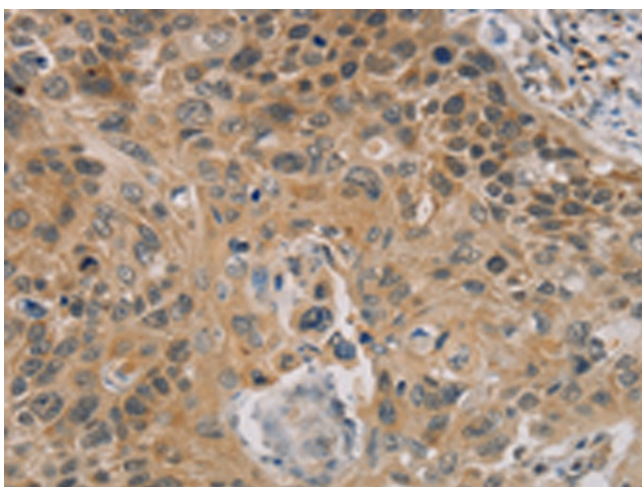
## Product images:



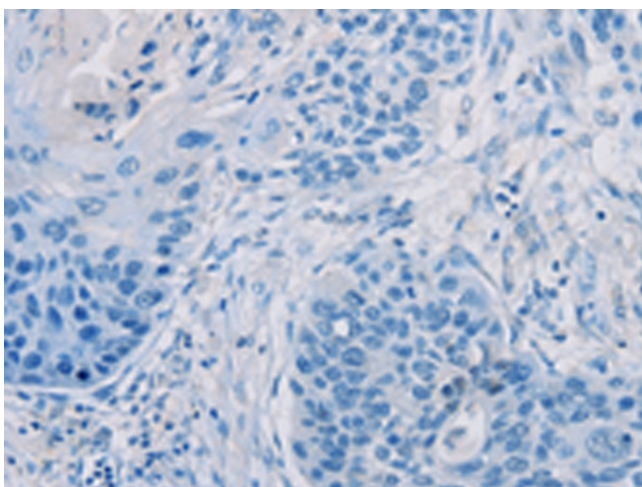
Immunohistochemistry of paraffin-embedded Human tonsil tissue using TA369256 (PARP11 Antibody) at dilution 1/20 (Original magnification: ×200)



Immunohistochemistry of paraffin-embedded Human tonsil tissue using TA369256 (PARP11 Antibody) at dilution 1/20, treated with fusion protein. (Original magnification: ×200)



Immunohistochemistry of paraffin-embedded Human esophagus cancer tissue using TA369256 (PARP11 Antibody) at dilution 1/20 (Original magnification: ×200)



Immunohistochemistry of paraffin-embedded Human esophagus cancer tissue using TA369256 (PARP11 Antibody) at dilution 1/20, treated with fusion protein. (Original magnification: ×200)