

## Product datasheet for **TA369249S**

### **NUSAP1 Rabbit Polyclonal Antibody**

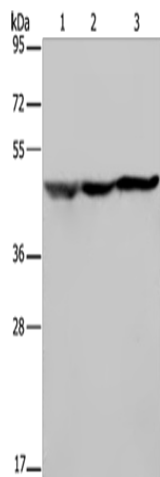
#### **Product data:**

Product Type:	Primary Antibodies
Applications:	WB
Recommended Dilution:	WB: 200-1000 WB positive control: HT-29, Hela and 293T cells
Reactivity:	Human
Host:	Rabbit
Isotype:	IgG
Clonality:	Polyclonal
Immunogen:	Fusion protein of human NUSAP1
Formulation:	pH7.4 PBS, 0.05% NaN <sub>3</sub> , 40% Glycerol
Purification:	Antigen affinity purification
Conjugation:	Unconjugated
Storage:	Store at -20°C.
Stability:	1 year
Predicted Protein Size:	49 kDa
Gene Name:	nucleolar and spindle associated protein 1
Database Link:	<a href="#">Entrez Gene 51203 Human Q9BXS6</a>
Background:	NUSAP1 is a nucleolar-spindle-associated protein that plays a role in spindle microtubule organization. May associate with chromosomes and promote the organization of mitotic spindle microtubules around them.
Synonyms:	ANKT; BM037; FLJ13421; LNP; NUSAP; PRO0310p1; Q0310; SAPL



[View online »](#)

## Product images:



Gel: 8%SDS-PAGE  
Lysate: 40  $\mu$ g  
Lane 1-3: HT29 cells  
Hela cells  
293T cells  
Primary antibody: [TA369249] (NUSAP1 Antibody)  
at dilution 1/200  
Secondary antibody: Goat anti rabbit IgG at  
1/8000 dilution  
Exposure time: 20 seconds