

## Product datasheet for **TA369233**

### NDUFS1 Rabbit Polyclonal Antibody

#### Product data:

Product Type:	Primary Antibodies
Applications:	IHC, WB
Recommended Dilution:	WB: 500-2000 WB positive control: 293T, PC3, hela, Jurkat and Raji cells IHC: 50-200 Positive control: Human prostate cancer Predicted cell location: Cytoplasm
Reactivity:	Human, Mouse, Rat
Host:	Rabbit
Isotype:	IgG
Clonality:	Polyclonal
Immunogen:	Fusion protein of human NDUFS1
Formulation:	pH7.4 PBS, 0.05% NaN <sub>3</sub> , 40% Glycerol
Concentration:	lot specific
Purification:	Antigen affinity purification
Conjugation:	Unconjugated
Storage:	Store at -20°C.
Stability:	1 year
Predicted Protein Size:	79 kDa
Gene Name:	NADH:ubiquinone oxidoreductase core subunit S1
Database Link:	<a href="#">Entrez Gene 4719 Human P28331</a>

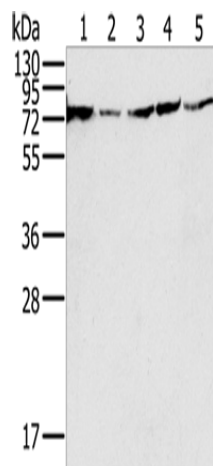
**Background:** The protein encoded by this gene belongs to the complex I 75 kDa subunit family. Mammalian complex I is composed of 45 different subunits. It locates at the mitochondrial inner membrane. This protein has NADH dehydrogenase activity and oxidoreductase activity. It transfers electrons from NADH to the respiratory chain. The immediate electron acceptor for the enzyme is believed to be ubiquinone. This protein is the largest subunit of complex I and it is a component of the iron-sulfur (IP) fragment of the enzyme.



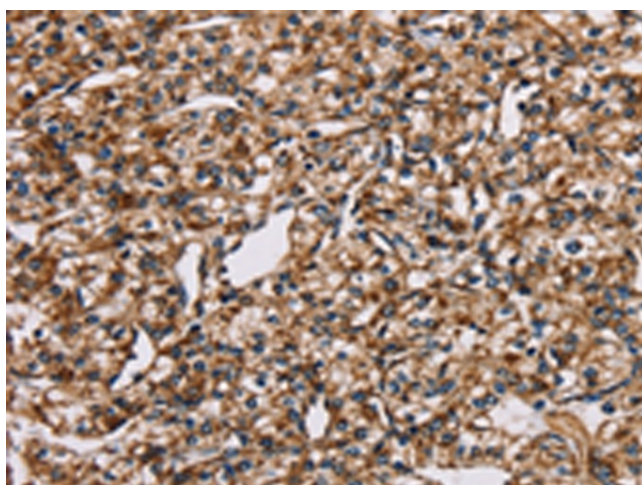
[View online »](#)

Synonyms: CI-75Kd; MGC26839; OTTHUMP00000206345; PRO1304

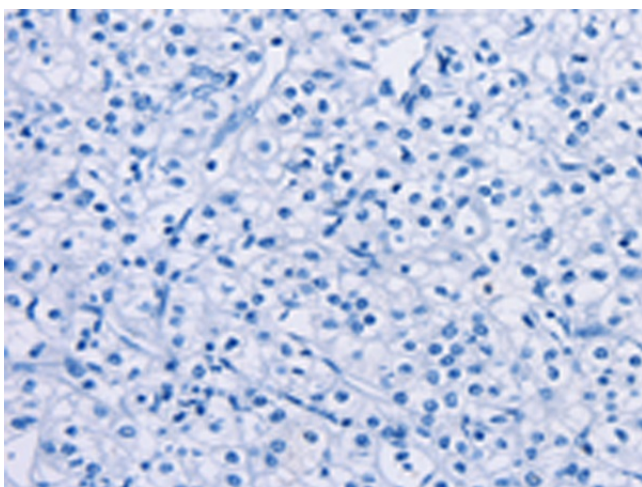
**Product images:**



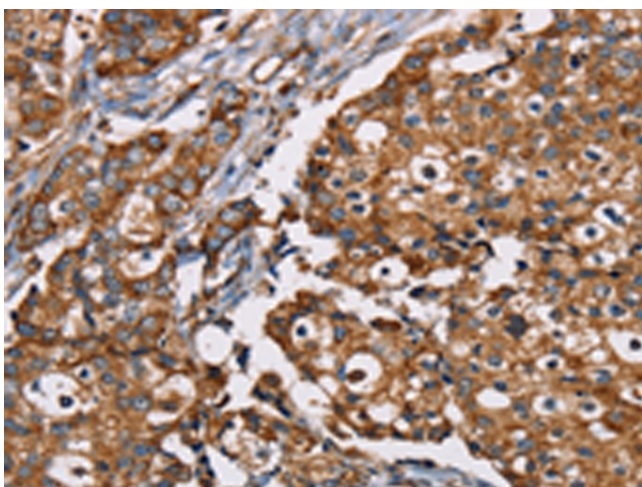
Gel: 10%SDS-PAGE  
 Lysate: 40 µg  
 Lane 1-5: 293T cells  
 PC3 cells  
 hela cells  
 Jurkat cells  
 Raji cells  
 Primary antibody: TA369233 (NDUFS1 Antibody)  
 at dilution 1/650  
 Secondary antibody: Goat anti rabbit IgG at  
 1/8000 dilution  
 Exposure time: 3 seconds



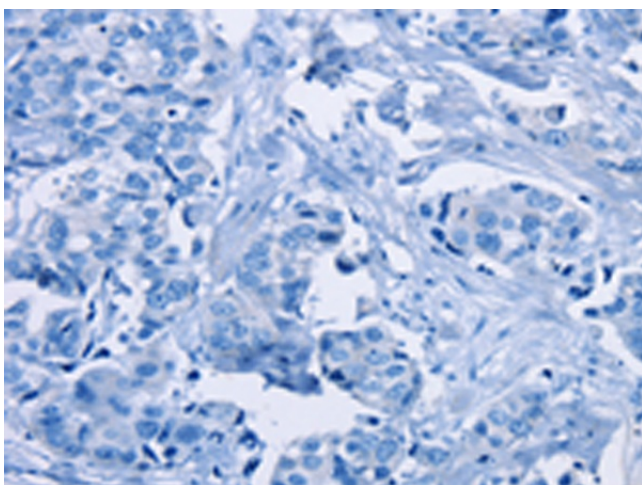
Immunohistochemistry of paraffin-embedded  
 Human prostate cancer tissue using TA369233  
 (NDUFS1 Antibody) at dilution 1/35 (Original  
 magnification: x200)



Immunohistochemistry of paraffin-embedded Human prostate cancer tissue using TA369233 (NDUFS1 Antibody) at dilution 1/35, treated with fusion protein. (Original magnification: ×200)



Immunohistochemistry of paraffin-embedded Human breast cancer tissue using TA369233 (NDUFS1 Antibody) at dilution 1/35 (Original magnification: ×200)



Immunohistochemistry of paraffin-embedded Human breast cancer tissue using TA369233 (NDUFS1 Antibody) at dilution 1/35, treated with fusion protein. (Original magnification: ×200)