

Product datasheet for **TA369226S**

NAT10 Rabbit Polyclonal Antibody

Product data:

Product Type:	Primary Antibodies
Applications:	WB
Recommended Dilution:	WB: 500-2000 WB positive control: A549, K562 and hela cells
Reactivity:	Human, Mouse
Host:	Rabbit
Isotype:	IgG
Clonality:	Polyclonal
Immunogen:	Fusion protein of human NAT10
Formulation:	pH7.4 PBS, 0.05% NaN ₃ , 40% Glycerol
Purification:	Antigen affinity purification
Conjugation:	Unconjugated
Storage:	Store at -20°C.
Stability:	1 year
Predicted Protein Size:	116 kDa
Gene Name:	N-acetyltransferase 10
Database Link:	Entrez Gene 55226 Human Q9H0A0

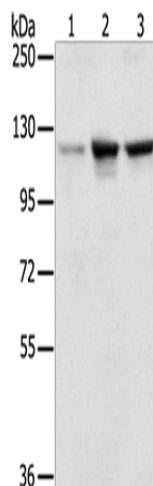
Background: NAT-10 (N-acetyltransferase 10) is a nuclear protein that belongs to the UPF0202 family. It has a single N-acetyltransferase domain that likely functions as a histone acetyltransferase. NAT10 functions primarily to regulate the activity of telomerase. It is upregulated in response to DNA damage and is likely to take part in genotoxic resistance and DNA repair. NAT-10 has a high binding potential for the promoter region of TERT which stimulates the production of telomerase. These varieties of function imply that human telomerase complexes have multiple functions rather than specific duties.

Synonyms: ALP; DKFZp434C116; FLJ10774; FLJ12179; FLJ23850; hALP; KIAA1709; NET43



[View online »](#)

Product images:



Gel: 6%SDS-PAGE

Lysate: 50 μ g

Lane 1-3: A549 cells

K562 cells

hela cells

Primary antibody: [TA369226] (NAT10 Antibody)
at dilution 1/200

Secondary antibody: Goat anti rabbit IgG at
1/8000 dilution

Exposure time: 10 seconds