

Product datasheet for **TA369223S**

Myosin light chain 3 (MYL3) Rabbit Polyclonal Antibody

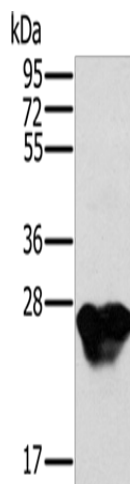
Product data:

| | |
|-------------------------|---|
| Product Type: | Primary Antibodies |
| Applications: | IHC, WB |
| Recommended Dilution: | WB: 1000-5000 WB positive control: Mouse heart tissue IHC: 50-200 Positive control: Human thyroid cancer Predicted cell location: Cytoplasm |
| Reactivity: | Human, Mouse, Rat |
| Host: | Rabbit |
| Isotype: | IgG |
| Clonality: | Polyclonal |
| Immunogen: | Fusion protein of human MYL3 |
| Formulation: | pH7.4 PBS, 0.05% NaN ₃ , 40% Glycerol |
| Purification: | Antigen affinity purification |
| Conjugation: | Unconjugated |
| Storage: | Store at -20°C. |
| Stability: | 1 year |
| Predicted Protein Size: | 22 kDa |
| Gene Name: | myosin light chain 3 |
| Database Link: | Entrez Gene 4634 Human P08590 |
| Background: | MYL3 encodes myosin light chain 3, an alkali light chain also referred to in the literature as both the ventricular isoform and the slow skeletal muscle isoform. Mutations in MYL3 have been identified as a cause of mid-left ventricular chamber type hypertrophic cardiomyopathy. |
| Synonyms: | CMH8; CMLC1; MLC1SB; MLC1V; OTTHUMP00000165922; VLC1 |

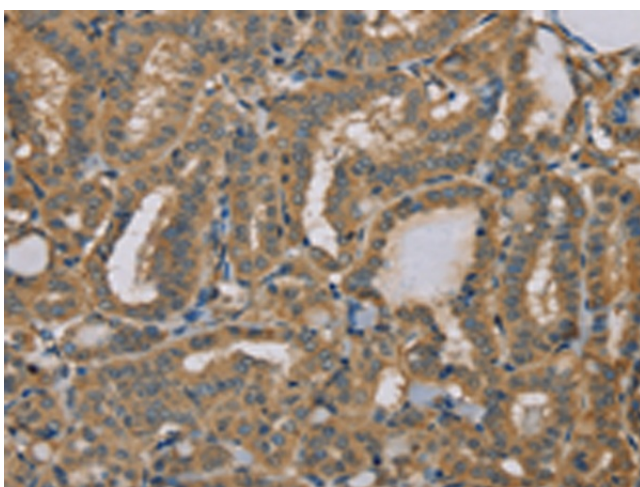


[View online »](#)

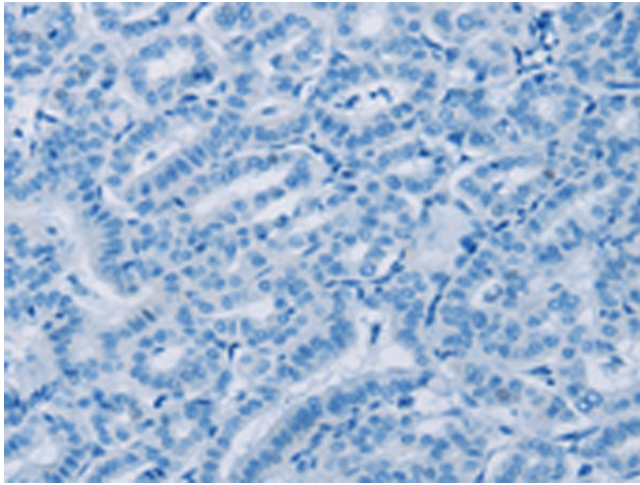
Product images:



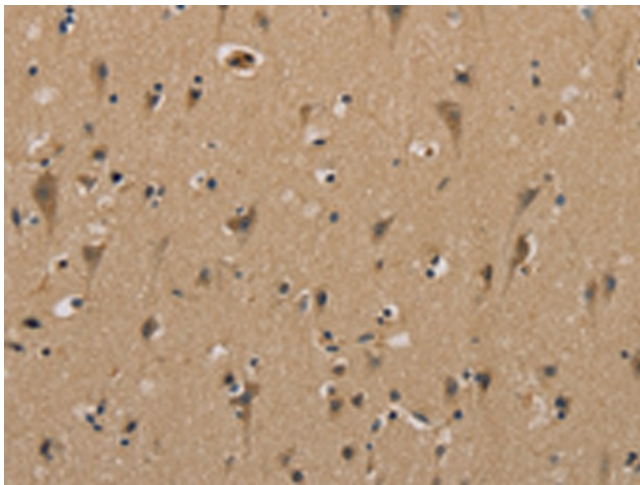
Gel: 10%SDS-PAGE
Lysate: 40 μ g
Lane: Mouse heart tissue
Primary antibody: [TA369223] (MYL3 Antibody) at dilution 1/500
Secondary antibody: Goat anti rabbit IgG at 1/8000 dilution
Exposure time: 10 seconds



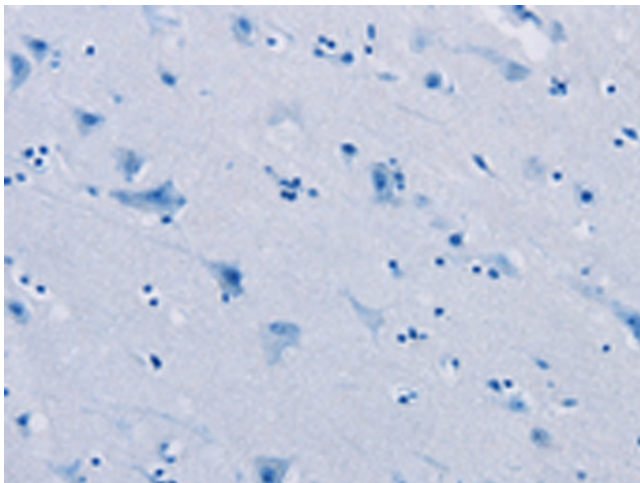
Immunohistochemistry of paraffin-embedded Human thyroid cancer tissue using [TA369223] (MYL3 Antibody) at dilution 1/40 (Original magnification: \times 200)



Immunohistochemistry of paraffin-embedded Human thyroid cancer tissue using [TA369223] (MYL3 Antibody) at dilution 1/40, treated with fusion protein. (Original magnification: $\times 200$)



Immunohistochemistry of paraffin-embedded Human brain tissue using [TA369223] (MYL3 Antibody) at dilution 1/40 (Original magnification: $\times 200$)



Immunohistochemistry of paraffin-embedded Human brain tissue using [TA369223] (MYL3 Antibody) at dilution 1/40, treated with fusion protein. (Original magnification: $\times 200$)