

## Product datasheet for **TA369215S**

### PSMC2 Rabbit Polyclonal Antibody

#### Product data:

Product Type:	Primary Antibodies
Applications:	IHC, WB
Recommended Dilution:	WB: 500-2000 WB positive control: 231 and Jurkat cells, mouse liver tissue, 293T and hela cells IHC: 50-200 Positive control: Human cervical cancer Predicted cell location: Cytoplasm and Nucleus
Reactivity:	Human, Mouse, Rat
Host:	Rabbit
Isotype:	IgG
Clonality:	Polyclonal
Immunogen:	Fusion protein of human PSMC2
Formulation:	pH7.4 PBS, 0.05% NaN <sub>3</sub> , 40% Glycerol
Purification:	Antigen affinity purification
Conjugation:	Unconjugated
Storage:	Store at -20°C.
Stability:	1 year
Predicted Protein Size:	49 kDa
Gene Name:	proteasome 26S subunit, ATPase 2
Database Link:	<a href="#">Entrez Gene 5701 Human P35998</a>



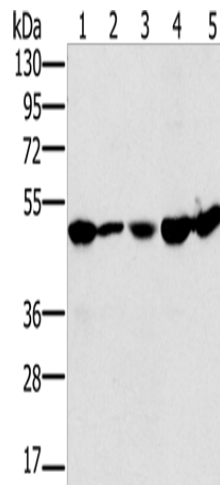
[View online »](#)

**Background:**

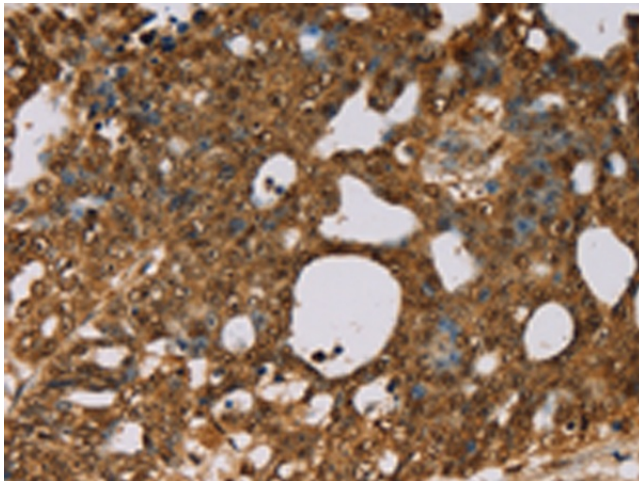
The 26S proteasome is a multicatalytic proteinase complex with a highly ordered structure composed of 2 complexes, a 20S core and a 19S regulator. The 20S core is composed of 4 rings of 28 non-identical subunits; 2 rings are composed of 7 alpha subunits and 2 rings are composed of 7 beta subunits. The 19S regulator is composed of a base, which contains 6 ATPase subunits and 2 non-ATPase subunits, and a lid, which contains up to 10 non-ATPase subunits. Proteasomes are distributed throughout eukaryotic cells at a high concentration and cleave peptides in an ATP/ubiquitin-dependent process in a non-lysosomal pathway. An essential function of a modified proteasome, the immunoproteasome, is the processing of class I MHC peptides. This gene encodes one of the ATPase subunits, a member of the triple-A family of ATPases which have a chaperone-like activity.

**Synonyms:**

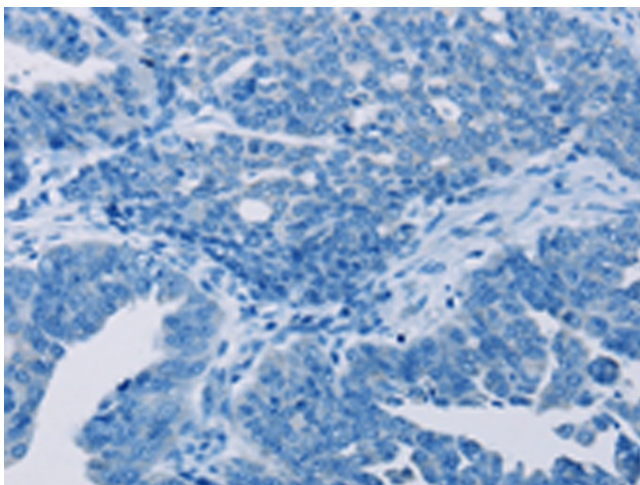
MGC3004; MSS1; Nbla10058; OTTHUMP00000211710; S7

**Product images:**

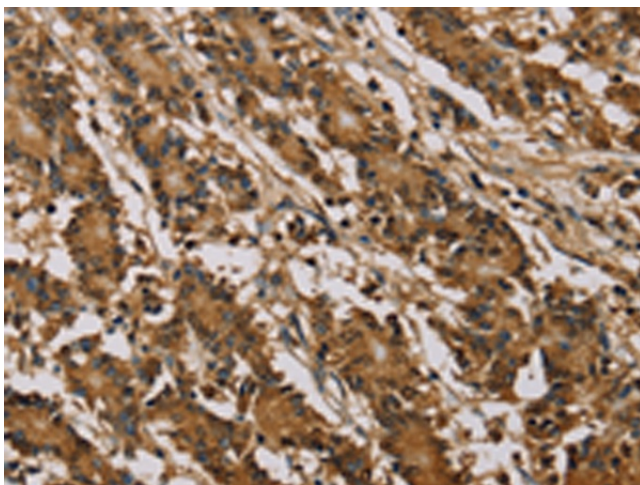
Gel: 8%SDS-PAGE  
Lysate: 40 µg  
Lane 1-5: 231 cells  
Jurkat cells  
mouse liver tissue  
293T cells  
hela cells  
Primary antibody: [TA369215] (PSMC2 Antibody)  
at dilution 1/400  
Secondary antibody: Goat anti rabbit IgG at  
1/8000 dilution  
Exposure time: 5 seconds



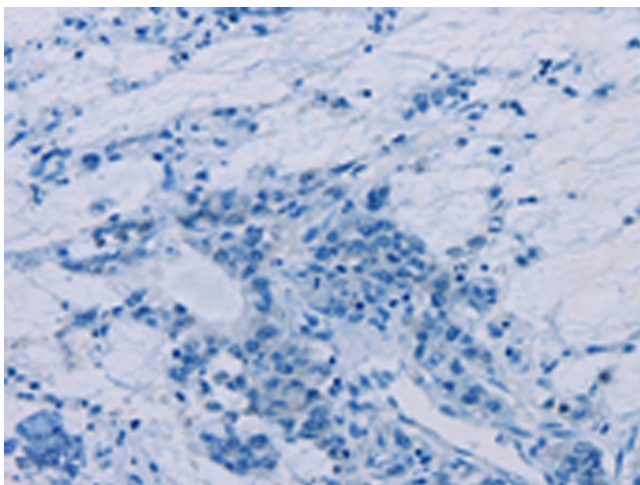
Immunohistochemistry of paraffin-embedded  
Human cervical cancer tissue using [TA369215]  
(PSMC2 Antibody) at dilution 1/30 (Original  
magnification: x200)



Immunohistochemistry of paraffin-embedded Human cervical cancer tissue using [TA369215] (PSMC2 Antibody) at dilution 1/30, treated with fusion protein. (Original magnification: ×200)



Immunohistochemistry of paraffin-embedded Human colon cancer tissue using [TA369215] (PSMC2 Antibody) at dilution 1/30 (Original magnification: ×200)



Immunohistochemistry of paraffin-embedded Human colon cancer tissue using [TA369215] (PSMC2 Antibody) at dilution 1/30, treated with fusion protein. (Original magnification: ×200)