

Product datasheet for **TA369214**

MRPL39 Rabbit Polyclonal Antibody

Product data:

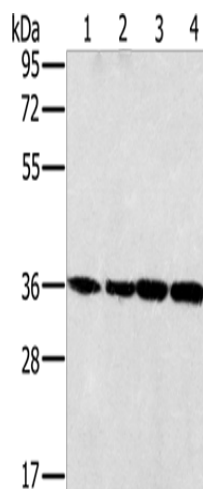
Product Type:	Primary Antibodies
Applications:	IHC, WB
Recommended Dilution:	WB: 500-2000 WB positive control: 293T, K562, 231 and hela cells IHC: 25-100 Positive control: Human colon cancer Predicted cell location: Cytoplasm
Reactivity:	Human, Mouse
Host:	Rabbit
Isotype:	IgG
Clonality:	Polyclonal
Immunogen:	Fusion protein of human MRPL39
Formulation:	pH7.4 PBS, 0.05% NaN ₃ , 40% Glycerol
Concentration:	lot specific
Purification:	Antigen affinity purification
Conjugation:	Unconjugated
Storage:	Store at -20°C.
Stability:	1 year
Predicted Protein Size:	39 kDa
Gene Name:	mitochondrial ribosomal protein L39
Database Link:	Entrez Gene 54148 Human Q9NYK5
Background:	Mammalian mitochondrial ribosomal proteins are encoded by nuclear genes and help in protein synthesis within the mitochondrion. Mitochondrial ribosomes (mitoribosomes) consist of a small 28S subunit and a large 39S subunit. They have an estimated 75% protein to rRNA composition compared to prokaryotic ribosomes, where this ratio is reversed. Another difference between mammalian mitoribosomes and prokaryotic ribosomes is that the latter contain a 5S rRNA.



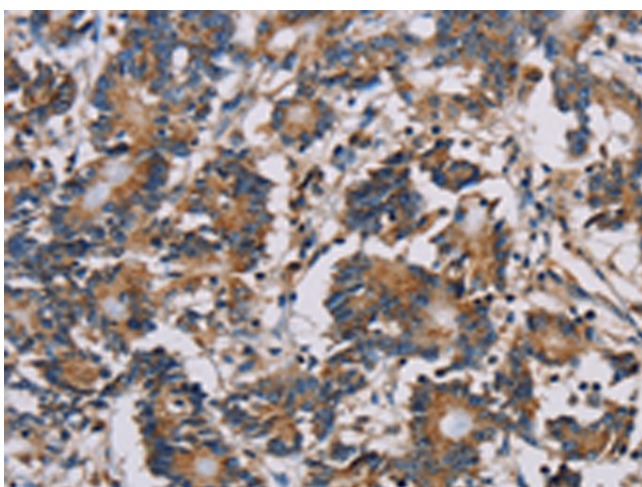
[View online »](#)

Synonyms: C21orf92; FLJ20451; L5mt; L39mt; MGC3400; MGC104174; MRP-L5; MRP-L39; MRPL5; MSTP003; PRED22; PRED66; RPML5

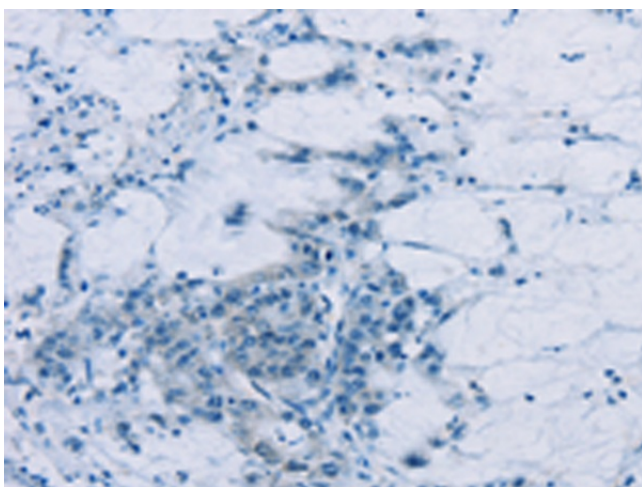
Product images:



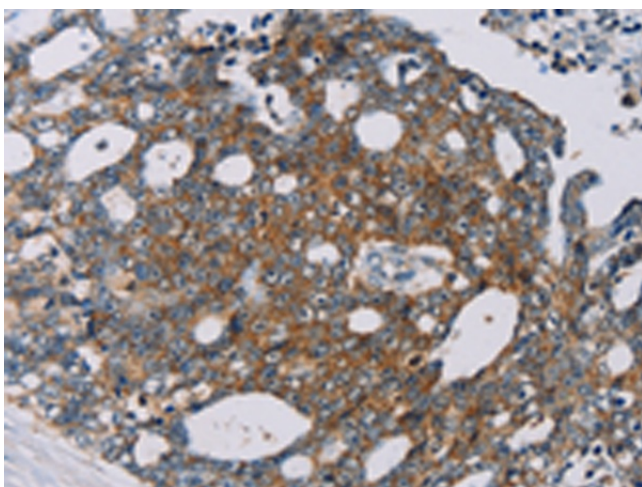
Gel: 8%SDS-PAGE
Lysate: 40 µg
Lane 1-4: 293T cells
K562 cells
231 cells
hela cells
Primary antibody: TA369214 (MRPL39 Antibody)
at dilution 1/400
Secondary antibody: Goat anti rabbit IgG at
1/8000 dilution
Exposure time: 5 seconds



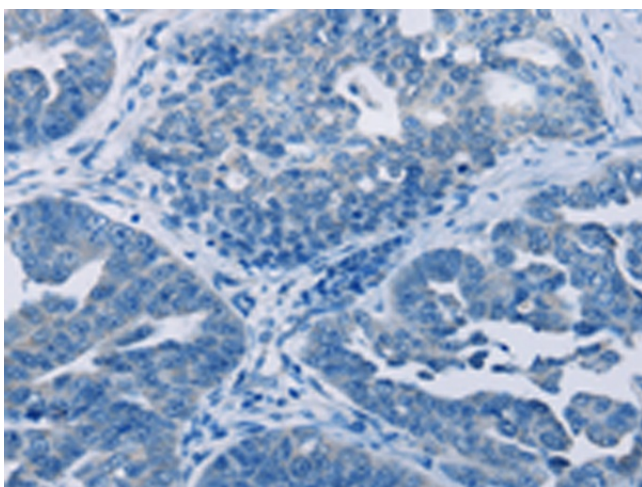
Immunohistochemistry of paraffin-embedded
Human colon cancer tissue using TA369214
(MRPL39 Antibody) at dilution 1/30 (Original
magnification: ×200)



Immunohistochemistry of paraffin-embedded Human colon cancer tissue using TA369214 (MRPL39 Antibody) at dilution 1/30, treated with fusion protein. (Original magnification: ×200)



Immunohistochemistry of paraffin-embedded Human cervical cancer tissue using TA369214 (MRPL39 Antibody) at dilution 1/30 (Original magnification: ×200)



Immunohistochemistry of paraffin-embedded Human cervical cancer tissue using TA369214 (MRPL39 Antibody) at dilution 1/30, treated with fusion protein. (Original magnification: ×200)