

Product datasheet for **TA369208S**

ENTPD7 Rabbit Polyclonal Antibody

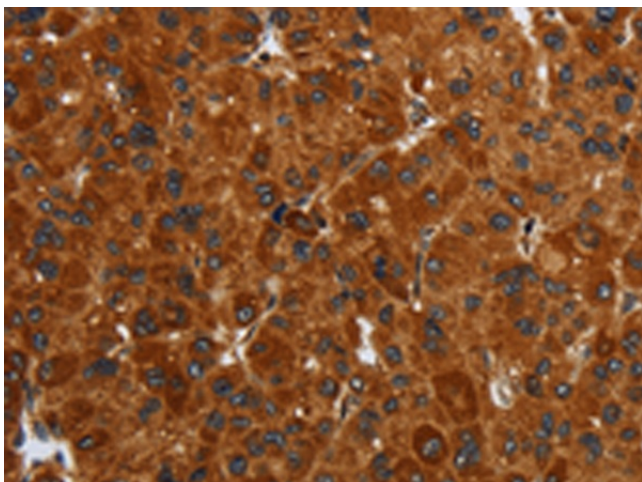
Product data:

Product Type:	Primary Antibodies
Applications:	IHC
Recommended Dilution:	IHC: 50-200 Positive control: Human liver cancer Predicted cell location: Cytoplasm
Reactivity:	Human, Mouse
Host:	Rabbit
Isotype:	IgG
Clonality:	Polyclonal
Immunogen:	Fusion protein of human ENTPD7
Formulation:	pH7.4 PBS, 0.05% NaN ₃ , 40% Glycerol
Purification:	Antigen affinity purification
Conjugation:	Unconjugated
Storage:	Store at -20°C.
Stability:	1 year
Gene Name:	ectonucleoside triphosphate diphosphohydrolase 7
Database Link:	Entrez Gene 57089 Human Q9NQZ7
Background:	LALP1 (lysosomal apyrase-like protein 1), also known as ENTPD7 (ectonucleoside triphosphate diphosphohydrolase 7), is a 604 amino acid multi-pass membrane protein that belongs to the GDA1/CD39 NTPase family. Preferentially hydrolyzing nucleoside 5'-triphosphates, LALP1 and has an order of activity with respect to possible substrates, which is UTP > GTP > CTP.
Synonyms:	DKFZp667O124; FLJ30978; FLJ31830; FLJ41522; FLJ95364; LALP1; MGC141913; RP11-483F11.1

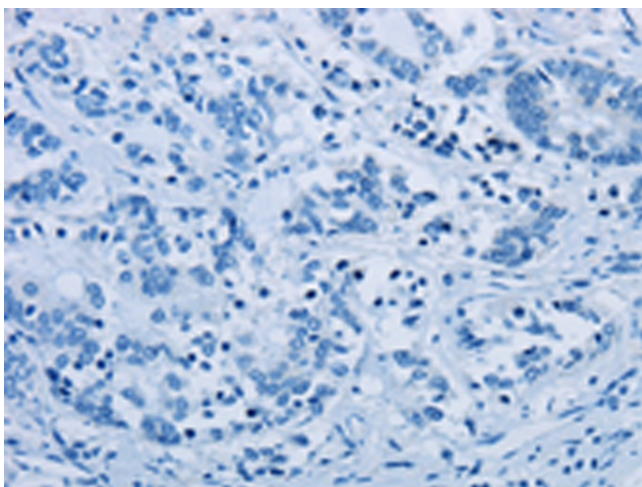


[View online »](#)

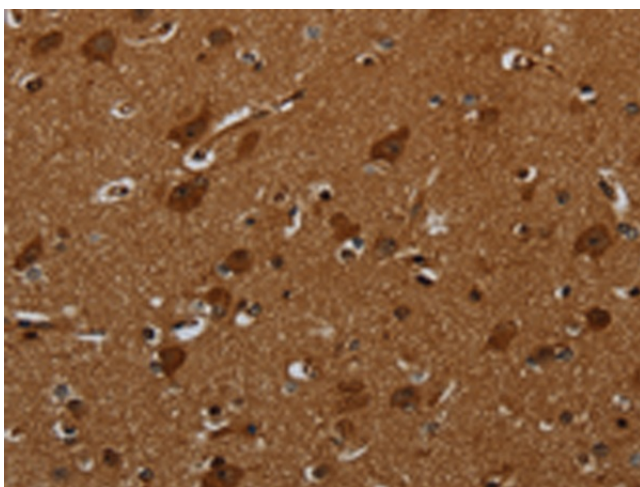
Product images:



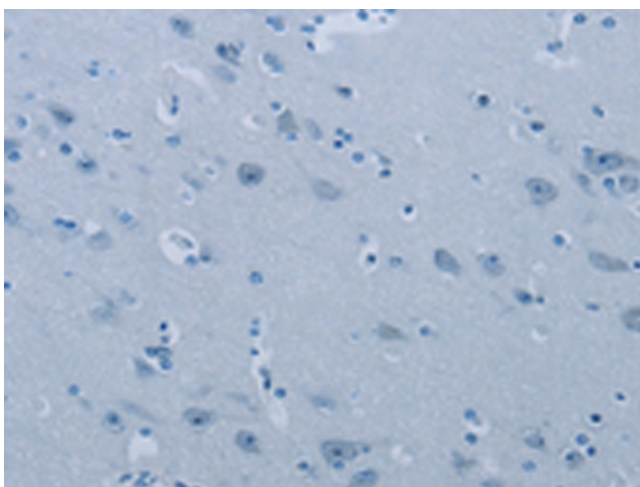
Immunohistochemistry of paraffin-embedded Human liver cancer tissue using [TA369208] (ENTPD7 Antibody) at dilution 1/40 (Original magnification: ×200)



Immunohistochemistry of paraffin-embedded Human liver cancer tissue using [TA369208] (ENTPD7 Antibody) at dilution 1/40, treated with fusion protein. (Original magnification: ×200)



Immunohistochemistry of paraffin-embedded Human brain tissue using [TA369208] (ENTPD7 Antibody) at dilution 1/40 (Original magnification: ×200)



Immunohistochemistry of paraffin-embedded Human brain tissue using [TA369208] (ENTPD7 Antibody) at dilution 1/40, treated with fusion protein. (Original magnification: ×200)