

Product datasheet for **TA369207**

SERPINB3 Rabbit Polyclonal Antibody

Product data:

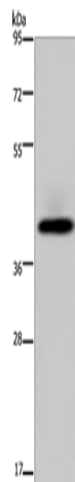
Product Type:	Primary Antibodies
Applications:	WB
Recommended Dilution:	WB: 500-2000 WB positive control: Human fetal liver tissue
Reactivity:	Human
Host:	Rabbit
Isotype:	IgG
Clonality:	Polyclonal
Immunogen:	Fusion protein of human SERPINB3
Formulation:	pH7.4 PBS, 0.05% NaN ₃ , 40% Glycerol
Concentration:	lot specific
Purification:	Antigen affinity purification
Conjugation:	Unconjugated
Storage:	Store at -20°C.
Stability:	1 year
Predicted Protein Size:	45 kDa
Gene Name:	serpin family B member 3
Database Link:	Entrez Gene 6317 Human P29508

Background: SERPINB3 (serpin peptidase inhibitor, clade B (ovalbumin), member 3), also known as SCCA1, increase in advancing stages of some cervical, lung, esophageal and head and neck cancers). Human chromosome position 18q21.3 contains a cluster of serpins, including a tandem duplication of the SCCA gene, plasminogen activator inhibitor type 2, and maspin. SCCA is transcribed by two nearly identical genes (SCCA1 and SCCA2), and is mainly produced as SCCA1. The human SCCA1 gene encodes a 390 amino acid protein that was originally isolated from a metastatic cervical squamous cell carcinoma.

Synonyms: HsT1196; SCC; SCCA; SCCA-1; SCCA-PD; SCCA1; T4-A



[View online »](#)

Product images:

Gel: 8%SDS-PAGE
Lysate: 40 μ g
Lane: Human fetal liver tissue
Primary antibody: TA369207 (SERPINB3 Antibody)
at dilution 1/200
Secondary antibody: Goat anti rabbit IgG at
1/8000 dilution
Exposure time: 10 seconds