

## Product datasheet for **TA369205S**

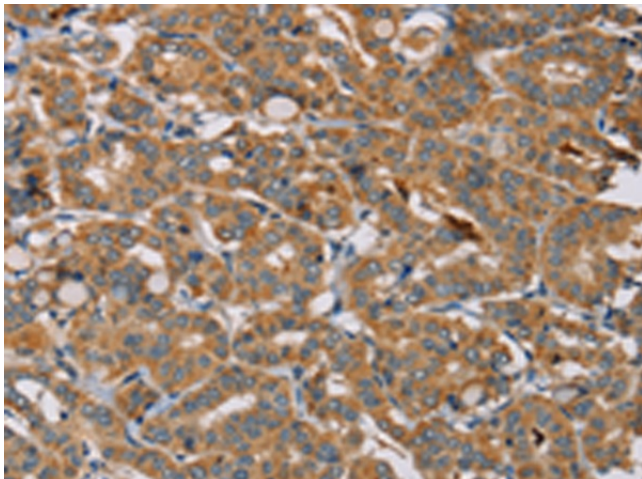
### **MBNL3 Rabbit Polyclonal Antibody**

#### **Product data:**

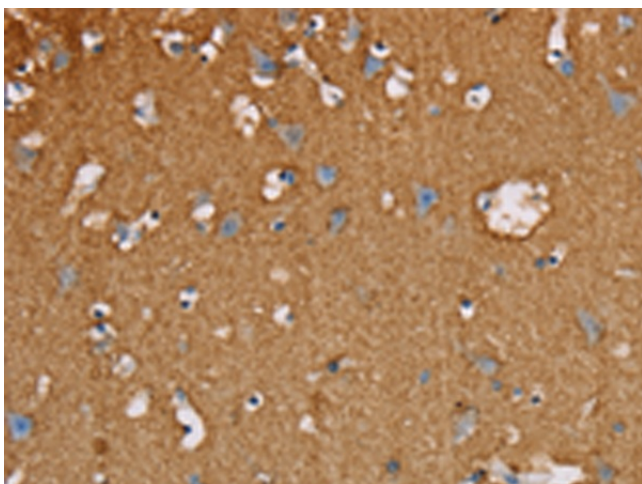
<b>Product Type:</b>	Primary Antibodies
<b>Applications:</b>	IHC
<b>Recommended Dilution:</b>	IHC: 50-200 Positive control: Human thyroid cancer Predicted cell location: Cytoplasm
<b>Reactivity:</b>	Human, Mouse
<b>Host:</b>	Rabbit
<b>Isotype:</b>	IgG
<b>Clonality:</b>	Polyclonal
<b>Immunogen:</b>	Fusion protein of human MBNL3
<b>Formulation:</b>	pH7.4 PBS, 0.05% NaN <sub>3</sub> , 40% Glycerol
<b>Purification:</b>	Antigen affinity purification
<b>Conjugation:</b>	Unconjugated
<b>Storage:</b>	Store at -20°C.
<b>Stability:</b>	1 year
<b>Gene Name:</b>	muscleblind like splicing regulator 3
<b>Database Link:</b>	<a href="#">Entrez Gene 55796 Human Q9NUK0</a>
<b>Background:</b>	This gene encodes a member of the muscleblind-like family of proteins. The encoded protein may function in regulation of alternative splicing and may play a role in the pathophysiology of myotonic dystrophy. Alternatively spliced transcript variants have been described.
<b>Synonyms:</b>	CHCR; FLJ11316; FLJ97142; MBLX; MBLX39; MBXL



[View online »](#)

**Product images:**

Immunohistochemistry of paraffin-embedded Human thyroid cancer tissue using [TA369205] (MBNL3 Antibody) at dilution 1/20. (Original magnification: ×200)



Immunohistochemistry of paraffin-embedded Human brain tissue using [TA369205] (MBNL3 Antibody) at dilution 1/20. (Original magnification: ×200)