

## Product datasheet for **TA369195**

### LRRC15 Rabbit Polyclonal Antibody

#### Product data:

Product Type:	Primary Antibodies
Applications:	IHC
Recommended Dilution:	IHC: 100-300 Positive control: Human prostate cancer Predicted cell location: Cytoplasm
Reactivity:	Human, Mouse, Rat
Host:	Rabbit
Isotype:	IgG
Clonality:	Polyclonal
Immunogen:	Fusion protein of human LRRC15
Formulation:	pH7.4 PBS, 0.05% NaN <sub>3</sub> , 40% Glycerol
Concentration:	lot specific
Purification:	Antigen affinity purification
Conjugation:	Unconjugated
Storage:	Store at -20°C.
Stability:	1 year
Gene Name:	leucine rich repeat containing 15
Database Link:	<a href="#">Entrez Gene 131578 Human Q8TF66</a>



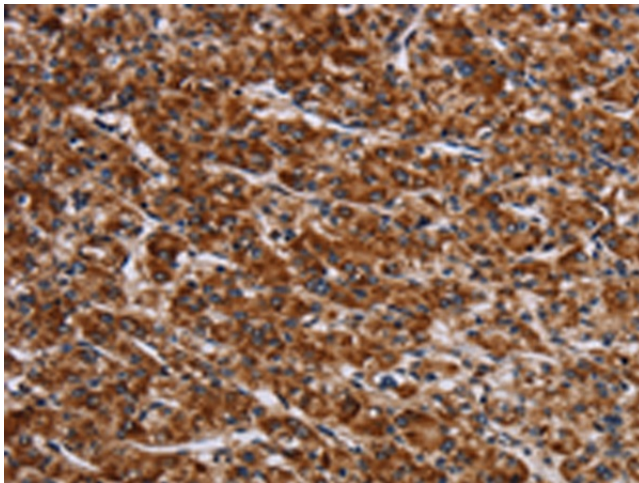
[View online »](#)

**Background:**

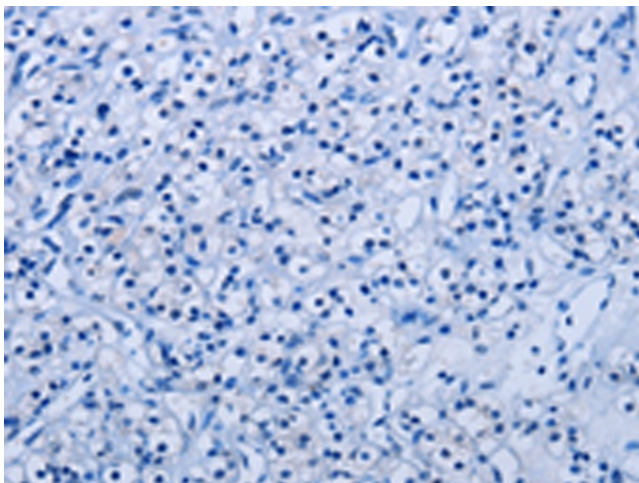
Leucine-rich repeats (LRRs) are 20-29 amino acid motifs that mediate protein-protein interactions. The primary function of these motifs is to provide a versatile structural framework for the formation of these protein-protein interactions. LRRs are present in a variety of proteins with diverse structure and function, including innate immunity and nervous system development. Several human diseases are associated with mutations in genes encoding LRR-containing proteins. The leucine-rich repeat-containing protein 15 (LRRC15, also designated LIB) is a 581 amino acid protein that contains 15 LRR repeats and is involved in cell-cell and/or -extracellular matrix interactions. LRRC15 is frequently overexpressed in multiple tumor types, most notably breast carcinoma. It is also associated with the pathogenesis of Alzheimer's disease.

**Synonyms:**

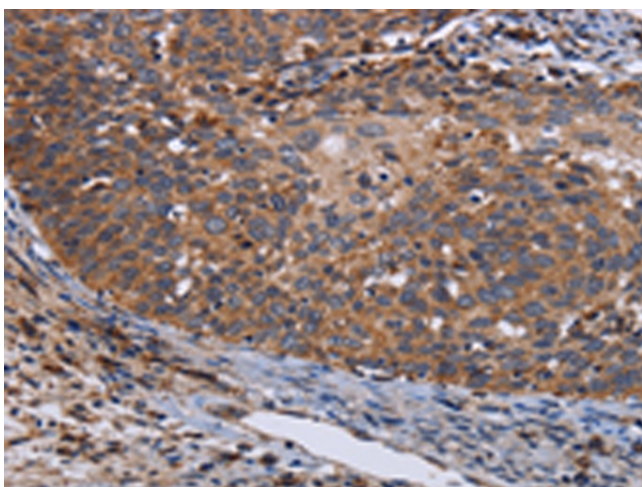
hLib; LIB; OTTHUMP00000209125

**Product images:**

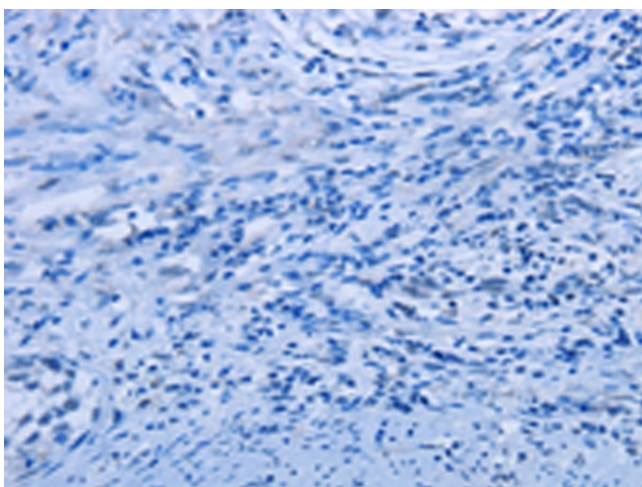
Immunohistochemistry of paraffin-embedded Human prostate cancer tissue using TA369195 (LRRC15 Antibody) at dilution 1/60 (Original magnification: ×200)



Immunohistochemistry of paraffin-embedded Human prostate cancer tissue using TA369195 (LRRC15 Antibody) at dilution 1/60, treated with fusion protein. (Original magnification: ×200)



Immunohistochemistry of paraffin-embedded Human cervical cancer tissue using TA369195 (LRRC15 Antibody) at dilution 1/60 (Original magnification:  $\times 200$ )



Immunohistochemistry of paraffin-embedded Human cervical cancer tissue using TA369195 (LRRC15 Antibody) at dilution 1/60, treated with fusion protein. (Original magnification:  $\times 200$ )