

Product datasheet for **TA369187**

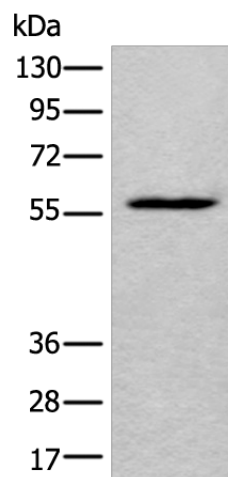
LDHD Rabbit Polyclonal Antibody

Product data:

| | |
|-------------------------|--|
| Product Type: | Primary Antibodies |
| Applications: | WB |
| Recommended Dilution: | WB: 500-2000 WB positive control: HEPG2 cell lysate |
| Reactivity: | Human |
| Host: | Rabbit |
| Isotype: | IgG |
| Clonality: | Polyclonal |
| Immunogen: | Fusion protein of human LDHD |
| Formulation: | pH7.4 PBS, 0.05% NaN ₃ , 40% Glycerol |
| Concentration: | lot specific |
| Purification: | Antigen affinity purification |
| Conjugation: | Unconjugated |
| Storage: | Store at -20°C. |
| Stability: | 1 year |
| Predicted Protein Size: | 55 kDa |
| Gene Name: | lactate dehydrogenase D |
| Database Link: | Entrez Gene 197257 Human Q86WU2 |
| Background: | The protein encoded by this gene belongs to the D-isomer specific 2-hydroxyacid dehydrogenase family. The similar protein in yeast has both D-lactate and D-glycerate dehydrogenase activities. Alternative splicing occurs at this locus and two transcript variants encoding distinct isoforms have been identified. |
| Synonyms: | DLD; MGC57726 |



[View online »](#)

Product images:

Gel: 8%SDS-PAGE
Lysate: 40 μ g
Lane: HEPG2 cell lysate
Primary antibody: TA369187 (LDHD Antibody) at dilution 1/400
Secondary antibody: Goat anti rabbit IgG at 1/8000 dilution
Exposure time: 30 seconds