

Product datasheet for **TA369186**

Lactate Dehydrogenase C (LDHC) Rabbit Polyclonal Antibody

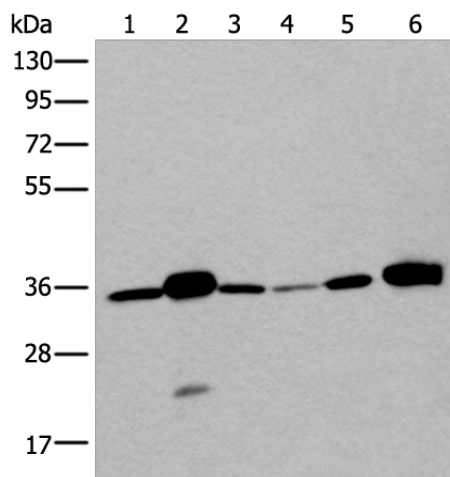
Product data:

Product Type:	Primary Antibodies
Applications:	IHC, WB
Recommended Dilution:	WB: 200-1000 WB positive control: Mouse testis tissue, Human testis tissue, 293T cell, Human bladder transitional cell carcinoma grade 2-3 tissue, Human fetal liver tissue, A549 cell lysates IHC: 20-100 Positive control: Human tonsil Predicted cell location: Cytoplasm
Reactivity:	Human
Host:	Rabbit
Isotype:	IgG
Clonality:	Polyclonal
Immunogen:	Fusion protein of human LDHC
Formulation:	pH7.4 PBS, 0.05% NaN ₃ , 40% Glycerol
Concentration:	lot specific
Purification:	Antigen affinity purification
Conjugation:	Unconjugated
Storage:	Store at -20°C.
Stability:	1 year
Predicted Protein Size:	36 kDa
Gene Name:	lactate dehydrogenase C
Database Link:	Entrez Gene 3948 Human P07864
Background:	Lactate dehydrogenase C catalyzes the conversion of L-lactate and NAD to pyruvate and NADH in the final step of anaerobic glycolysis. LDHC is testis-specific and belongs to the lactate dehydrogenase family. Two transcript variants have been detected which differ in the 5' untranslated region.
Synonyms:	CT32; LDH-C; LDH-X; LDH3; LDHX; MGC111073

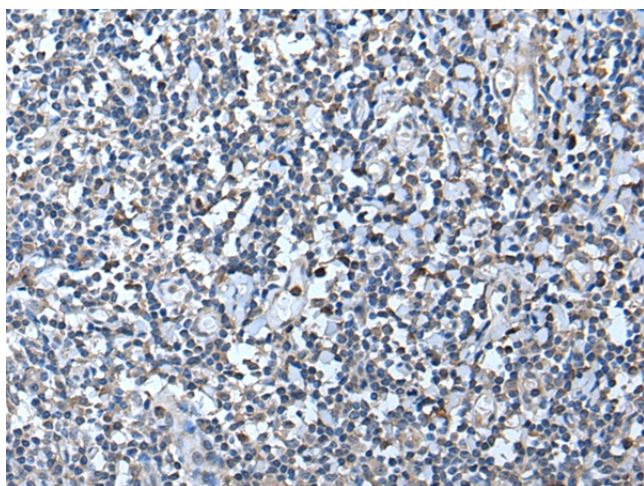


[View online »](#)

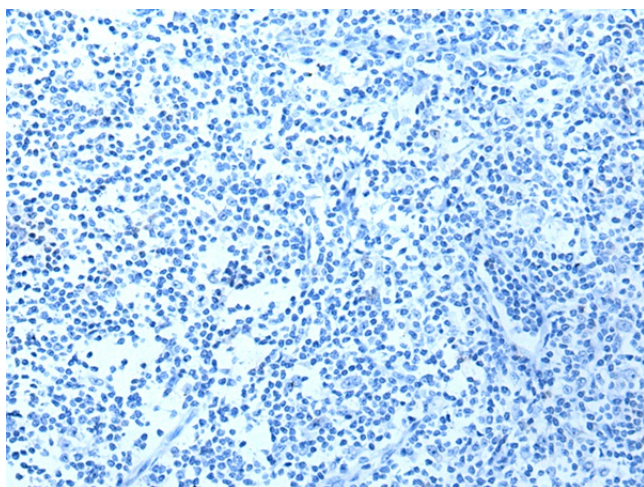
Product images:



Gel: 8%SDS-PAGE
 Lysate: 40 μ g
 Lane 1-6: Mouse testis tissue
 Human testis tissue
 293T cell
 Human bladder transitional cell carcinoma grade
 2-3 tissue
 Human fetal liver tissue
 A549 cell lysates
 Primary antibody: TA369186 (LDHC Antibody) at
 dilution 1/250
 Secondary antibody: Goat anti rabbit IgG at
 1/8000 dilution
 Exposure time: 15 seconds



Immunohistochemistry of paraffin-embedded
 Human tonsil tissue using TA369186 (LDHC
 Antibody) at dilution 1/25 (Original magnification:
 \times 200)



Immunohistochemistry of paraffin-embedded Human tonsil tissue using TA369186 (LDHC Antibody) at dilution 1/25, treated with fusion protein. (Original magnification: $\times 200$)