

## Product datasheet for **TA369184S**

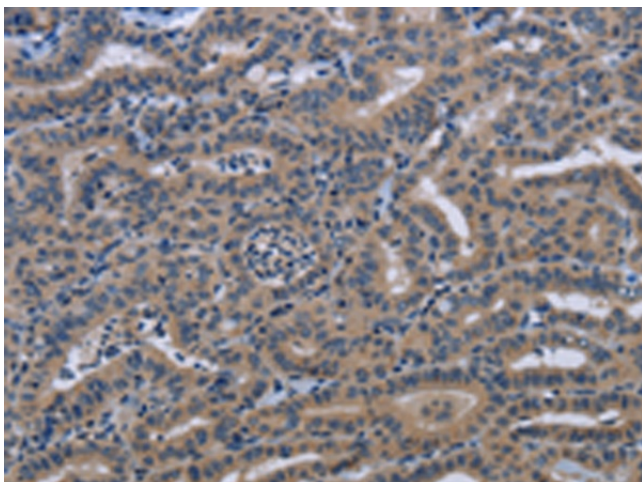
### KLHL2 Rabbit Polyclonal Antibody

#### Product data:

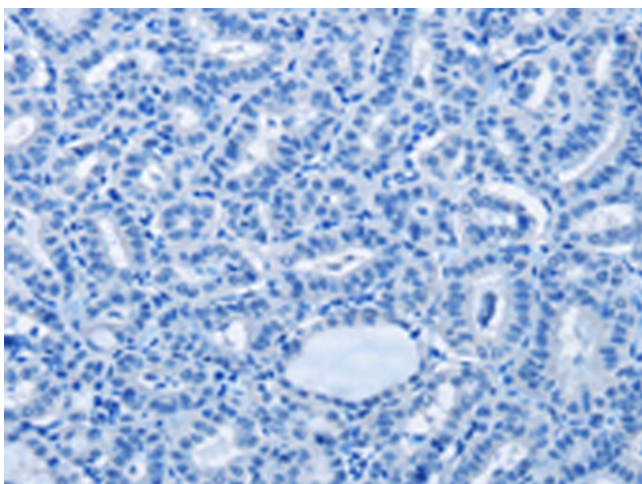
Product Type:	Primary Antibodies
Applications:	IHC
Recommended Dilution:	IHC: 25-100 Positive control: Human thyroid cancer Predicted cell location: Cytoplasm
Reactivity:	Human, Mouse, Rat
Host:	Rabbit
Isotype:	IgG
Clonality:	Polyclonal
Immunogen:	Fusion protein of human KLHL2
Formulation:	pH7.4 PBS, 0.05% NaN <sub>3</sub> , 40% Glycerol
Purification:	Antigen affinity purification
Conjugation:	Unconjugated
Storage:	Store at -20°C.
Stability:	1 year
Gene Name:	kelch like family member 2
Database Link:	<a href="#">Entrez Gene 11275 Human O95198</a>
Background:	KLHL2 (kelch-like protein 2), also known as actin-binding protein Mayven, is a 593 amino acid actin-binding protein. Highly expressed in brain, KLHL2 is thought to play a role in the organization of the actin cytoskeleton in brain cells.
Synonyms:	ABP-KELCH; kelch; MAV; MAYVEN



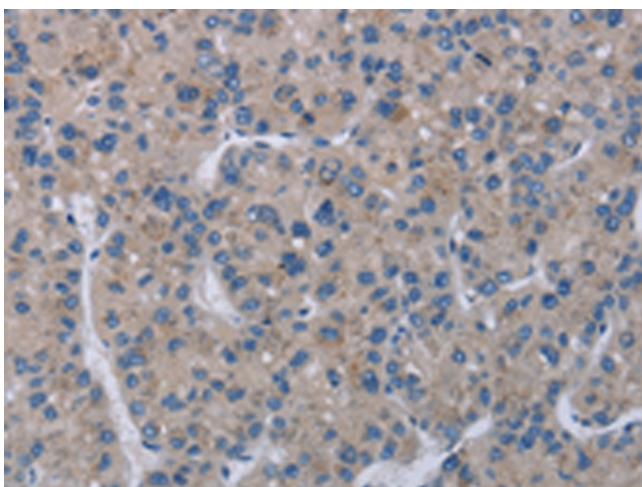
[View online »](#)

**Product images:**

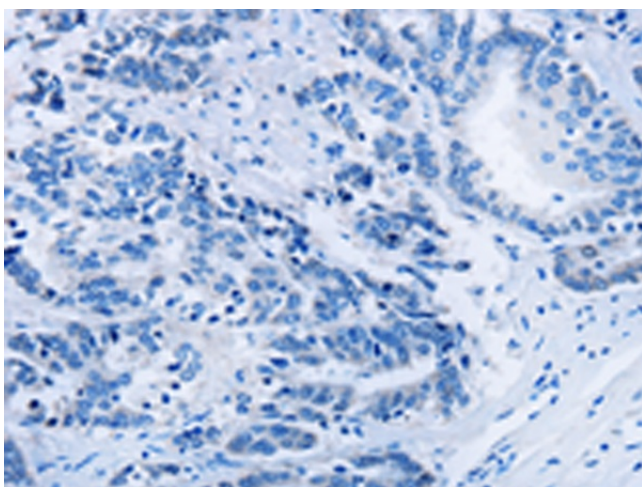
Immunohistochemistry of paraffin-embedded Human thyroid cancer tissue using [TA369184] (KLHL2 Antibody) at dilution 1/20 (Original magnification:  $\times 200$ )



Immunohistochemistry of paraffin-embedded Human thyroid cancer tissue using [TA369184] (KLHL2 Antibody) at dilution 1/20, treated with fusion protein. (Original magnification:  $\times 200$ )



Immunohistochemistry of paraffin-embedded Human liver cancer tissue using [TA369184] (KLHL2 Antibody) at dilution 1/20 (Original magnification:  $\times 200$ )



Immunohistochemistry of paraffin-embedded Human liver cancer tissue using [TA369184] (KLHL2 Antibody) at dilution 1/20, treated with fusion protein. (Original magnification:  $\times 200$ )