

Product datasheet for **TA369183**

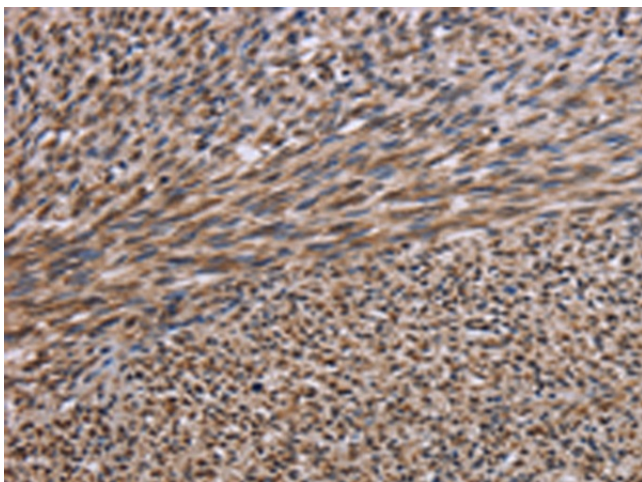
Kinesin Heavy Chain 2 (KIF2A) Rabbit Polyclonal Antibody

Product data:

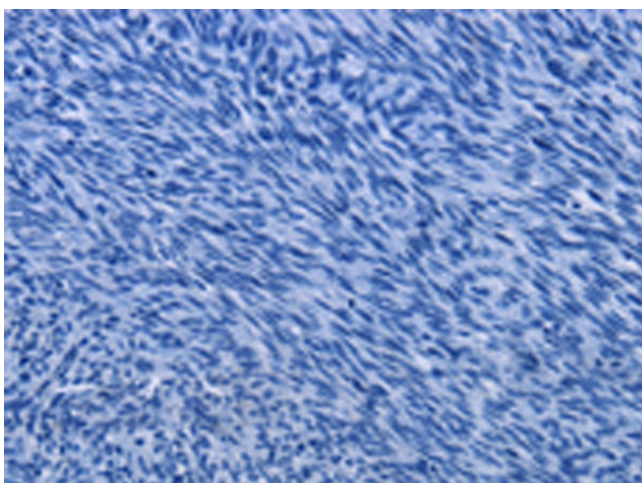
Product Type:	Primary Antibodies
Applications:	IHC
Recommended Dilution:	IHC: 50-200 Positive control: Human sarcoma Predicted cell location: Cytoplasm
Reactivity:	Human, Mouse, Rat
Host:	Rabbit
Isotype:	IgG
Clonality:	Polyclonal
Immunogen:	Fusion protein of human KIF2A
Formulation:	pH7.4 PBS, 0.05% NaN ₃ , 40% Glycerol
Concentration:	lot specific
Purification:	Antigen affinity purification
Conjugation:	Unconjugated
Storage:	Store at -20°C.
Stability:	1 year
Gene Name:	kinesin heavy chain member 2A
Database Link:	Entrez Gene 3796 Human O00139
Background:	The protein encoded by this gene is a plus end-directed motor required for normal mitotic progression. The encoded protein is required for normal spindle activity during mitosis and is necessary for normal brain development. Several transcript variants encoding different isoforms have been found for this gene.
Synonyms:	HK2; KIF2; Kinesin-2; KNS2



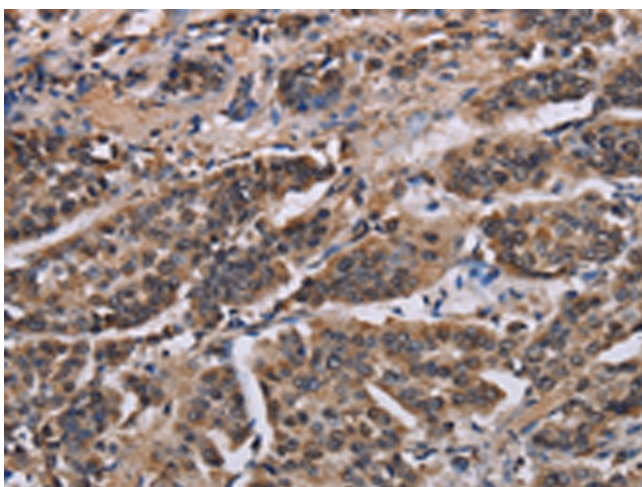
[View online »](#)

Product images:

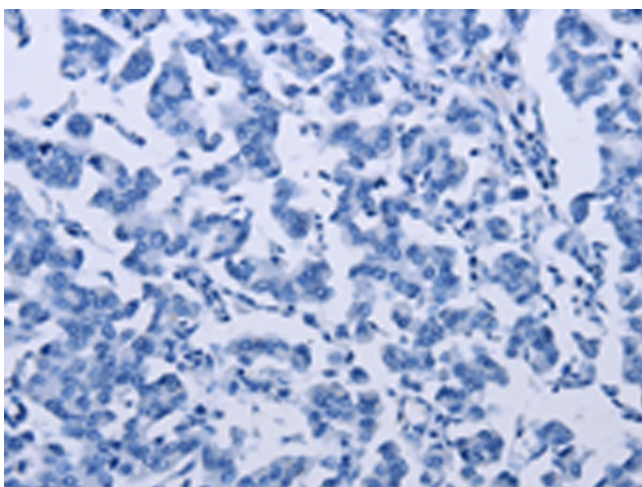
Immunohistochemistry of paraffin-embedded Human sarcoma tissue using TA369183 (KIF2A Antibody) at dilution 1/30 (Original magnification: ×200)



Immunohistochemistry of paraffin-embedded Human sarcoma tissue using TA369183 (KIF2A Antibody) at dilution 1/30, treated with fusion protein. (Original magnification: ×200)



Immunohistochemistry of paraffin-embedded Human breast cancer tissue using TA369183 (KIF2A Antibody) at dilution 1/30 (Original magnification: ×200)



Immunohistochemistry of paraffin-embedded Human breast cancer tissue using TA369183 (KIF2A Antibody) at dilution 1/30, treated with fusion protein. (Original magnification: ×200)