

## Product datasheet for **TA369179**

### **KDM3B Rabbit Polyclonal Antibody**

#### **Product data:**

Product Type:	Primary Antibodies
Applications:	IHC
Recommended Dilution:	IHC: 50-200 Positive control: Human lung cancer Predicted cell location: Nucleus
Reactivity:	Human, Mouse
Host:	Rabbit
Isotype:	IgG
Clonality:	Polyclonal
Immunogen:	Fusion protein of human KDM3B
Formulation:	pH7.4 PBS, 0.05% NaN <sub>3</sub> , 40% Glycerol
Concentration:	lot specific
Purification:	Antigen affinity purification
Conjugation:	Unconjugated
Storage:	Store at -20°C.
Stability:	1 year
Gene Name:	lysine demethylase 3B
Database Link:	<a href="#">Entrez Gene 51780 Human Q7LBC6</a>



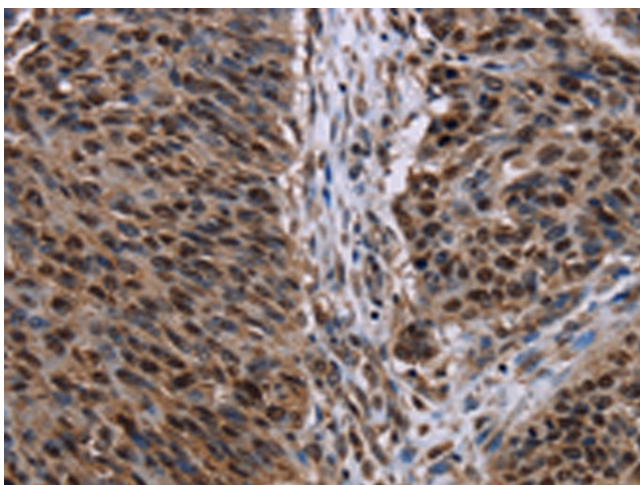
[View online »](#)

**Background:**

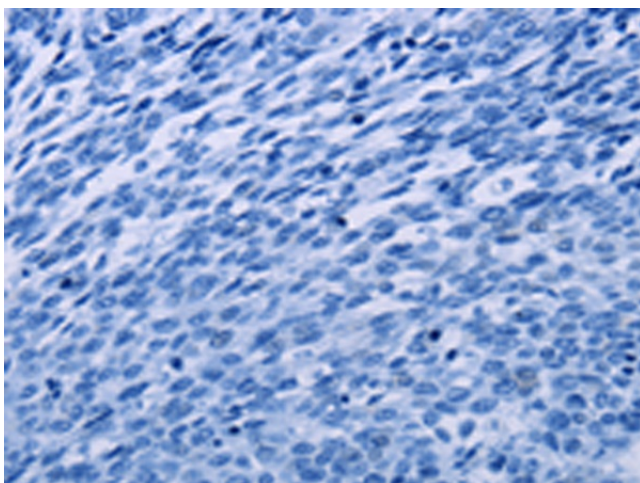
JMJD1B (jumonji domain containing 1B), also known as KDM3B, 5qNCA (5q Nuclear Co-Activator) or C5orf7, is a member of the JHDM2 histone demethylase family of proteins. Expressed in a wide variety of tissues, JMJD1B localizes to the nucleus and contains one JMJC domain and a C-terminal zinc finger motif. JMJD1B functions as a histone demethylase and, using iron as a cofactor, demethylates lysine-9 of Histone H3. This suggests that JMJD1B plays a central role in the histone code. The gene encoding human JMJD1B is located within the 5q region of the genome that is often deleted in myeloid leukemias and myelodysplasias. This implies that JMJD1B may function as a tumor suppressor of myeloid leukemia. Ectopic expression of JMJD1B exhibits growth suppressive activities, further supporting a role for JMJD1B in tumor suppression.

**Synonyms:**

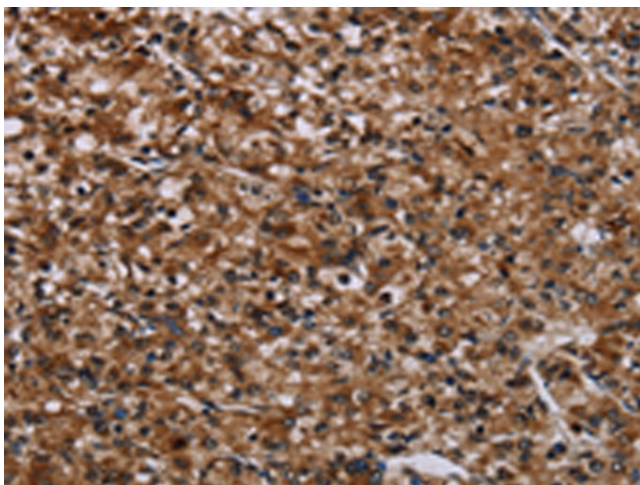
5qNCA; C5orf7; JHDM2B; JMJD1B; KIAA1082; NET22

**Product images:**

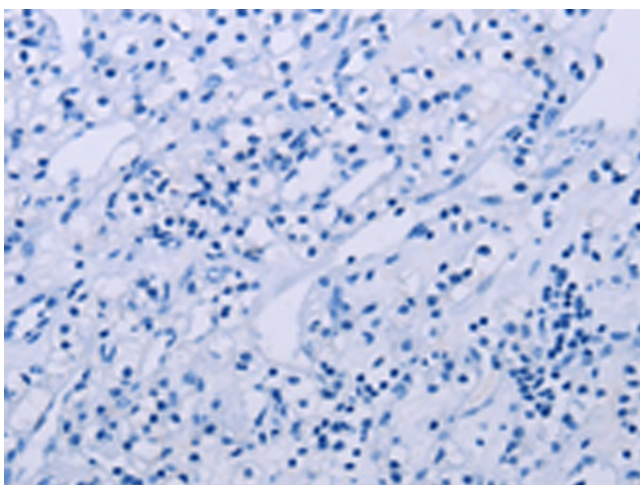
Immunohistochemistry of paraffin-embedded Human lung cancer tissue using TA369179 (KDM3B Antibody) at dilution 1/50 (Original magnification:  $\times 200$ )



Immunohistochemistry of paraffin-embedded Human lung cancer tissue using TA369179 (KDM3B Antibody) at dilution 1/50, treated with fusion protein. (Original magnification:  $\times 200$ )



Immunohistochemistry of paraffin-embedded Human prostate cancer tissue using TA369179 (KDM3B Antibody) at dilution 1/50 (Original magnification:  $\times 200$ )



Immunohistochemistry of paraffin-embedded Human prostate cancer tissue using TA369179 (KDM3B Antibody) at dilution 1/50, treated with fusion protein. (Original magnification:  $\times 200$ )