

Product datasheet for **TA369168**

AKR1C4 Rabbit Polyclonal Antibody

Product data:

Product Type:	Primary Antibodies
Applications:	IHC, WB
Recommended Dilution:	WB: 500-2000 WB positive control: A549 cell lysate and Human fetal liver tissue lysate IHC: 25-100 Positive control: Human liver cancer Predicted cell location: Cytoplasm
Reactivity:	Human
Host:	Rabbit
Isotype:	IgG
Clonality:	Polyclonal
Immunogen:	Full length fusion protein
Formulation:	pH7.4 PBS, 0.05% NaN ₃ , 40% Glycerol
Concentration:	lot specific
Purification:	Antigen affinity purification
Conjugation:	Unconjugated
Storage:	Store at -20°C.
Stability:	1 year
Predicted Protein Size:	37 kDa
Gene Name:	aldo-keto reductase family 1, member C4
Database Link:	Entrez Gene 1109 Human P17516



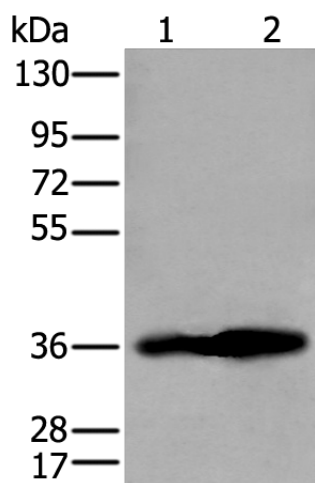
[View online »](#)

Background:

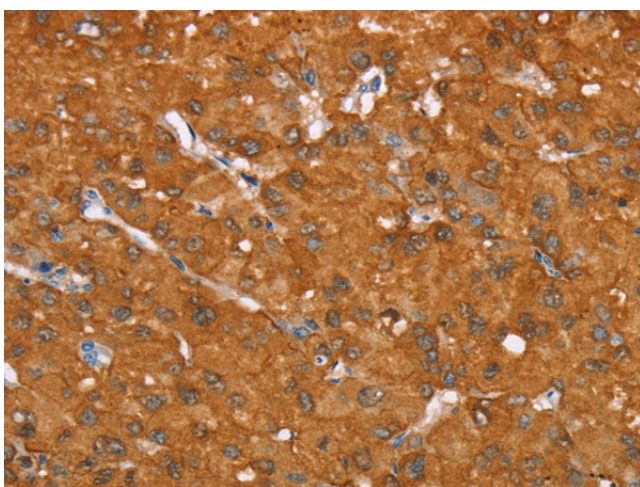
This gene encodes a member of the aldo/keto reductase superfamily, which consists of more than 40 known enzymes and proteins. These enzymes catalyze the conversion of aldehydes and ketones to their corresponding alcohols by utilizing NADH and/or NADPH as cofactors. The enzymes display overlapping but distinct substrate specificity. This enzyme catalyzes the bioreduction of chlordecone, a toxic organochlorine pesticide, to chlordecone alcohol in liver. This gene shares high sequence identity with three other gene members and is clustered with those three genes at chromosome 10p15-p14.

Synonyms:

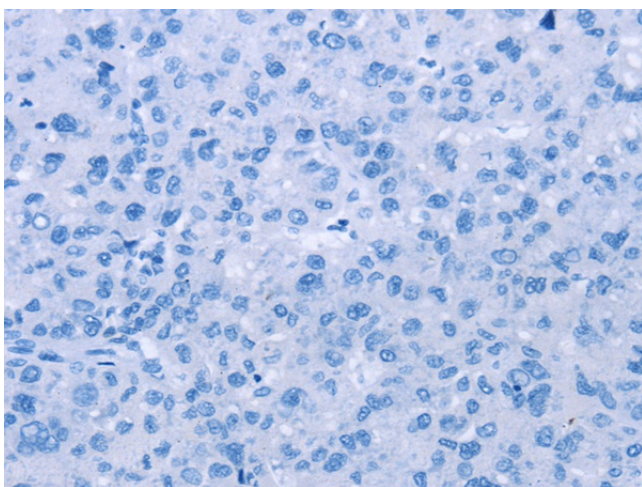
3-alpha-HSD; 3-alpha-HSD1; C11; CDR; CHDR; DD-4; DD4; HAKRA; MGC22581; OTTHUMP00000018997

Product images:

Gel: 8%SDS-PAGE
Lysate: 40 μ g
Lane 1-2: A549 cell lysate and Human fetal liver tissue lysate
Primary antibody: TA369168 (AKR1C4 Antibody) at dilution 1/250
Secondary antibody: Goat anti rabbit IgG at 1/8000 dilution
Exposure time: 3 seconds



Immunohistochemistry of paraffin-embedded Human liver cancer tissue using TA369168 (AKR1C4 Antibody) at dilution 1/25 (Original magnification: \times 200)



Immunohistochemistry of paraffin-embedded Human liver cancer tissue using TA369168 (AKR1C4 Antibody) at dilution 1/25, treated with fusion protein. (Original magnification: $\times 200$)