

Product datasheet for **TA369164S**

HSD17B8 Rabbit Polyclonal Antibody

Product data:

Product Type:	Primary Antibodies
Applications:	IHC, WB
Recommended Dilution:	WB: 500-2000 WB positive control: 293T and K562 cells, human fetal liver tissue IHC: 50-200 Positive control: Human liver cancer Predicted cell location: Cytoplasm
Reactivity:	Human, Mouse, Rat
Host:	Rabbit
Isotype:	IgG
Clonality:	Polyclonal
Immunogen:	Fusion protein of human HSD17B8
Formulation:	pH7.4 PBS, 0.05% NaN ₃ , 40% Glycerol
Purification:	Antigen affinity purification
Conjugation:	Unconjugated
Storage:	Store at -20°C.
Stability:	1 year
Predicted Protein Size:	27 kDa
Gene Name:	hydroxysteroid (17-beta) dehydrogenase 8
Database Link:	Entrez Gene 7923 Human Q92506

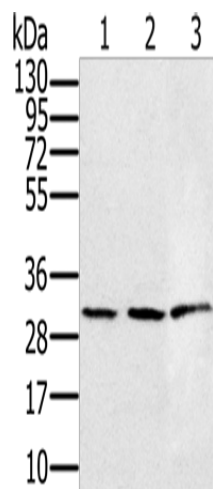
Background: In mice, the Ke6 protein is a 17-beta-hydroxysteroid dehydrogenase that can regulate the concentration of biologically active estrogens and androgens. It is preferentially an oxidative enzyme and inactivates estradiol, testosterone, and dihydrotestosterone. However, the enzyme has some reductive activity and can synthesize estradiol from estrone. The protein encoded by this gene is similar to Ke6 and is a member of the short-chain dehydrogenase superfamily. An alternatively spliced transcript of this gene has been detected, but the full-length nature of this variant has not been determined.



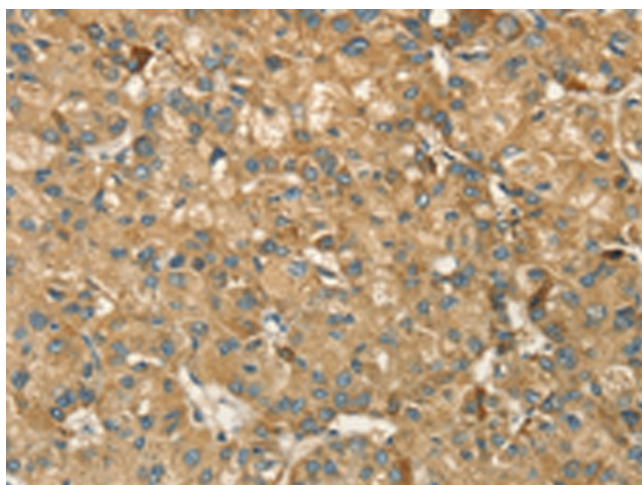
[View online »](#)

Synonyms: D6S2245E; dj1033B10.9; FABG; FABGL; H2-KE6; HKE6; Ke-6; KE6; RING2; SDR30C1

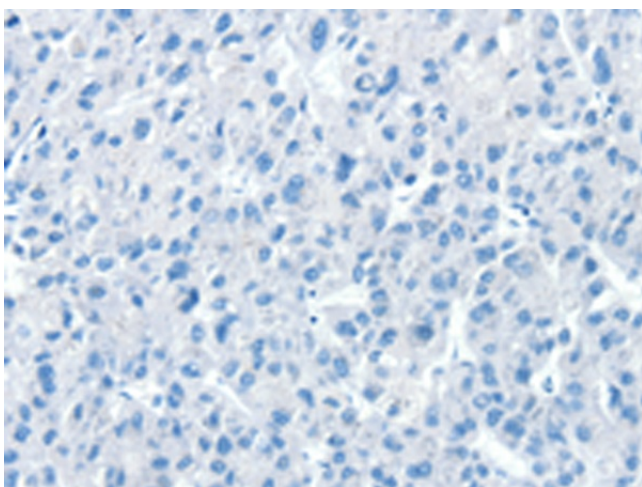
Product images:



Gel: 12%SDS-PAGE
 Lysate: 40 µg
 Lane 1-3: 293T cells
 K562 cells
 human fetal liver tissue
 Primary antibody: [TA369164] (HSD17B8 Antibody) at dilution 1/450
 Secondary antibody: Goat anti rabbit IgG at 1/8000 dilution
 Exposure time: 20 seconds



Immunohistochemistry of paraffin-embedded Human liver cancer tissue using [TA369164] (HSD17B8 Antibody) at dilution 1/55 (Original magnification: ×200)



Immunohistochemistry of paraffin-embedded Human liver cancer tissue using [TA369164] (HSD17B8 Antibody) at dilution 1/55, treated with fusion protein. (Original magnification: $\times 200$)