

Product datasheet for **TA369156**

LIPC Rabbit Polyclonal Antibody

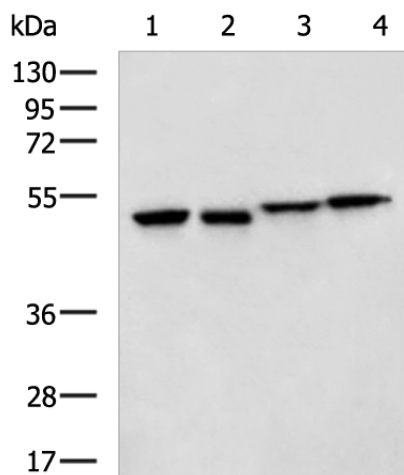
Product data:

Product Type:	Primary Antibodies
Applications:	IHC, WB
Recommended Dilution:	WB: 1000-5000 WB positive control: LOVO, HT-29, K562 and NIH/3T3 cell lysates IHC: 200-300 Positive control: Human esophagus cancer Predicted cell location: Secreted
Reactivity:	Human, Mouse
Host:	Rabbit
Isotype:	IgG
Clonality:	Polyclonal
Immunogen:	Fusion protein of human LIPC
Formulation:	pH7.4 PBS, 0.05% NaN ₃ , 40% Glycerol
Concentration:	lot specific
Purification:	Antigen affinity purification
Conjugation:	Unconjugated
Storage:	Store at -20°C.
Stability:	1 year
Predicted Protein Size:	56 kDa
Gene Name:	lipase C, hepatic type
Database Link:	Entrez Gene 3990 Human P11150
Background:	LIPC encodes hepatic triglyceride lipase, which is expressed in liver. LIPC has the dual functions of triglyceride hydrolase and ligand/bridging factor for receptor-mediated lipoprotein uptake.
Synonyms:	HDLCQ12; HL; HTGL; LIPH

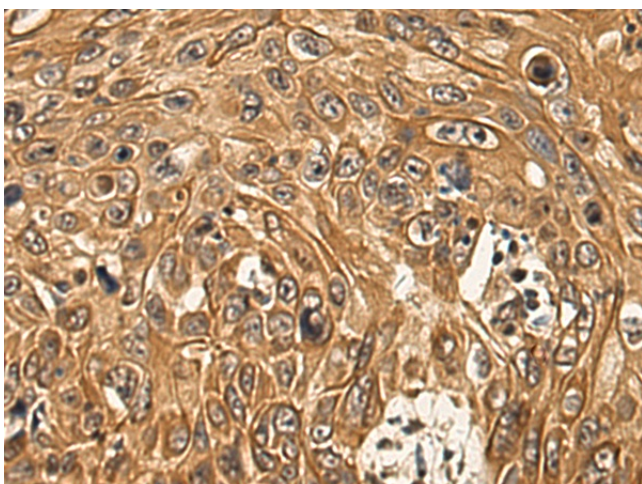


[View online »](#)

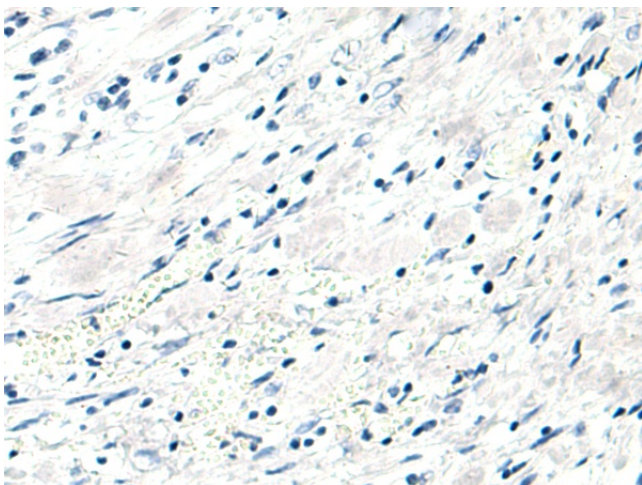
Product images:



Gel: 8%SDS-PAGE
Lysate: 40 μ g
Lane 1-4: LOVO
HT-29
K562 and NIH/3T3 cell lysates
Primary antibody: TA369156 (LIPC Antibody) at dilution 1/1150
Secondary antibody: Goat anti rabbit IgG at 1/5000 dilution
Exposure time: 10 seconds



Immunohistochemistry of paraffin-embedded Human esophagus cancer tissue using TA369156 (LIPC Antibody) at dilution 1/150 (Original magnification: \times 200)



Immunohistochemistry of paraffin-embedded Human esophagus cancer tissue using TA369156 (LIPC Antibody) at dilution 1/150, treated with fusion protein. (Original magnification: ×200)