

Product datasheet for **TA369154S**

glutathione S transferase Omega 1 (GSTO1) Rabbit Polyclonal Antibody

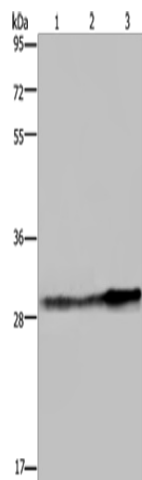
Product data:

Product Type:	Primary Antibodies
Applications:	IHC, WB
Recommended Dilution:	WB: 200-1000 WB positive control: Human hepatocellular carcinoma tissue, Hela cells and human fetal liver tissue IHC: 100-300 Positive control: Human liver cancer Predicted cell location: Cytoplasm and Nucleus
Reactivity:	Human
Host:	Rabbit
Isotype:	IgG
Clonality:	Polyclonal
Immunogen:	Fusion protein of human GSTO1
Formulation:	pH7.4 PBS, 0.05% NaN ₃ , 40% Glycerol
Purification:	Antigen affinity purification
Conjugation:	Unconjugated
Storage:	Store at -20°C.
Stability:	1 year
Predicted Protein Size:	28 kDa
Gene Name:	glutathione S-transferase omega 1
Database Link:	Entrez Gene 9446 Human P78417
Background:	The protein encoded by this gene is an omega class glutathione S-transferase (GST) with glutathione-dependent thiol transferase and dehydroascorbate reductase activities. GSTs are involved in the metabolism of xenobiotics and carcinogens. The encoded protein acts as a homodimer and is found in the cytoplasm. Three transcript variants encoding different isoforms have been found for this gene.
Synonyms:	DKFZp686H13163; GSTTLp28; P28

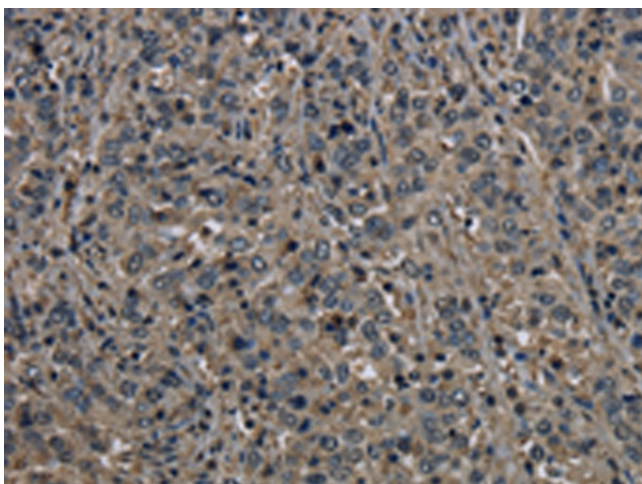


[View online »](#)

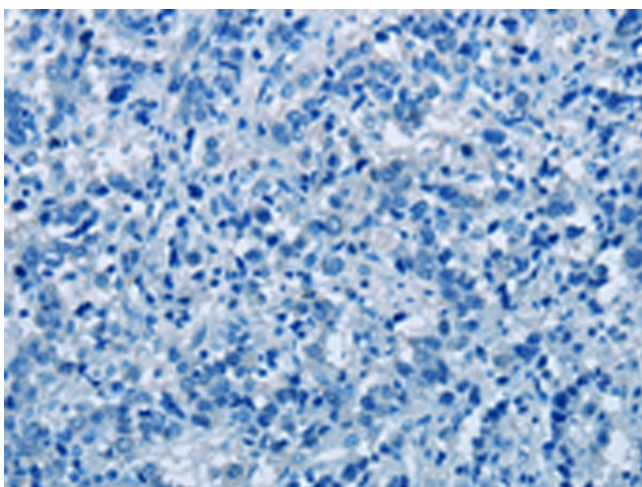
Product images:



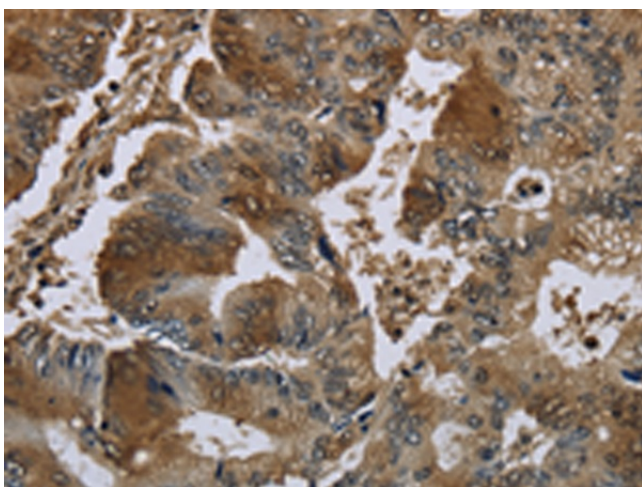
Gel: 8%SDS-PAGE
Lysate: 40 μ g
Lane 1-3: Human hepatocellular carcinoma tissue
HeLa cells
human fetal liver tissue
Primary antibody: [TA369154] (GSTO1 Antibody)
at dilution 1/350
Secondary antibody: Goat anti rabbit IgG at
1/8000 dilution
Exposure time: 10 seconds



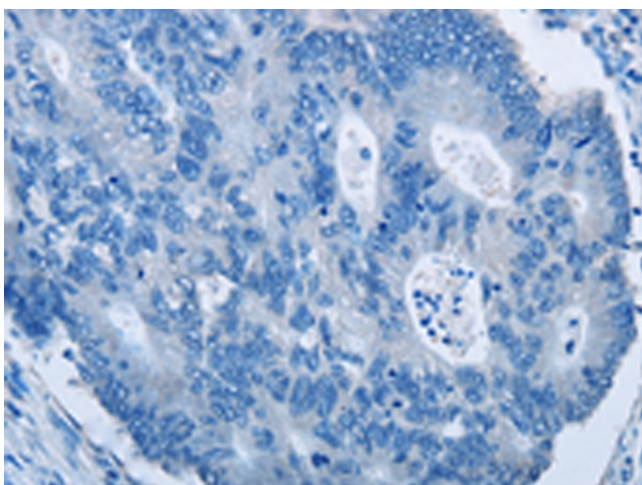
Immunohistochemistry of paraffin-embedded
Human liver cancer tissue using [TA369154]
(GSTO1 Antibody) at dilution 1/60 (Original
magnification: $\times 200$)



Immunohistochemistry of paraffin-embedded Human liver cancer tissue using [TA369154] (GSTO1 Antibody) at dilution 1/60, treated with fusion protein. (Original magnification: $\times 200$)



Immunohistochemistry of paraffin-embedded Human colon cancer tissue using [TA369154] (GSTO1 Antibody) at dilution 1/60 (Original magnification: $\times 200$)



Immunohistochemistry of paraffin-embedded Human colon cancer tissue using [TA369154] (GSTO1 Antibody) at dilution 1/60, treated with fusion protein. (Original magnification: $\times 200$)