

## Product datasheet for **TA369136S**

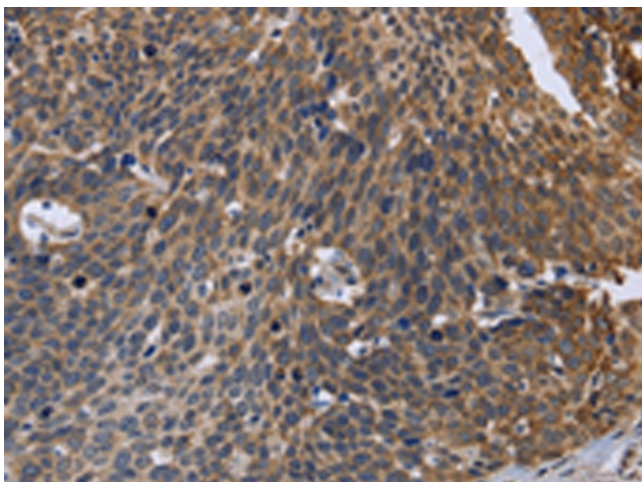
### **GABPB2 Rabbit Polyclonal Antibody**

#### **Product data:**

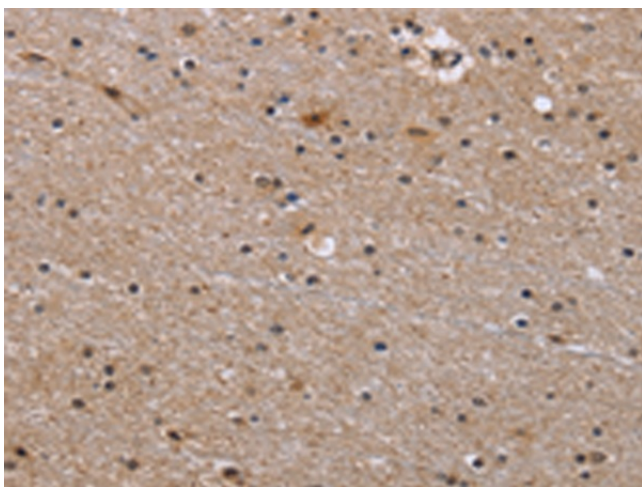
<b>Product Type:</b>	Primary Antibodies
<b>Applications:</b>	IHC
<b>Recommended Dilution:</b>	IHC: 50-200 Positive control: Human cervical cancer Predicted cell location: Cytoplasm
<b>Reactivity:</b>	Human, Mouse
<b>Host:</b>	Rabbit
<b>Isotype:</b>	IgG
<b>Clonality:</b>	Polyclonal
<b>Immunogen:</b>	Fusion protein of human GABPB2
<b>Formulation:</b>	pH7.4 PBS, 0.05% NaN <sub>3</sub> , 40% Glycerol
<b>Purification:</b>	Antigen affinity purification
<b>Conjugation:</b>	Unconjugated
<b>Storage:</b>	Store at -20°C.
<b>Stability:</b>	1 year
<b>Gene Name:</b>	GA binding protein transcription factor beta subunit 2
<b>Database Link:</b>	<a href="#">Entrez Gene 126626 Human Q8TAK5</a>
<b>Background:</b>	GA-binding protein subunit beta-2 is a protein that in humans is encoded by the GABPB2 gene. The GABPB variant containing a C-terminal leucine zipper motif, which they called GABP-beta, can homodimerize and form a transcriptionally active heterotetrameric complex with GABPA. The variant lacking this motif, which they called GABP-gamma, can form heterodimers but cannot form transcriptionally active heterotetramers with GABPA.
<b>Synonyms:</b>	GABPB-2; MGC29891



[View online »](#)

**Product images:**

Immunohistochemistry of paraffin-embedded Human cervical cancer tissue using [TA369136] (GABPB2 Antibody) at dilution 1/30. (Original magnification:  $\times 200$ )



Immunohistochemistry of paraffin-embedded Human brain tissue using [TA369136] (GABPB2 Antibody) at dilution 1/30. (Original magnification:  $\times 200$ )