

## Product datasheet for **TA369131**

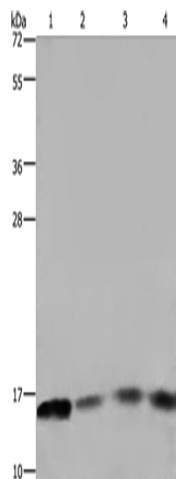
### TTC11 (FIS1) Rabbit Polyclonal Antibody

#### Product data:

Product Type:	Primary Antibodies
Applications:	WB
Recommended Dilution:	WB: 500-2000 WB positive control: Raji and 293T cells, mouse spleen tissue and A431 cells
Reactivity:	Human, Mouse, Rat
Host:	Rabbit
Isotype:	IgG
Clonality:	Polyclonal
Immunogen:	Fusion protein of human FIS1
Formulation:	pH7.4 PBS, 0.05% NaN <sub>3</sub> , 40% Glycerol
Concentration:	lot specific
Purification:	Antigen affinity purification
Conjugation:	Unconjugated
Storage:	Store at -20°C.
Stability:	1 year
Predicted Protein Size:	17 kDa
Gene Name:	fission, mitochondrial 1
Database Link:	<a href="#">Entrez Gene 51024 Human Q9Y3D6</a>
Background:	The balance between fission and fusion regulates the morphology of mitochondria. TTC11 is a component of a mitochondrial complex that promotes mitochondrial fission (James et al., 2003 [PubMed 12783892]).
Synonyms:	CGI-135; hFis1; H_NH0132A01.6; TTC11



[View online »](#)

**Product images:**

Gel: 10%SDS-PAGE

Lysate: 40  $\mu$ g

Lane 1-4: Raji cells

293T cells

mouse spleen tissue

A431 cells

Primary antibody: TA369131 (FIS1 Antibody) at dilution 1/800

Secondary antibody: Goat anti rabbit IgG at 1/8000 dilution

Exposure time: 1 minute