

## Product datasheet for **TA369127**

### FGFR1OP2 Rabbit Polyclonal Antibody

#### Product data:

Product Type:	Primary Antibodies
Applications:	IHC
Recommended Dilution:	IHC: 50-200 Positive control: Human liver cancer Predicted cell location: Cytoplasm
Reactivity:	Human, Mouse, Rat
Host:	Rabbit
Isotype:	IgG
Clonality:	Polyclonal
Immunogen:	Fusion protein of human FGFR1OP2
Formulation:	pH7.4 PBS, 0.05% NaN <sub>3</sub> , 40% Glycerol
Concentration:	lot specific
Purification:	Antigen affinity purification
Conjugation:	Unconjugated
Storage:	Store at -20°C.
Stability:	1 year
Gene Name:	FGFR1 oncogene partner 2
Database Link:	<a href="#">Entrez Gene 26127 Human Q9NVK5</a>



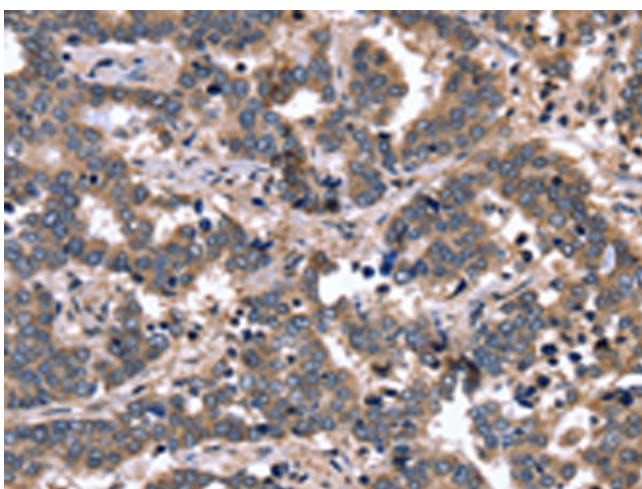
[View online »](#)

**Background:**

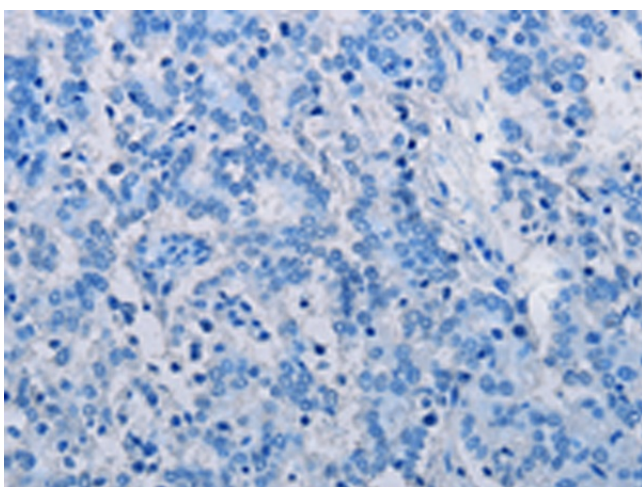
Acidic and basic fibroblast growth factors (FGFs) are members of a family of multifunctional polypeptide growth factors that stimulate proliferation of cells of mesenchymal, epithelial and neuroectodermal origin. Like other growth factors, FGFs act by binding and activating specific cell surface receptors which include the Flg receptor (FGFR-1) and the Bek receptor (FGFR-2), as well as FGFR-3, FGFR-4, FGFR-5 and FGFR-6. FGFR1OP2 (FGFR1 oncogene partner 2), also known as HSPC123, is a 253 amino acid cytoplasmic protein that is expressed in spleen, thymus and bone marrow and is involved in wound healing under normal cellular conditions. Additionally, FGFR1OP2 may also exist as an aberrant fusion protein with Flg and it is thought that the FGFR1OP2-Flg mutant may play a role in the pathogenesis of stem cell myeloproliferative disorder (MPD). Multiple isoforms of FGFR1OP2 exist due to alternative splicing events.

**Synonyms:**

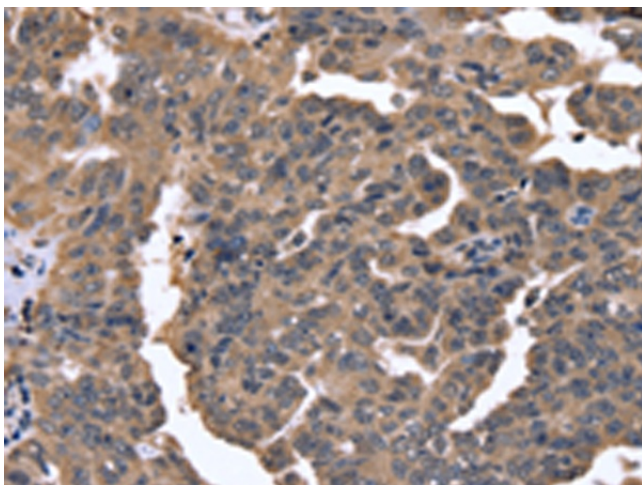
DKFZp564O1863; HSPC123-like

**Product images:**

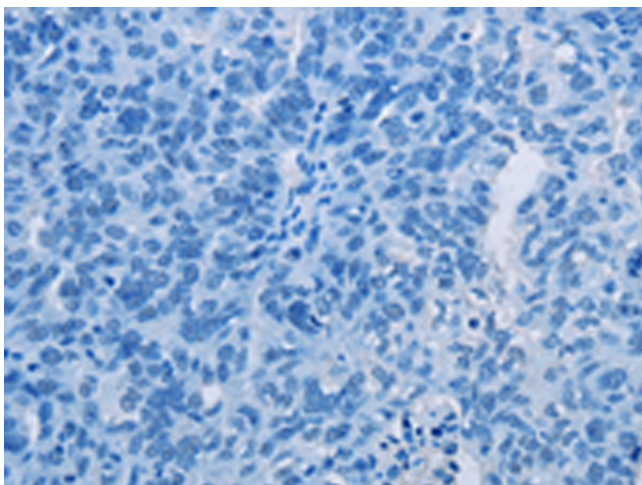
Immunohistochemistry of paraffin-embedded Human liver cancer tissue using TA369127 (FGFR1OP2 Antibody) at dilution 1/40 (Original magnification: x200)



Immunohistochemistry of paraffin-embedded Human liver cancer tissue using TA369127 (FGFR1OP2 Antibody) at dilution 1/40, treated with fusion protein. (Original magnification: x200)



Immunohistochemistry of paraffin-embedded Human ovarian cancer tissue using TA369127 (FGFR1OP2 Antibody) at dilution 1/40 (Original magnification:  $\times 200$ )



Immunohistochemistry of paraffin-embedded Human ovarian cancer tissue using TA369127 (FGFR1OP2 Antibody) at dilution 1/40, treated with fusion protein. (Original magnification:  $\times 200$ )