

Product datasheet for **TA369112**

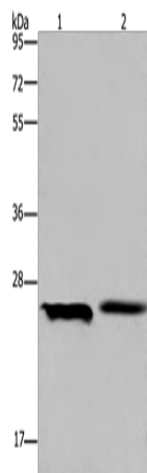
ETHE1 Rabbit Polyclonal Antibody

Product data:

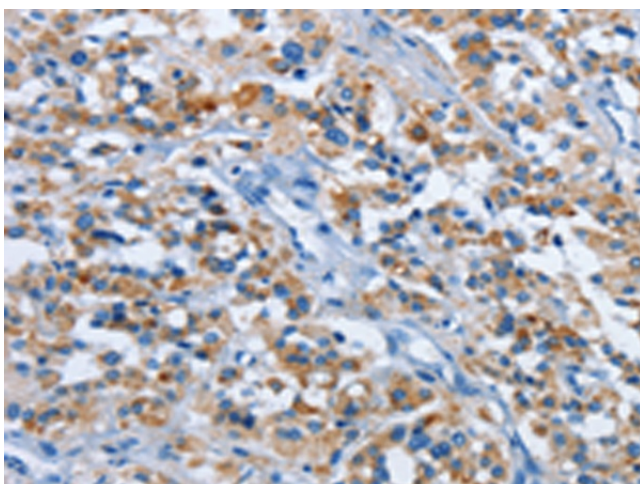
Product Type:	Primary Antibodies
Applications:	IHC, WB
Recommended Dilution:	WB: 200-1000 WB positive control: A549 cells and mouse liver tissue IHC: 25-100 Positive control: Human thyroid cancer Predicted cell location: Cytoplasm
Reactivity:	Human, Mouse
Host:	Rabbit
Isotype:	IgG
Clonality:	Polyclonal
Immunogen:	Fusion protein of human ETHE1
Formulation:	pH7.4 PBS, 0.05% NaN ₃ , 40% Glycerol
Concentration:	lot specific
Purification:	Antigen affinity purification
Conjugation:	Unconjugated
Storage:	Store at -20°C.
Stability:	1 year
Predicted Protein Size:	28 kDa
Gene Name:	ETHE1, persulfide dioxygenase
Database Link:	Entrez Gene 23474 Human O95571
Background:	This gene encodes a sulfur dioxygenase that localizes within the mitochondrial matrix. The enzyme functions in sulfide catabolism. Mutations in this gene result in ethylmalonic encephalopathy.
Synonyms:	D83198; HSCO; YF13H12



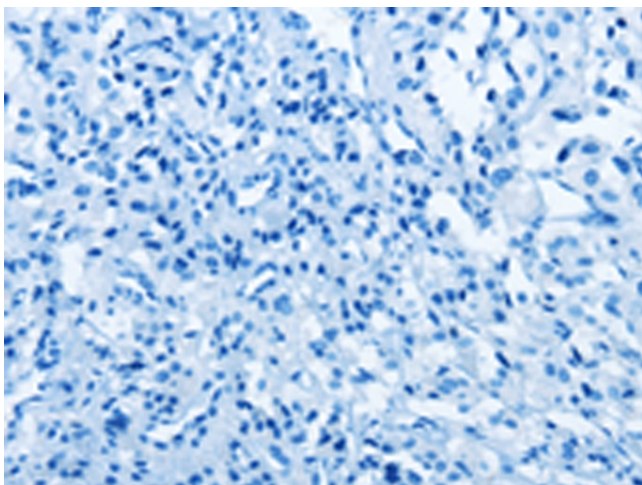
[View online »](#)

Product images:


Gel: 10%SDS-PAGE
 Lysate: 40 µg
 Lane 1-2: A549 cells
 mouse liver tissue
 Primary antibody: TA369112 (ETHE1 Antibody) at
 dilution 1/200
 Secondary antibody: Goat anti rabbit IgG at
 1/8000 dilution
 Exposure time: 40 seconds



Immunohistochemistry of paraffin-embedded
 Human thyroid cancer tissue using TA369112
 (ETHE1 Antibody) at dilution 1/20 (Original
 magnification: x200)



Immunohistochemistry of paraffin-embedded Human thyroid cancer tissue using TA369112 (ETHE1 Antibody) at dilution 1/20, treated with fusion protein. (Original magnification: ×200)