

## Product datasheet for **TA369091S**

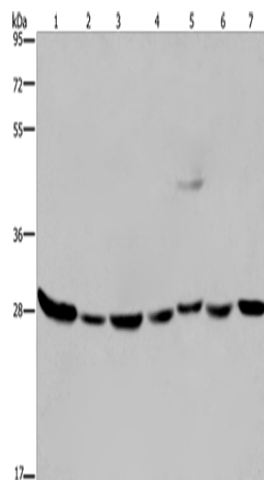
### **ECHS1 Rabbit Polyclonal Antibody**

#### **Product data:**

Product Type:	Primary Antibodies
Applications:	IHC, WB
Recommended Dilution:	WB: 500-2000 WB positive control: Human liver tissue and 293T cells, MCF-7, PC3 and HepG2 cells, human fetal liver tissue and Hela cells IHC: 25-100 Positive control: Human colon cancer Predicted cell location: Cytoplasm
Reactivity:	Human, Mouse, Rat
Host:	Rabbit
Isotype:	IgG
Clonality:	Polyclonal
Immunogen:	Fusion protein of human ECHS1
Formulation:	pH7.4 PBS, 0.05% NaN <sub>3</sub> , 40% Glycerol
Purification:	Antigen affinity purification
Conjugation:	Unconjugated
Storage:	Store at -20°C.
Stability:	1 year
Predicted Protein Size:	31 kDa
Gene Name:	enoyl-CoA hydratase, short chain, 1, mitochondrial
Database Link:	<a href="#">Entrez Gene 1892 Human P30084</a>
Background:	The protein encoded by this gene functions in the second step of the mitochondrial fatty acid beta-oxidation pathway. It catalyzes the hydration of 2-trans-enoyl-coenzyme A (CoA) intermediates to L-3-hydroxyacyl-CoAs. The gene product is a member of the hydratase/isomerase superfamily. It localizes to the mitochondrial matrix. Transcript variants utilizing alternative transcription initiation sites have been described in the literature.
Synonyms:	SCEH



[View online »](#)

**Product images:**

Gel: 8%SDS-PAGE

Lysate: 40  $\mu$ g

Lane 1-7: Human liver tissue

293T cells

MCF7 cells

PC3 cells

HepG2 cells

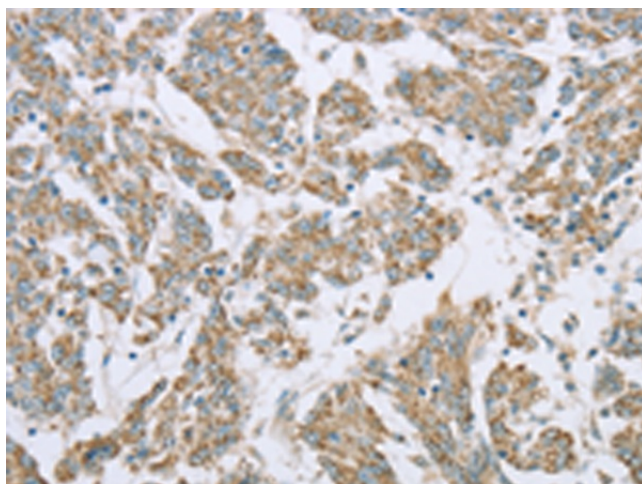
human fetal liver tissue

hela cells

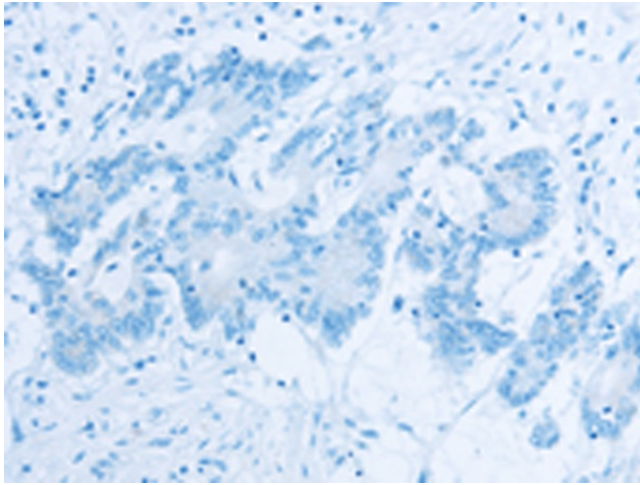
Primary antibody: [TA369091] (ECHS1 Antibody)  
at dilution 1/200

Secondary antibody: Goat anti rabbit IgG at  
1/8000 dilution

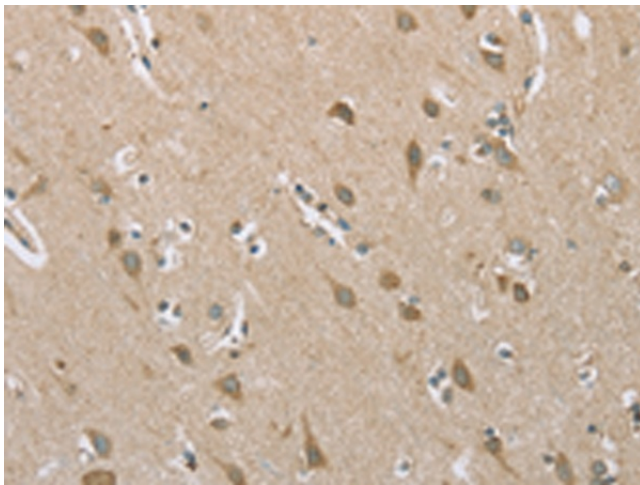
Exposure time: 20 seconds



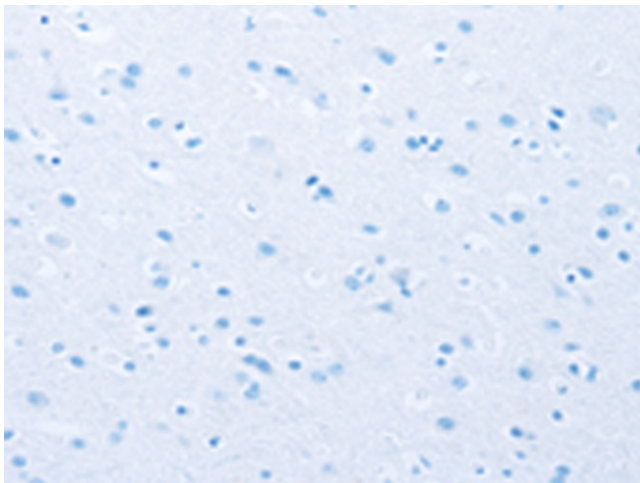
Immunohistochemistry of paraffin-embedded  
Human colon cancer tissue using [TA369091]  
(ECHS1 Antibody) at dilution 1/20 (Original  
magnification:  $\times$ 200)



Immunohistochemistry of paraffin-embedded Human colon cancer tissue using [TA369091] (ECHS1 Antibody) at dilution 1/20, treated with fusion protein. (Original magnification: ×200)



Immunohistochemistry of paraffin-embedded Human brain tissue using [TA369091] (ECHS1 Antibody) at dilution 1/20 (Original magnification: ×200)



Immunohistochemistry of paraffin-embedded Human brain tissue using [TA369091] (ECHS1 Antibody) at dilution 1/20, treated with fusion protein. (Original magnification: ×200)