

## Product datasheet for **TA369086**

### DRP1 (DNM1L) Rabbit Polyclonal Antibody

#### Product data:

Product Type:	Primary Antibodies
Applications:	IHC, WB
Recommended Dilution:	WB: 500-2000 WB positive control: Raji cell and Mouse brain tissue lysates IHC: 200-300 Positive control: Human esophagus cancer Predicted cell location: Cytoplasm
Reactivity:	Human, Mouse
Host:	Rabbit
Isotype:	IgG
Clonality:	Polyclonal
Immunogen:	Fusion protein of human DNM1L
Formulation:	pH7.4 PBS, 0.05% NaN <sub>3</sub> , 40% Glycerol
Concentration:	lot specific
Purification:	Antigen affinity purification
Conjugation:	Unconjugated
Storage:	Store at -20°C.
Stability:	1 year
Predicted Protein Size:	82 kDa
Gene Name:	dynamin 1-like
Database Link:	<a href="#">Entrez Gene 10059 Human O00429</a>



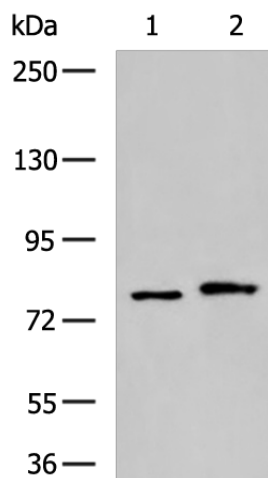
[View online »](#)

**Background:**

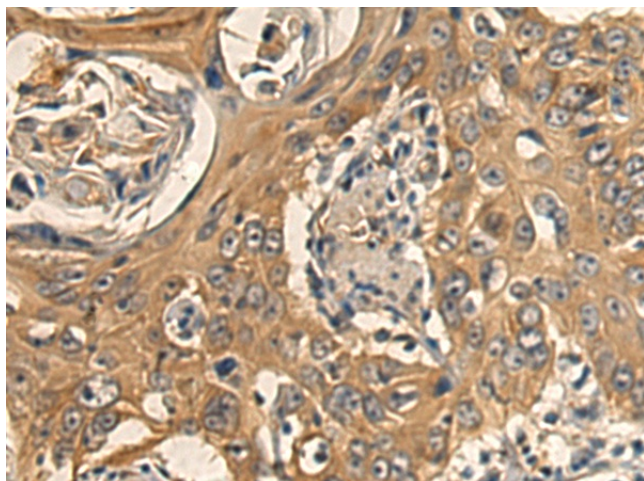
This gene encodes a member of the dynamin superfamily of GTPases. The encoded protein mediates mitochondrial and peroxisomal division, and is involved in developmentally regulated apoptosis and programmed necrosis. Dysfunction of this gene is implicated in several neurological disorders, including Alzheimer's disease. Mutations in this gene are associated with the autosomal dominant disorder, encephalopathy, lethal, due to defective mitochondrial and peroxisomal fission (EMPF). Alternative splicing results in multiple transcript variants encoding different isoforms. [provided by RefSeq, Jun 2013]

**Synonyms:**

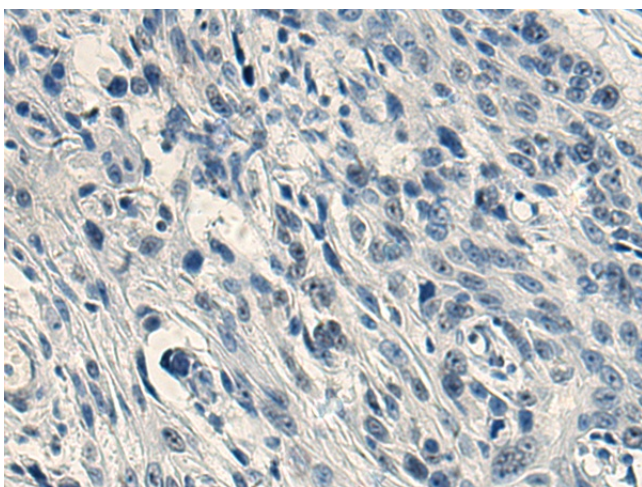
DLP1; DRP1; DVLP; DYMPLE; DYNIV-11; FLJ41912; HDYNIV; VPS1

**Product images:**

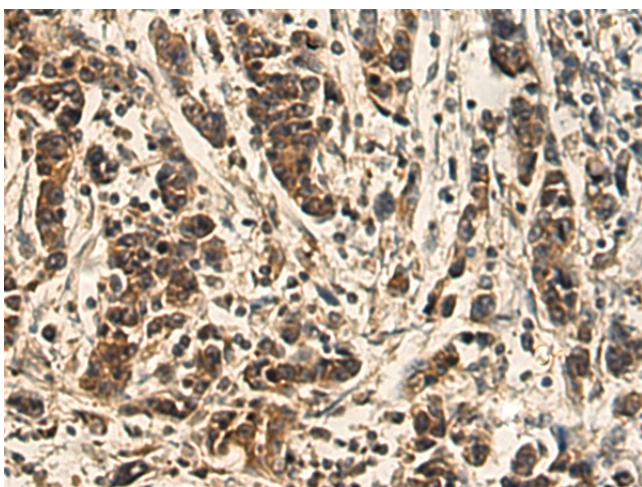
Gel: 6%SDS-PAGE  
Lysate: 40  $\mu$ g  
Lane 1-2: Raji cell and Mouse brain tissue lysates  
Primary antibody: TA369086 (DNM1L Antibody) at dilution 1/800  
Secondary antibody: Goat anti rabbit IgG at 1/5000 dilution  
Exposure time: 1 minute



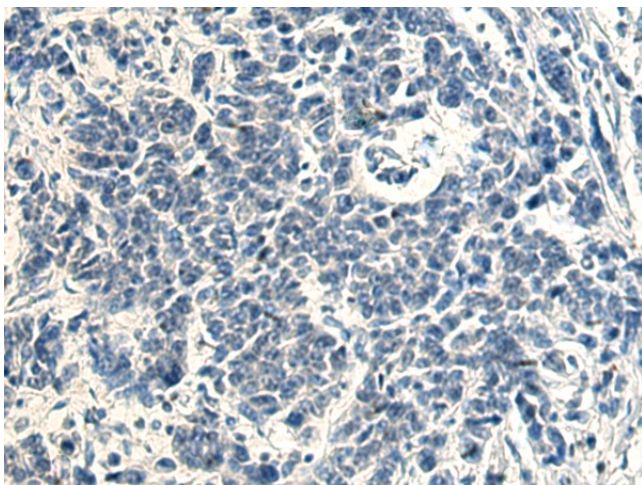
Immunohistochemistry of paraffin-embedded Human esophagus cancer tissue using TA369086 (DNM1L Antibody) at dilution 1/160 (Original magnification:  $\times 200$ )



Immunohistochemistry of paraffin-embedded Human esophagus cancer tissue using TA369086 (DNM1L Antibody) at dilution 1/160, treated with fusion protein. (Original magnification:  $\times 200$ )



Immunohistochemistry of paraffin-embedded Human colorectal cancer tissue using TA369086 (DNM1L Antibody) at dilution 1/160 (Original magnification:  $\times 200$ )



Immunohistochemistry of paraffin-embedded Human colorectal cancer tissue using TA369086 (DNM1L Antibody) at dilution 1/160, treated with fusion protein. (Original magnification:  $\times 200$ )