

## Product datasheet for **TA369085**

### DNase gamma (DNASE1L3) Rabbit Polyclonal Antibody

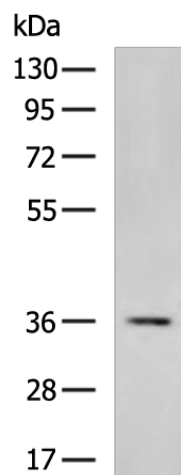
#### Product data:

Product Type:	Primary Antibodies
Applications:	WB
Recommended Dilution:	WB: 200-1000 WB positive control: HepG2 cell lysate
Reactivity:	Human, Mouse, Rat
Host:	Rabbit
Isotype:	IgG
Clonality:	Polyclonal
Immunogen:	Fusion protein of human DNASE1L3
Formulation:	pH7.4 PBS, 0.05% NaN <sub>3</sub> , 40% Glycerol
Concentration:	lot specific
Purification:	Antigen affinity purification
Conjugation:	Unconjugated
Storage:	Store at -20°C.
Stability:	1 year
Predicted Protein Size:	36 kDa
Gene Name:	deoxyribonuclease I like 3
Database Link:	<a href="#">Entrez Gene 1776 Human Q13609</a>
Background:	This gene encodes a member of the deoxyribonuclease I family. The encoded protein hydrolyzes DNA, is not inhibited by actin, and mediates the breakdown of DNA during apoptosis. Mutations in this gene are a cause of systemic lupus erythematosus-16. Alternatively spliced transcript variants encoding multiple isoforms have been observed for this gene.
Synonyms:	DHP2; DNAS1L3; LS-DNase; LSD



[View online »](#)

## Product images:



Gel: 8%SDS-PAGE

Lysate: 40  $\mu$ g

Lane: HepG2 cell lysate

Primary antibody: TA369085 (DNASE1L3

Antibody) at dilution 1/400

Secondary antibody: Goat anti rabbit IgG at  
1/5000 dilution

Exposure time: 1 minute