

## Product datasheet for **TA369080S**

### DDX43 Rabbit Polyclonal Antibody

#### Product data:

Product Type:	Primary Antibodies
Applications:	IHC, WB
Recommended Dilution:	WB: 200-1000 WB positive control: HepG2 cells IHC: 50-200 Positive control: Human thyroid cancer Predicted cell location: Cytoplasm or Nucleus
Reactivity:	Human
Host:	Rabbit
Isotype:	IgG
Clonality:	Polyclonal
Immunogen:	Fusion protein of human DDX43
Formulation:	pH7.4 PBS, 0.05% NaN <sub>3</sub> , 40% Glycerol
Purification:	Antigen affinity purification
Conjugation:	Unconjugated
Storage:	Store at -20°C.
Stability:	1 year
Predicted Protein Size:	73 kDa
Gene Name:	DEAD-box helicase 43
Database Link:	<a href="#">Entrez Gene 55510 Human Q9NXZ2</a>



[View online »](#)

**Background:**

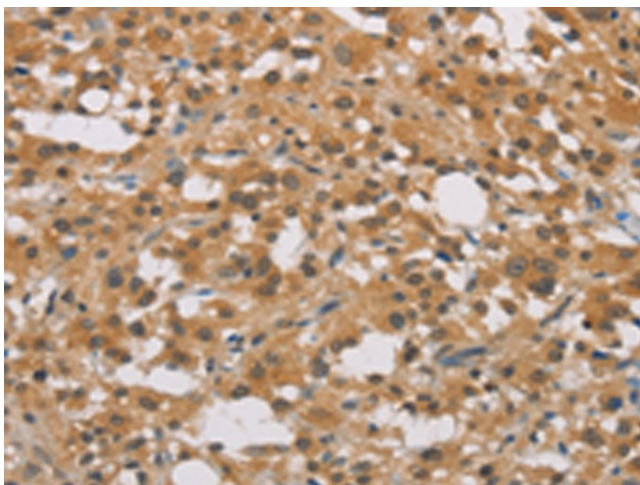
DEAD-box proteins, characterized by the conserved motif Asp-Glu-Ala-Asp, are putative RNA helicases implicated in several cellular processes involving modifications of RNA secondary structure and ribosome/spliceosome assembly. Based on their distribution patterns, some members of this family may be involved in embryogenesis, spermatogenesis and cellular growth and division. DDX43 (DEAD (Asp-Glu-Ala-Asp) box polypeptide 43), also known as CT13 or HAGE, is a 648 amino acid protein that contains one KH domain, one helicase C-terminal domain and one helicase ATP-binding domain and belongs to the DEAD-box family. Expressed in testis and present at abnormally high levels in a variety of tumors, DDX43 is thought to function as an ATP-dependent RNA helicase that may play a role tumor transformation and metastasis.

**Synonyms:**

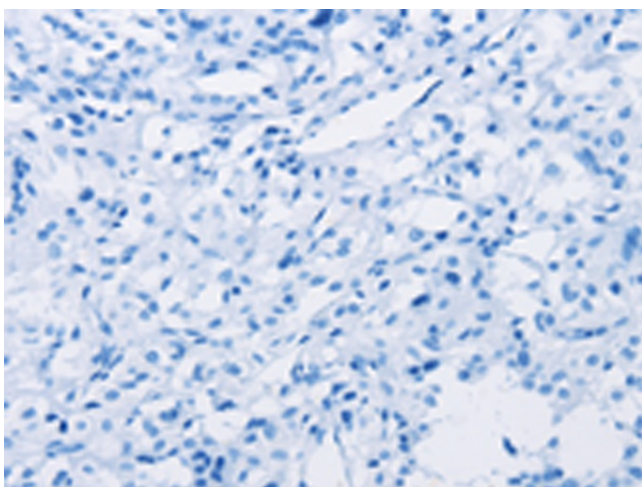
CT13; DKFZp434H2114; HAGE

**Product images:**

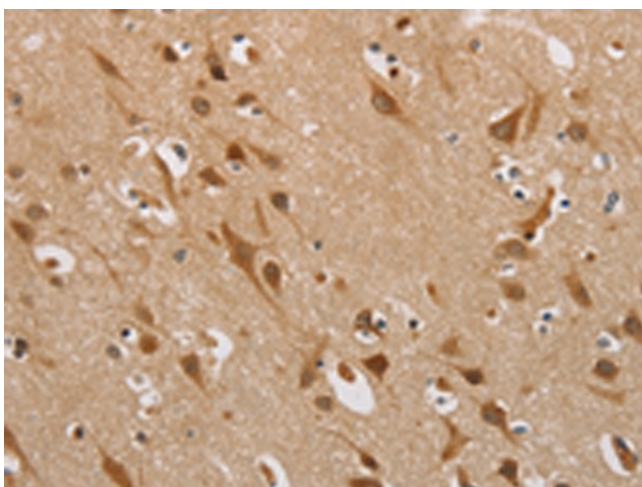

Gel: 8%SDS-PAGE  
Lysate: 40 µg  
Lane: HepG2 cells  
Primary antibody: [TA369080] (DDX43 Antibody) at dilution 1/200  
Secondary antibody: Goat anti rabbit IgG at 1/8000 dilution  
Exposure time: 3 minutes



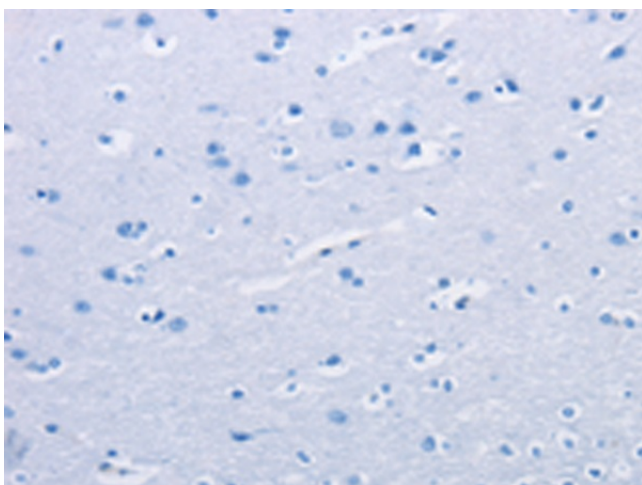
Immunohistochemistry of paraffin-embedded Human thyroid cancer tissue using [TA369080] (DDX43 Antibody) at dilution 1/40 (Original magnification: ×200)



Immunohistochemistry of paraffin-embedded Human thyroid cancer tissue using [TA369080] (DDX43 Antibody) at dilution 1/40, treated with fusion protein. (Original magnification: ×200)



Immunohistochemistry of paraffin-embedded Human brain tissue using [TA369080] (DDX43 Antibody) at dilution 1/40 (Original magnification: ×200)



Immunohistochemistry of paraffin-embedded Human brain tissue using [TA369080] (DDX43 Antibody) at dilution 1/40, treated with fusion protein. (Original magnification: ×200)