

Product datasheet for **TA369070**

DATF1 (DIDO1) Rabbit Polyclonal Antibody

Product data:

| | |
|-----------------------|---|
| Product Type: | Primary Antibodies |
| Applications: | IHC |
| Recommended Dilution: | IHC: 100-300 Positive control: Human thyroid cancer Predicted cell location: Cytoplasm or Nucleus |
| Reactivity: | Human |
| Host: | Rabbit |
| Isotype: | IgG |
| Clonality: | Polyclonal |
| Immunogen: | Fusion protein of human DIDO1 |
| Formulation: | pH7.4 PBS, 0.05% NaN ₃ , 40% Glycerol |
| Concentration: | lot specific |
| Purification: | Antigen affinity purification |
| Conjugation: | Unconjugated |
| Storage: | Store at -20°C. |
| Stability: | 1 year |
| Gene Name: | death inducer-obliterator 1 |
| Database Link: | Entrez Gene 11083 Human Q9BTC0 |

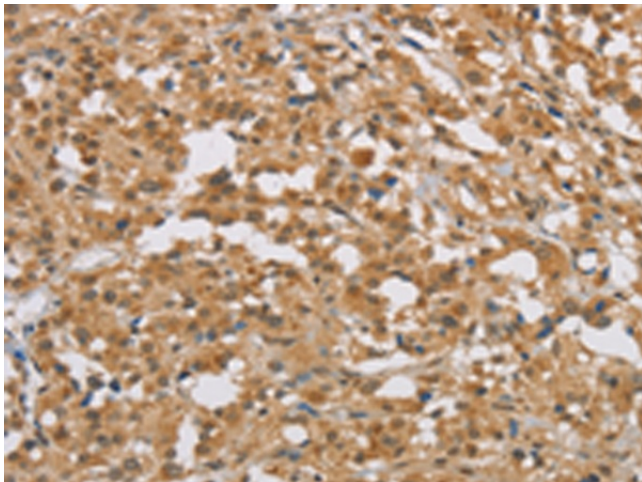
Background: Apoptosis, a major form of cell death, is an efficient mechanism for eliminating unwanted cells and is of central importance for development and homeostasis in metazoan animals. In mice, the death inducer-obliterator-1 gene is upregulated by apoptotic signals and encodes a cytoplasmic protein that translocates to the nucleus upon apoptotic signal activation. When overexpressed, the mouse protein induced apoptosis in cell lines growing in vitro. This gene is similar to the mouse gene and therefore is thought to be involved in apoptosis. Alternatively spliced transcripts have been found for this gene, encoding multiple isoforms.



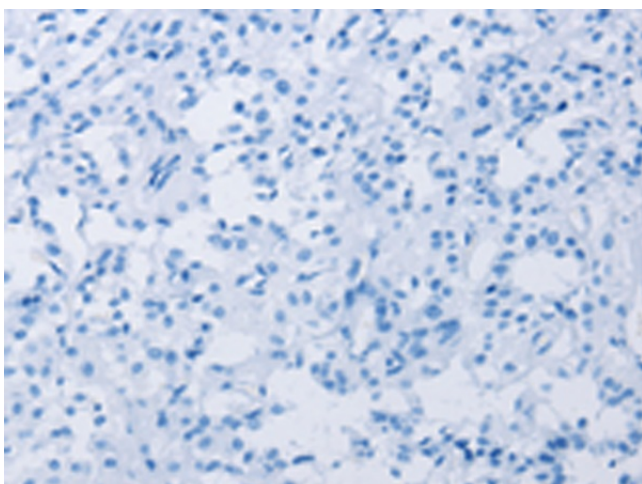
[View online »](#)

Synonyms:

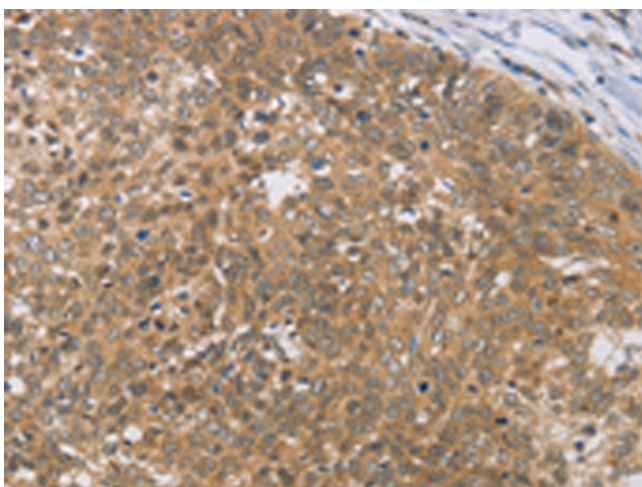
BYE1; C20orf158; DATF-1; DATF1; DIDO2; DIDO3; DIO-1; DIO1; dj885L7.8; DKFZp434P1115; FLJ11265; hDido1; KIAA0333; MGC16140; OTTHUMP00000031519; OTTHUMP00000031521; OTTHUMP00000031522

Product images:

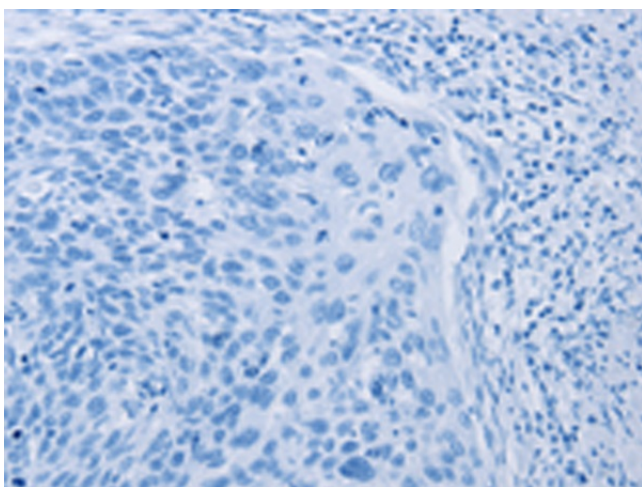
Immunohistochemistry of paraffin-embedded Human thyroid cancer tissue using TA369070 (DIDO1 Antibody) at dilution 1/50 (Original magnification: x200)



Immunohistochemistry of paraffin-embedded Human thyroid cancer tissue using TA369070 (DIDO1 Antibody) at dilution 1/50, treated with fusion protein. (Original magnification: x200)



Immunohistochemistry of paraffin-embedded Human cervical cancer tissue using TA369070 (DIDO1 Antibody) at dilution 1/50 (Original magnification: $\times 200$)



Immunohistochemistry of paraffin-embedded Human cervical cancer tissue using TA369070 (DIDO1 Antibody) at dilution 1/50, treated with fusion protein. (Original magnification: $\times 200$)