

Product datasheet for **TA369056**

CtIP (RBBP8) Rabbit Polyclonal Antibody

Product data:

Product Type:	Primary Antibodies
Applications:	IHC, WB
Recommended Dilution:	WB: 200-1000 WB positive control: Hepg2,Hela and 231 cell IHC: 100-300 Positive control: Human thyroid cancer Predicted cell location: cytoplasm or nucleus
Reactivity:	Human, Mouse, Rat
Host:	Rabbit
Isotype:	IgG
Clonality:	Polyclonal
Immunogen:	Fusion protein of human RBBP8
Formulation:	pH7.4 PBS, 0.05% NaN ₃ , 40% Glycerol
Concentration:	lot specific
Purification:	Antigen affinity purification
Conjugation:	Unconjugated
Storage:	Store at -20°C.
Stability:	1 year
Predicted Protein Size:	102 kDa
Gene Name:	RB binding protein 8, endonuclease
Database Link:	Entrez Gene 5932 Human Q99708

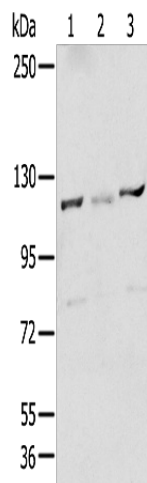
Background: The protein encoded by this gene is a ubiquitously expressed nuclear protein. It is found among several proteins that bind directly to retinoblastoma protein, which regulates cell proliferation. This protein complexes with transcriptional co-repressor CTBP. It is also associated with BRCA1 and is thought to modulate the functions of BRCA1 in transcriptional regulation, DNA repair, and/or cell cycle checkpoint control. It is suggested that this gene may itself be a tumor suppressor acting in the same pathway as BRCA1.



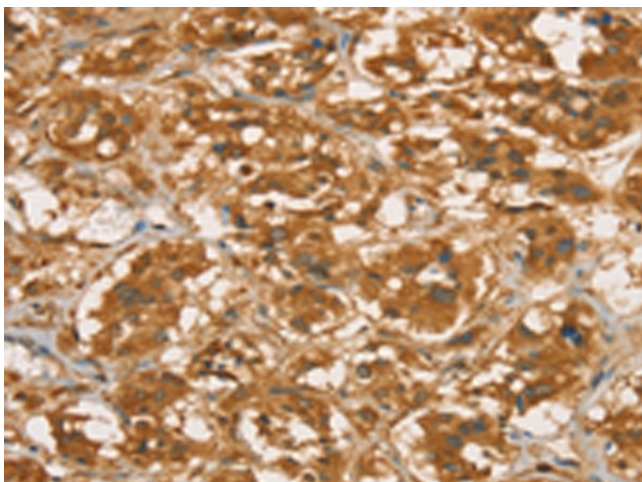
[View online »](#)

Synonyms: CtIP; RBBP-8; RIM

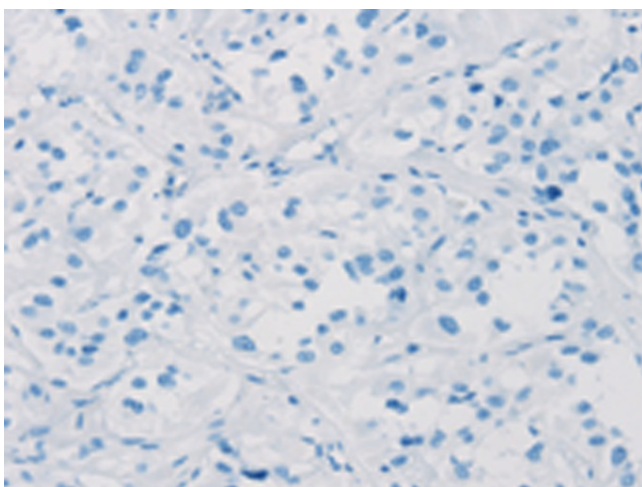
Product images:



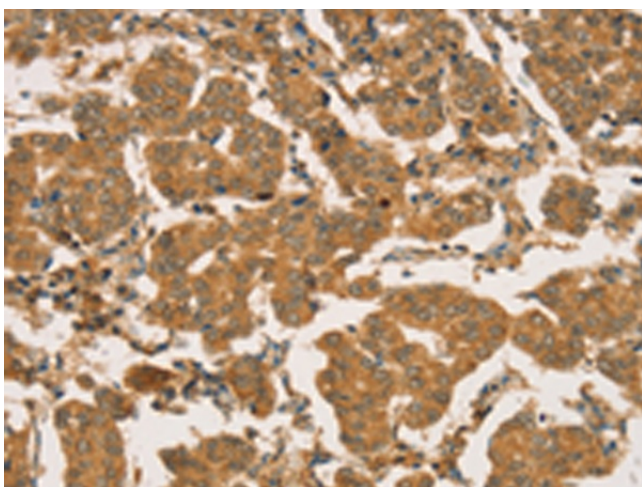
Gel: 6%SDS-PAGE
Lysate: 40 μ g
Lane 1-3: HepG2
Hela and 231 cell
Primary antibody: TA369056 (RBBP8 Antibody) at dilution 1/300
Secondary antibody: Goat anti rabbit IgG at 1/8000 dilution
Exposure time: 2 seconds



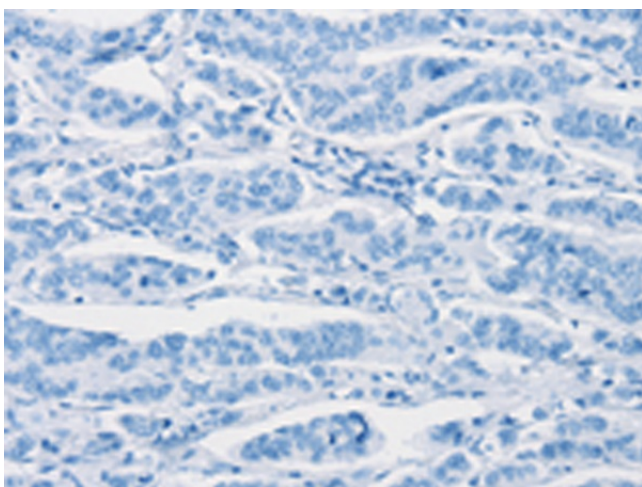
Immunohistochemistry of paraffin-embedded Human thyroid cancer tissue using TA369056 (RBBP8 Antibody) at dilution 1/45 (Original magnification: \times 200)



Immunohistochemistry of paraffin-embedded Human thyroid cancer tissue using TA369056 (RBBP8 Antibody) at dilution 1/45, treated with fusion protein. (Original magnification: $\times 200$)



Immunohistochemistry of paraffin-embedded Human breast cancer tissue using TA369056 (RBBP8 Antibody) at dilution 1/45 (Original magnification: $\times 200$)



Immunohistochemistry of paraffin-embedded Human breast cancer tissue using TA369056 (RBBP8 Antibody) at dilution 1/45, treated with fusion protein. (Original magnification: $\times 200$)