

Product datasheet for **TA369053S**

CRELD2 Rabbit Polyclonal Antibody

Product data:

Product Type:	Primary Antibodies
Applications:	IHC, WB
Recommended Dilution:	WB: 500-2000 WB positive control: Human fetal liver tissue IHC: 50-200 Positive control: Human cervical cancer Predicted cell location: Cytoplasm
Reactivity:	Human
Host:	Rabbit
Isotype:	IgG
Clonality:	Polyclonal
Immunogen:	Fusion protein of human CRELD2
Formulation:	pH7.4 PBS, 0.05% NaN ₃ , 40% Glycerol
Purification:	Antigen affinity purification
Conjugation:	Unconjugated
Storage:	Store at -20°C.
Stability:	1 year
Predicted Protein Size:	38 kDa
Gene Name:	cysteine rich with EGF like domains 2
Database Link:	Entrez Gene 79174 Human Q6UXH1

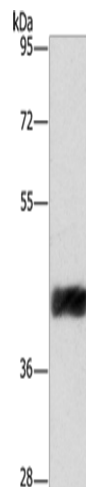
Background: CRELD2 (cysteine-rich with EGF-like domains 2) is a 353 amino acid protein that is ubiquitously expressed and contains two FU domains and two EGF-like domains. Localized to the endoplasmic reticulum and secreted into the cell, CRELD2 interacts with AChR α 4, possibly regulating its transport. Human CRELD2 shares 69% amino acid identity with its mouse counterpart, suggesting a conserved role between species. Multiple isoforms of CRELD2 exist due to alternative splicing events. The gene encoding CRELD2 maps to human chromosome 22, which houses over 500 genes and is the second smallest human chromosome.



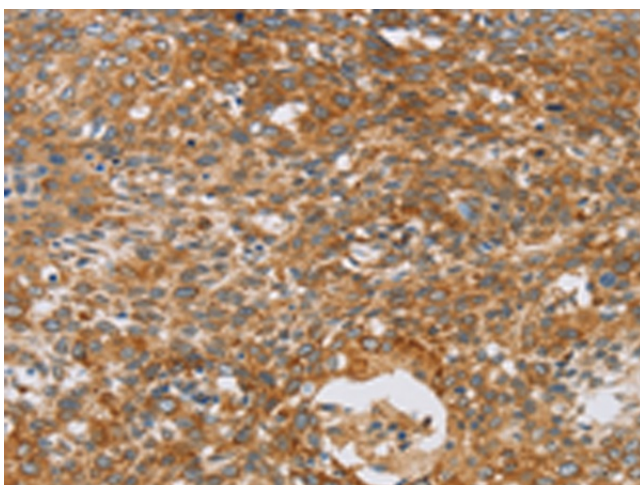
[View online »](#)

Synonyms: DKFZp667O055; MGC11256

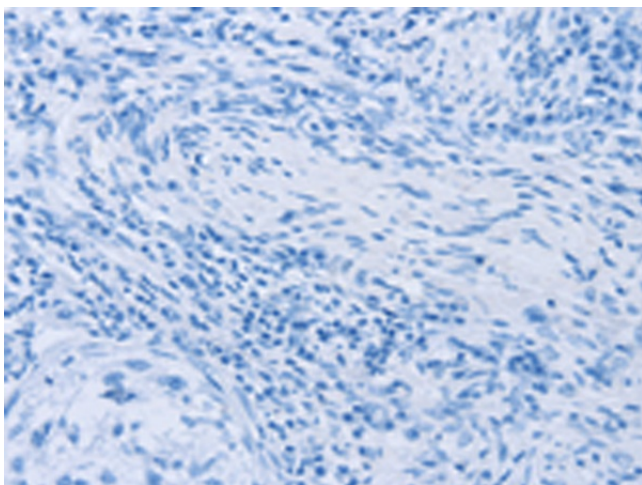
Product images:



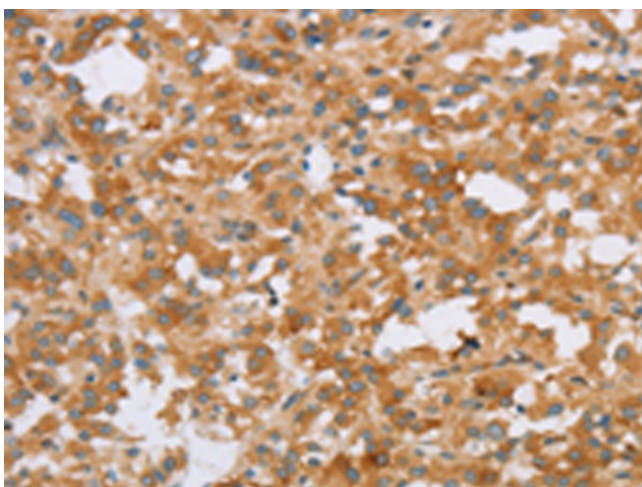
Gel: 8%SDS-PAGE
Lysate: 40 µg
Lane: Human fetal liver tissue
Primary antibody: [TA369053] (CRELD2 Antibody) at dilution 1/421
Secondary antibody: Goat anti rabbit IgG at 1/8000 dilution
Exposure time: 2 minutes



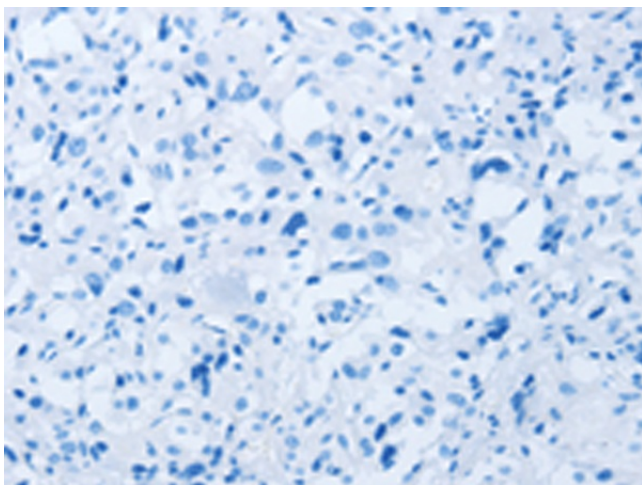
Immunohistochemistry of paraffin-embedded Human cervical cancer tissue using [TA369053] (CRELD2 Antibody) at dilution 1/40 (Original magnification: ×200)



Immunohistochemistry of paraffin-embedded Human cervical cancer tissue using [TA369053] (CRELD2 Antibody) at dilution 1/40, treated with fusion protein. (Original magnification: $\times 200$)



Immunohistochemistry of paraffin-embedded Human thyroid cancer tissue using [TA369053] (CRELD2 Antibody) at dilution 1/40 (Original magnification: $\times 200$)



Immunohistochemistry of paraffin-embedded Human thyroid cancer tissue using [TA369053] (CRELD2 Antibody) at dilution 1/40, treated with fusion protein. (Original magnification: $\times 200$)