

Product datasheet for **TA369037**

CEP55 Rabbit Polyclonal Antibody

Product data:

Product Type:	Primary Antibodies
Applications:	WB
Recommended Dilution:	WB: 200-1000 WB positive control: Mouse intestinum tenue tissue, human colon cancer and testis tissue
Reactivity:	Human, Mouse, Rat
Host:	Rabbit
Isotype:	IgG
Clonality:	Polyclonal
Immunogen:	Fusion protein of human CEP55
Formulation:	pH7.4 PBS, 0.05% NaN ₃ , 40% Glycerol
Concentration:	lot specific
Purification:	Antigen affinity purification
Conjugation:	Unconjugated
Storage:	Store at -20°C.
Stability:	1 year
Predicted Protein Size:	54 kDa
Gene Name:	centrosomal protein 55
Database Link:	Entrez Gene 55165 Human Q53EZ4

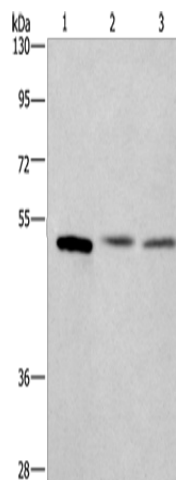
Background: Centrosomal protein of 55 kDa is a protein that in humans is encoded by the CEP55 gene. CEP55 is a mitotic phosphoprotein that plays a key role in cytokinesis, the final stage of cell division. Interacts (phosphorylated on Ser-425 and Ser-428) with PLK1. Interacts with AKAP9; the interaction occurs in interphase and is lost upon mitotic entry. Interacts with PCNT; the interaction occurs in interphase and is lost upon mitotic entry. Interacts with PDCD6IP; the interaction is direct; CEP55 binds PDCD6IP in a 2:1 stoichiometry; PDCD6IP competes with TSG101 for the same binding site.

Synonyms: C10orf3; CT111; FLJ10540; URCC6



[View online »](#)

Product images:



Gel: 10%SDS-PAGE

Lysate: 40 μ g

Lane 1-3: Mouse intestine tissue
human colon cancer tissue

Human testis tissue

Primary antibody: TA369037 (CEP55 Antibody) at
dilution 1/350

Secondary antibody: Goat anti rabbit IgG at
1/8000 dilution

Exposure time: 1 minute