

Product datasheet for **TA369022S**

CD105 (ENG) Rabbit Polyclonal Antibody

Product data:

Product Type:	Primary Antibodies
Applications:	IHC, WB
Recommended Dilution:	WB: 500-2000 WB positive control: HepG2, Jurkat and MCF-7 cell lysates IHC: 100-200 Positive control: Human liver cancer Predicted cell location: Cytoplasm
Reactivity:	Human
Host:	Rabbit
Isotype:	IgG
Clonality:	Polyclonal
Immunogen:	Fusion protein of human ENG
Formulation:	pH7.4 PBS, 0.05% NaN ₃ , 40% Glycerol
Purification:	Antigen affinity purification
Conjugation:	Unconjugated
Storage:	Store at -20°C.
Stability:	1 year
Predicted Protein Size:	71 kDa
Gene Name:	endoglin
Database Link:	Entrez Gene 2022 Human P17813

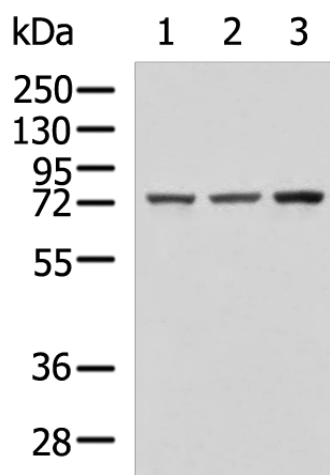
Background: This gene encodes a homodimeric transmembrane protein which is a major glycoprotein of the vascular endothelium. This protein is a component of the transforming growth factor beta receptor complex and it binds to the beta1 and beta3 peptides with high affinity. Mutations in this gene cause hereditary hemorrhagic telangiectasia, also known as Osler-Rendu-Weber syndrome 1, an autosomal dominant multisystemic vascular dysplasia. This gene may also be involved in preeclampsia and several types of cancer. Alternatively spliced transcript variants encoding different isoforms have been found for this gene.



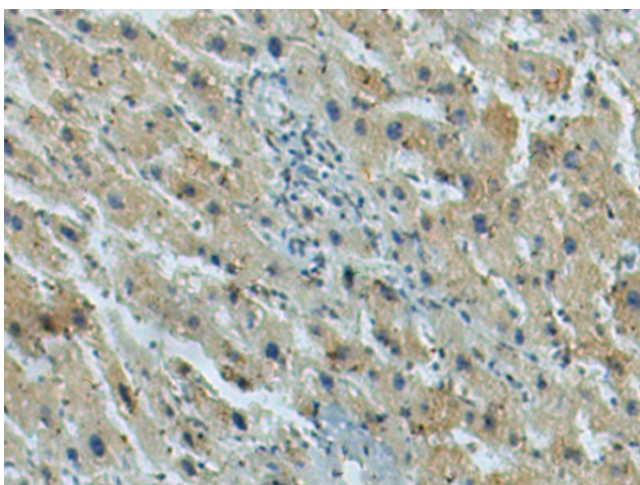
[View online »](#)

Synonyms: CD105; END; endoglin; FLJ41744; HHT1; ORW; ORW1

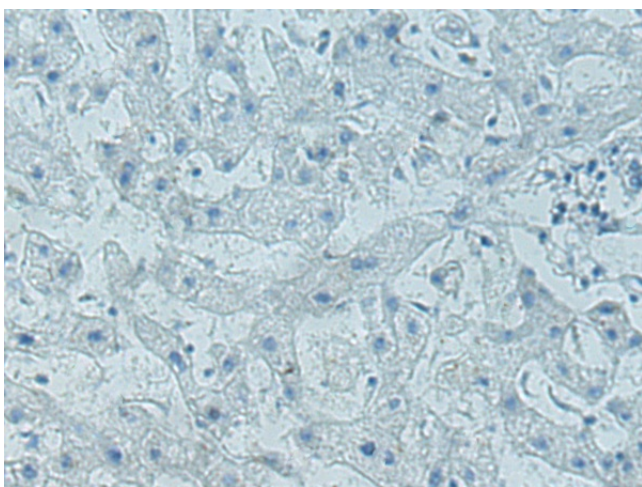
Product images:



Gel: 8%SDS-PAGE
 Lysate: 40 µg
 Lane 1-3: HepG2
 Jurkat and MCF-7 cell lysates
 Primary antibody: [TA369022] (ENG Antibody) at dilution 1/650
 Secondary antibody: Goat anti rabbit IgG at 1/5000 dilution
 Exposure time: 1 minute



Immunohistochemistry of paraffin-embedded Human liver cancer tissue using [TA369022] (ENG Antibody) at dilution 1/80 (Original magnification: ×200)



Immunohistochemistry of paraffin-embedded Human liver cancer tissue using [TA369022] (ENG Antibody) at dilution 1/80, treated with fusion protein. (Original magnification: $\times 200$)