

## Product datasheet for **TA369019**

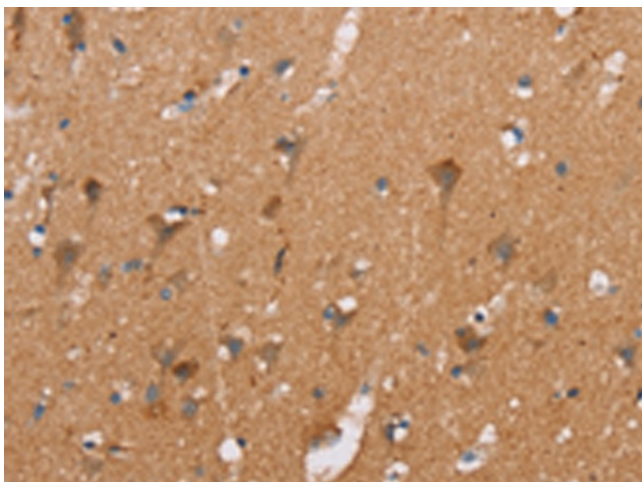
### CASC3 Rabbit Polyclonal Antibody

#### Product data:

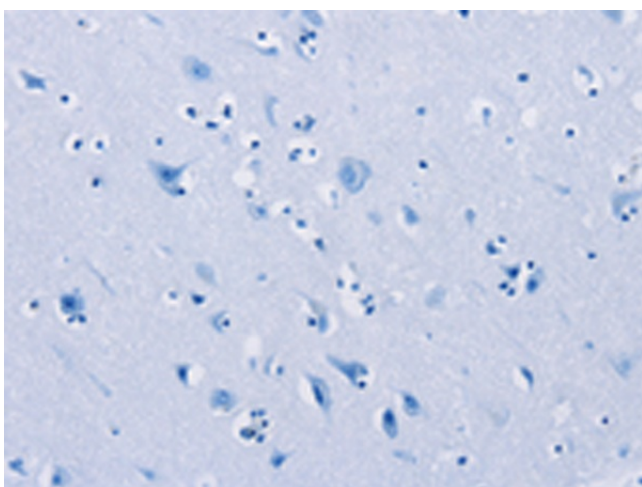
Product Type:	Primary Antibodies
Applications:	IHC
Recommended Dilution:	IHC: 25-100 Positive control: Human brain Predicted cell location: Cytoplasm
Reactivity:	Human, Mouse, Rat
Host:	Rabbit
Isotype:	IgG
Clonality:	Polyclonal
Immunogen:	Fusion protein of human CASC3
Formulation:	pH7.4 PBS, 0.05% NaN <sub>3</sub> , 40% Glycerol
Concentration:	lot specific
Purification:	Antigen affinity purification
Conjugation:	Unconjugated
Storage:	Store at -20°C.
Stability:	1 year
Gene Name:	cancer susceptibility candidate 3
Database Link:	<a href="#">Entrez Gene 22794 Human O15234</a>
Background:	The product of this gene is a core component of the exon junction complex (EJC), a protein complex that is deposited on spliced mRNAs at exon-exon junctions and functions in nonsense-mediated mRNA decay (NMD). The encoded protein binds RNA and interacts with two other EJC core components. It is predominantly located in the cytoplasm, but shuttles into the nucleus where it localizes to nuclear speckles.
Synonyms:	barentsz; BTZ; MLN51; OTTHUMP00000164448



[View online »](#)

**Product images:**

Immunohistochemistry of paraffin-embedded Human brain tissue using TA369019 (CASC3 Antibody) at dilution 1/20 (Original magnification: ×200)



Immunohistochemistry of paraffin-embedded Human brain tissue using TA369019 (CASC3 Antibody) at dilution 1/20, treated with fusion protein. (Original magnification: ×200)