

Product datasheet for **TA369015**

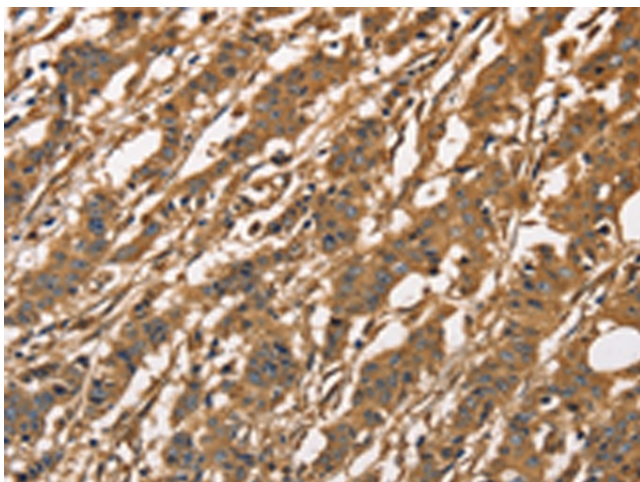
CAPZA3 Rabbit Polyclonal Antibody

Product data:

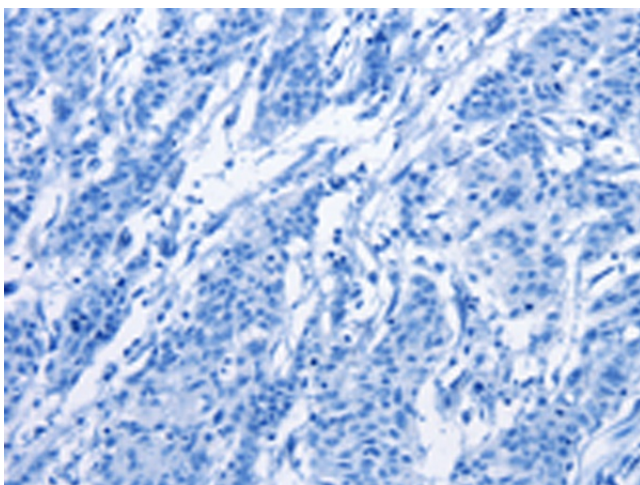
Product Type:	Primary Antibodies
Applications:	IHC
Recommended Dilution:	IHC: 50-200 Positive control: Human gastric cancer Predicted cell location: Cytoplasm
Reactivity:	Human, Mouse, Rat
Host:	Rabbit
Isotype:	IgG
Clonality:	Polyclonal
Immunogen:	Fusion protein of human CAPZA3
Formulation:	pH7.4 PBS, 0.05% NaN ₃ , 40% Glycerol
Concentration:	lot specific
Purification:	Antigen affinity purification
Conjugation:	Unconjugated
Storage:	Store at -20°C.
Stability:	1 year
Gene Name:	capping actin protein of muscle Z-line alpha subunit 3
Database Link:	Entrez Gene 93661 Human Q96KX2
Background:	This gene encodes an actin capping protein, one of the F-actin capping protein alpha subunit family. The encoded protein is predominantly localized to the neck region of ejaculated sperm, other immunohistochemical signals were found in the tail and postacrosomal regions. The encoded protein may also form heterodimers of alpha and beta subunits. This protein may be important in determining sperm architecture and male fertility.
Synonyms:	CAPAA3; CAPP3; CP-alpha-3; Gsg3



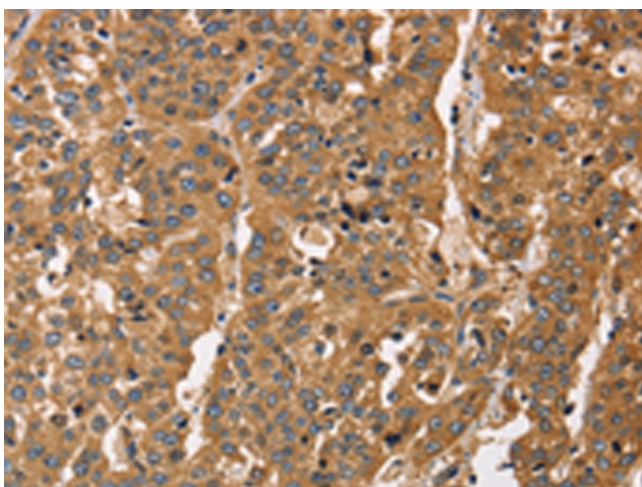
[View online »](#)

Product images:

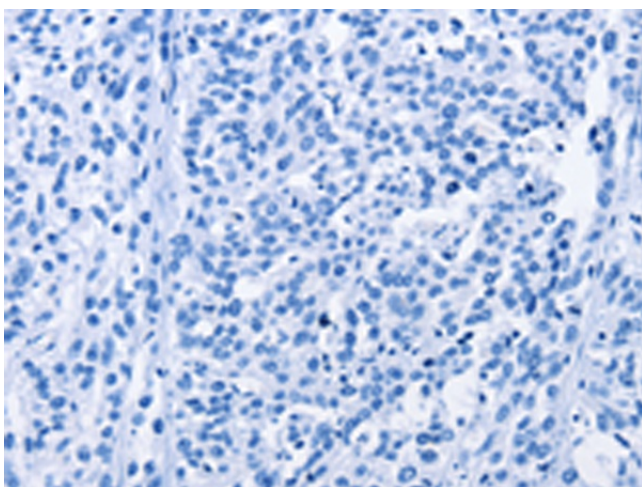
Immunohistochemistry of paraffin-embedded Human gastric cancer tissue using TA369015 (CAPZA3 Antibody) at dilution 1/40 (Original magnification: $\times 200$)



Immunohistochemistry of paraffin-embedded Human gastric cancer tissue using TA369015 (CAPZA3 Antibody) at dilution 1/40, treated with fusion protein. (Original magnification: $\times 200$)



Immunohistochemistry of paraffin-embedded Human esophagus cancer tissue using TA369015 (CAPZA3 Antibody) at dilution 1/40 (Original magnification: $\times 200$)



Immunohistochemistry of paraffin-embedded Human esophagus cancer tissue using TA369015 (CAPZA3 Antibody) at dilution 1/40, treated with fusion protein. (Original magnification: $\times 200$)