

Product datasheet for **TA369012**

Calpastatin (CAST) Rabbit Polyclonal Antibody

Product data:

Product Type:	Primary Antibodies
Applications:	IHC, WB
Recommended Dilution:	WB: 500-2000 WB positive control: Lovo cells IHC: 50-200 Positive control: Human cervical cancer Predicted cell location: Cytoplasm
Reactivity:	Human
Host:	Rabbit
Isotype:	IgG
Clonality:	Polyclonal
Immunogen:	Fusion protein of human CAST
Formulation:	pH7.4 PBS, 0.05% NaN ₃ , 40% Glycerol
Concentration:	lot specific
Purification:	Antigen affinity purification
Conjugation:	Unconjugated
Storage:	Store at -20°C.
Stability:	1 year
Predicted Protein Size:	77 kDa
Gene Name:	calpastatin
Database Link:	Entrez Gene 831 Human P20810



[View online »](#)

Background:

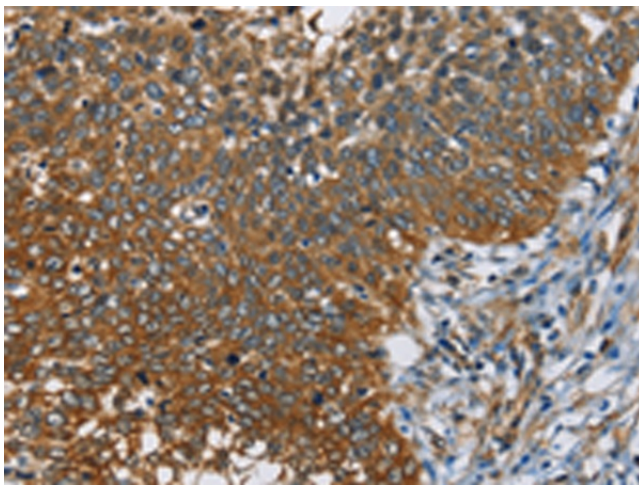
The protein encoded by this gene is an endogenous calpain (calcium-dependent cysteine protease) inhibitor. It consists of an N-terminal domain L and four repetitive calpain-inhibition domains (domains 1-4), and it is involved in the proteolysis of amyloid precursor protein. The calpain/calpastatin system is involved in numerous membrane fusion events, such as neural vesicle exocytosis and platelet and red-cell aggregation. The encoded protein is also thought to affect the expression levels of genes encoding structural or regulatory proteins. Alternatively spliced transcript variants encoding different isoforms have been described.

Synonyms:

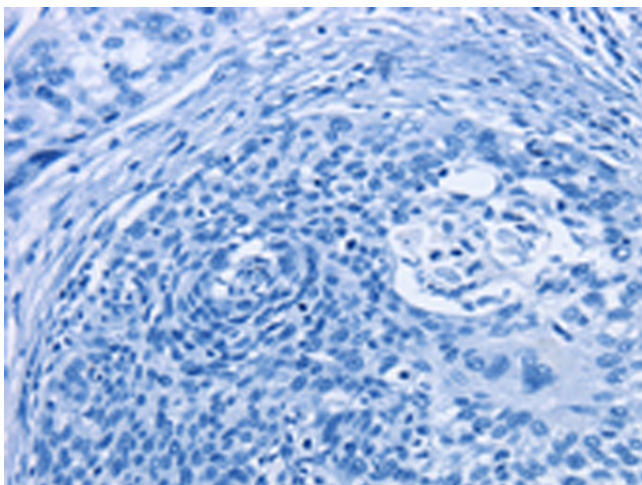
BS-17; calpastatin; MGC9402; OTTHUMP00000158520

Product images:

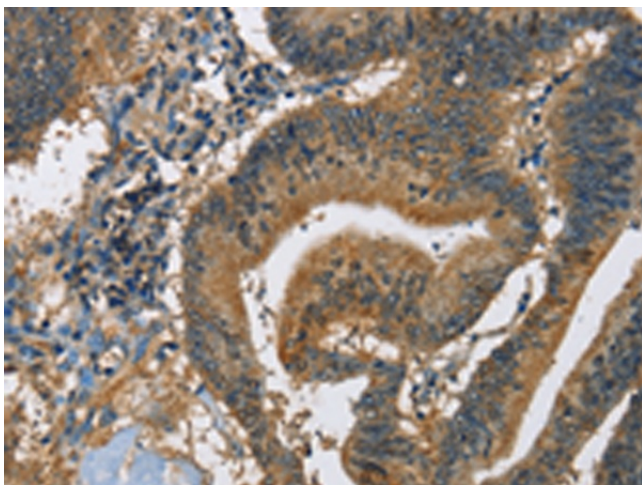

Gel: 8%SDS-PAGE
 Lysate: 40 µg
 Lane: Lovo cells
 Primary antibody: TA369012 (CAST Antibody) at dilution 1/600
 Secondary antibody: Goat anti rabbit IgG at 1/8000 dilution
 Exposure time: 7 seconds



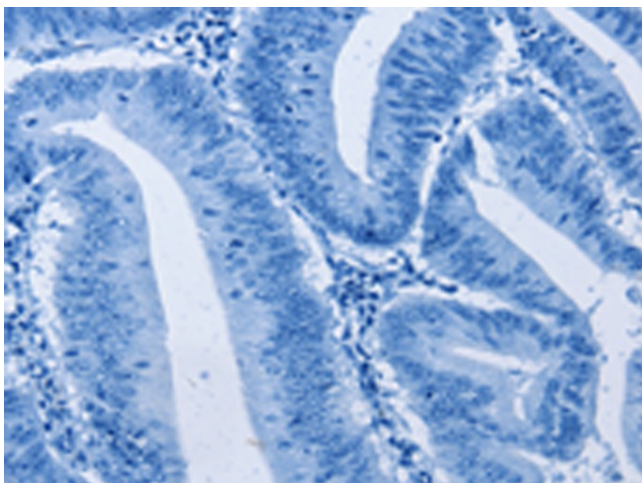
Immunohistochemistry of paraffin-embedded Human cervical cancer tissue using TA369012 (CAST Antibody) at dilution 1/60 (Original magnification: ×200)



Immunohistochemistry of paraffin-embedded Human cervical cancer tissue using TA369012 (CAST Antibody) at dilution 1/60, treated with fusion protein. (Original magnification: ×200)



Immunohistochemistry of paraffin-embedded Human colon cancer tissue using TA369012 (CAST Antibody) at dilution 1/60 (Original magnification: ×200)



Immunohistochemistry of paraffin-embedded Human colon cancer tissue using TA369012 (CAST Antibody) at dilution 1/60, treated with fusion protein. (Original magnification: ×200)